



An initial attempt of edge-
matching and integrating
provincial Biodiversity Plans - first
steps towards a National
Biodiversity Plan.

Dr Boyd Escott¹, Mervyn
Lotter² and Nacel Colins³

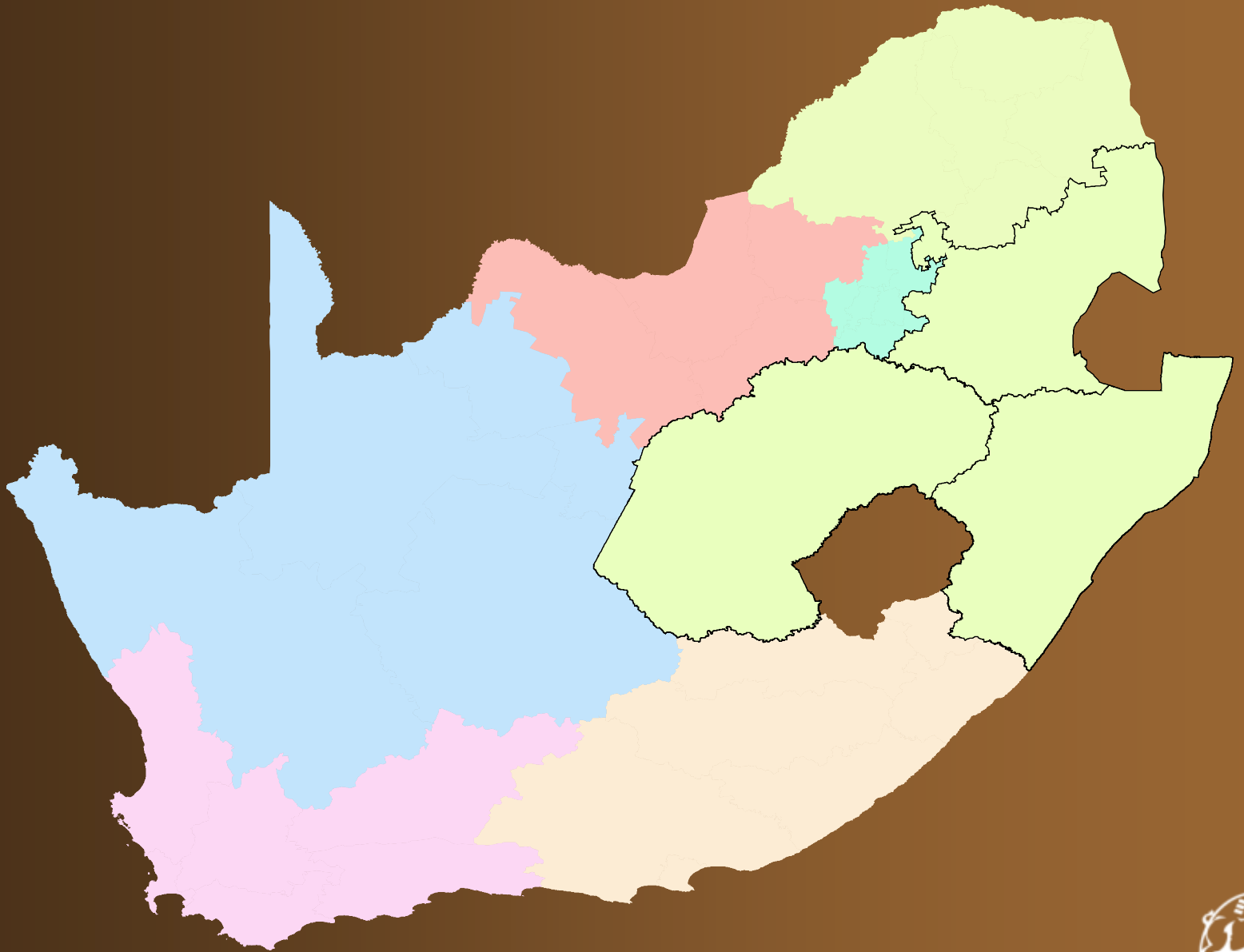
¹EKZNW KZN Wildlife

²MTPA

³FS DETEA

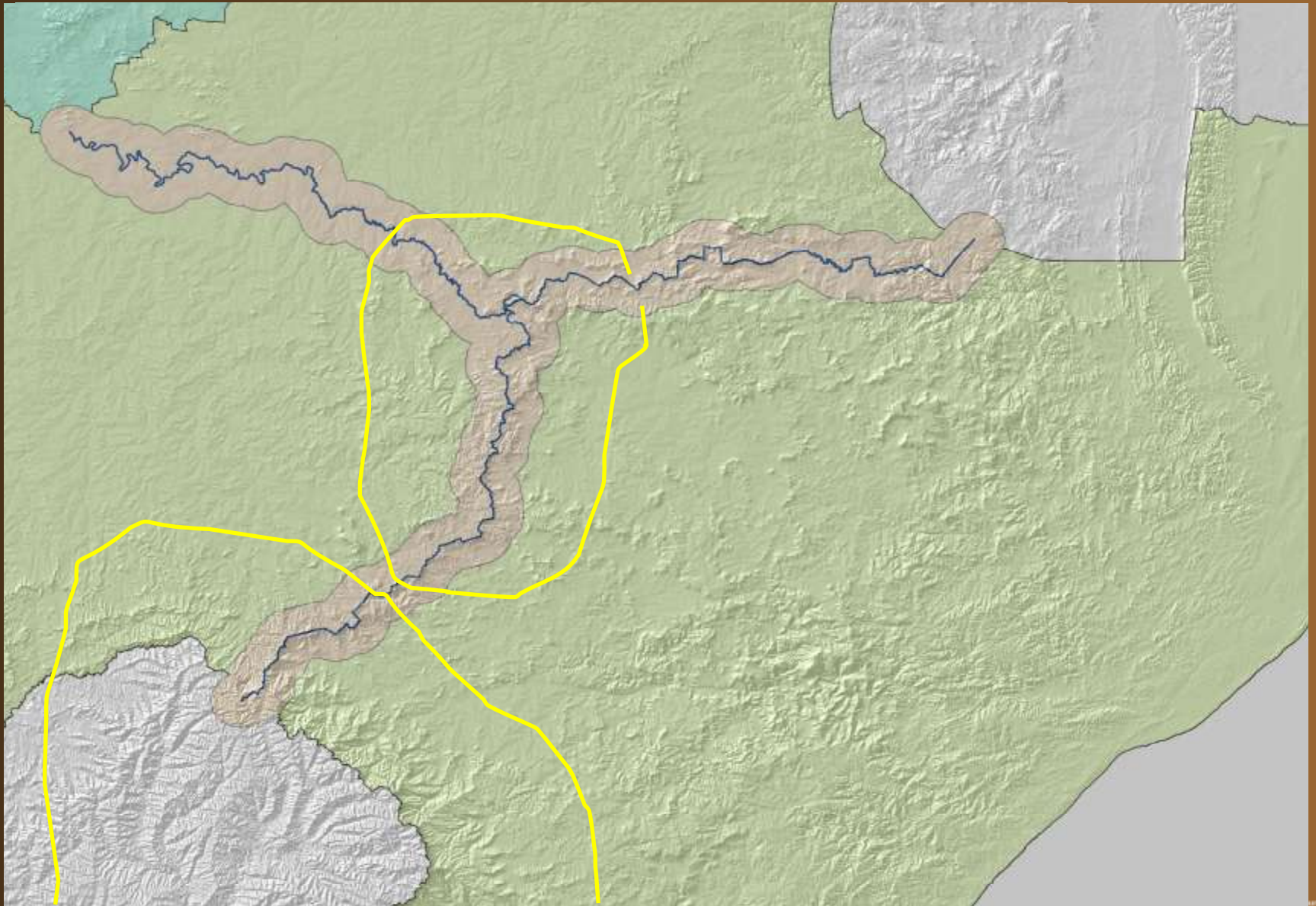


Conservation, Partnerships & Education



EZEMVELO
KZN WILDLIFE

Conservation, Partnerships & Education



General process followed

- Fine scale data
 - Buffered the common boundary by 10 km
 - Determine common species
 - Share all data points – compile single master dataset
 - Establish a standard set of buffer distances – case specific
 - Synchronise target setting.
 - Build in Irreplaceable areas
- Macro scale: Edge match corridors



Standardisation summary

- Looked at:
 - 12 bird species
 - 3 mammal species
- Multiple invertebrate species. All addressed by 500m buffer around the CR, EN & VU taxa (high status), otherwise select only the Planning Units (intersected with point data) for the other taxa of lower conservation value.
- Assign target of 100% to CR and EN status, 75% for VU status, and 50% for all else (if included)

Example of standardisation

- Birds

- Wattled Crane (CR): Current nest, 2km buffer with 100% target. Historic nests, 1.5km with 75% target. KZN will change their buffers to reflect this.
- Blue Crane (VU): Current, 1km buffer & 100% target; historic 1km buffer, 75% target. KZN will change their buffers to reflect this. MP to increase targets.
- Grey Crowned Crane (EN): Current 1km buffer & 100% target; historic 1km buffer, 75% target. MP to increase buffer on Grey crowned crane to 1 km.
- Southern Bald Ibis (VU): 1 km buffer, 80% target. KZN will change their targets to reflect this. Update bald ibis target to 80% based on status.

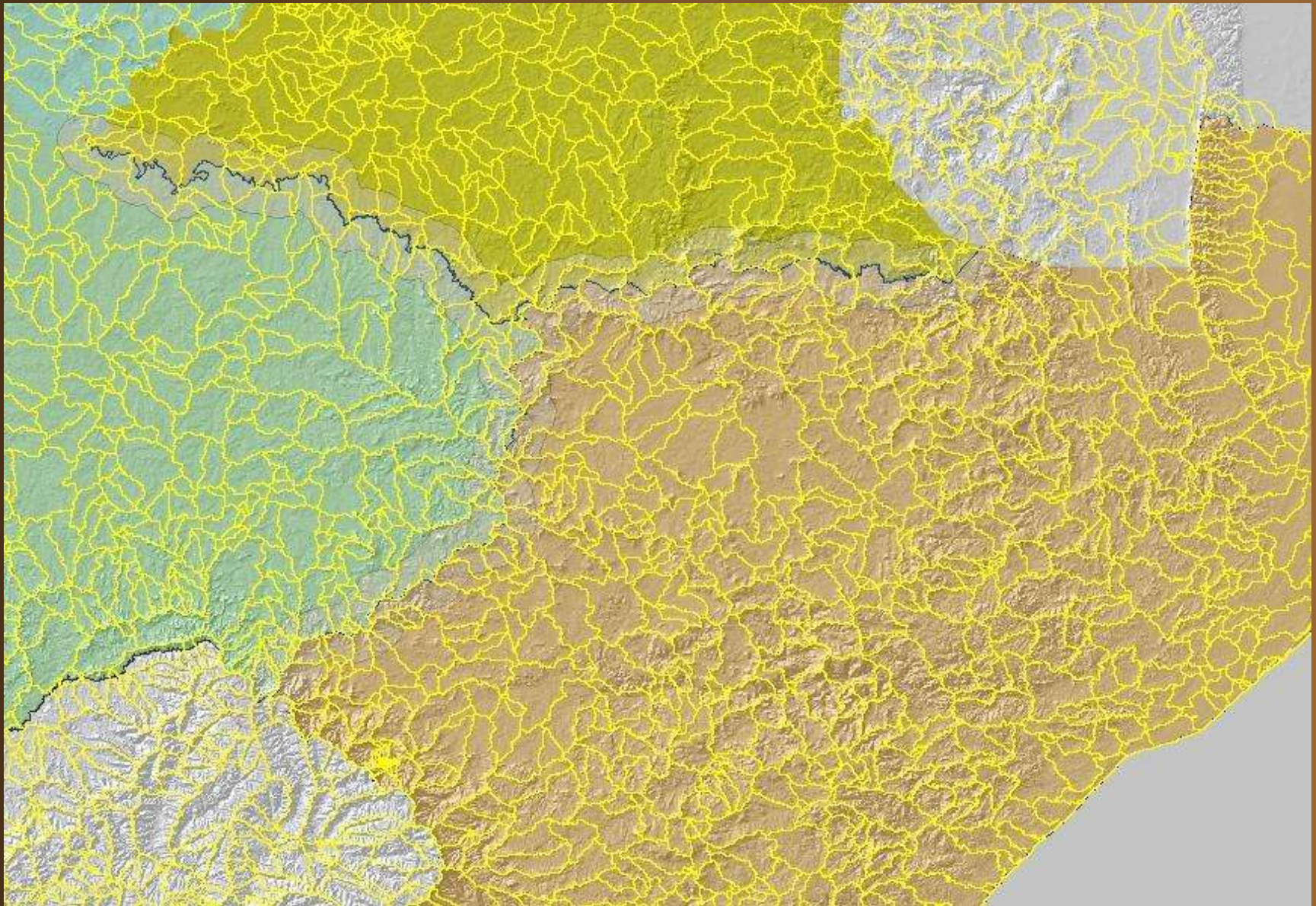


General principle

- For features with less than 5 Planning Unit locations within a Province (could include multiple points in one Planning unit), the target must always be 100%.
- If the combined dataset for multiple provinces is equal to and less than 10 Planning Unit locations, the target must be 100% for all provinces.
- In the cases where the above two rules do not apply, then assign targets according to the status criteria: Cr & EN = 100%, VU = 75%, NT & DD = 50%.



Nest Planning units in NFEPA Catchments



Key issues to consider

- How to address proportional target sharing across political boundaries
- Need to standardise minimum resolution requirements for data
- Related to above, need to standardise maximum planning unit size (100ha?)



Thank you. Comments and questions most welcome.



EZEMVELO
KZN WILDLIFE

Conservation, Partnerships & Rehabilitation