









Mpumalanga Land Reform Biodiversity Stewardship Update-2015

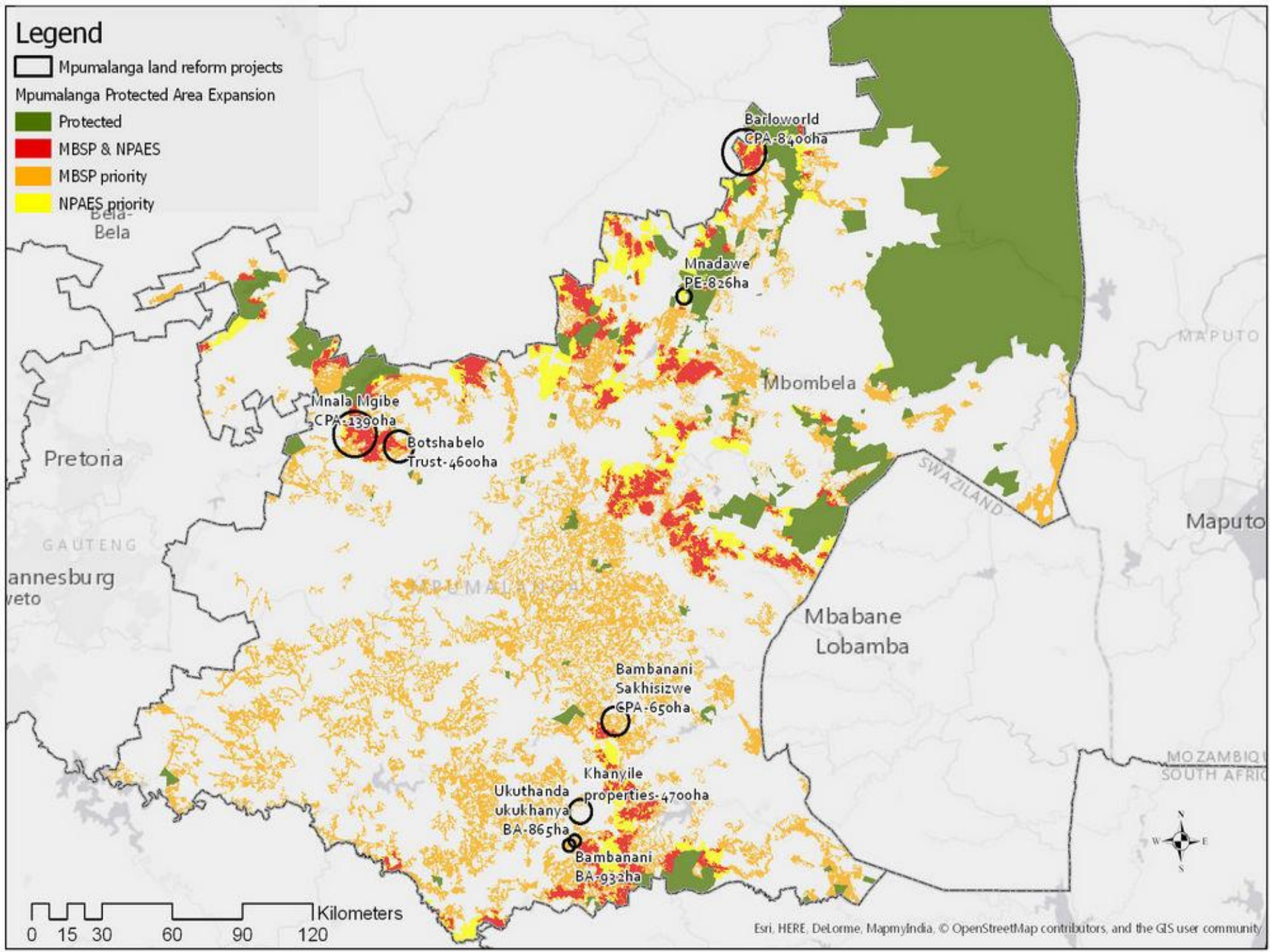
Nomcebo Kunene
Mpumalanga Biodiversity Stewardship
013 759 5361/082 322 8515
nomcebo@mtpa.co.za

LAND REFORM PROJECTS

- Mndawe Community Trust Protected Environment-Lydenburg, 826 ha
- Manala Mgibe CPA proposed Protected Environment-Witbank, 13 920 ha
- Khanyile Properties proposed Protected Environment-Amersfoort, 4 700 ha
- Ukuthanda ukukhanya CPA Biodiversity Agreement-Wakkerstroom (Bethumoya), 865 ha
- Bambanani CPA Biodiversity Agreement-Wakkerstroom (Bethumoya), 932 ha
- Bambanani Sakhisizwe CPA proposed Protected Environment-Sheepmoor, 650 ha
- Barloworld CPA proposed Protected Environment-Vaalhoek
- Botshabelo – put on hold for now due to internal conflicts amongst members

Legend

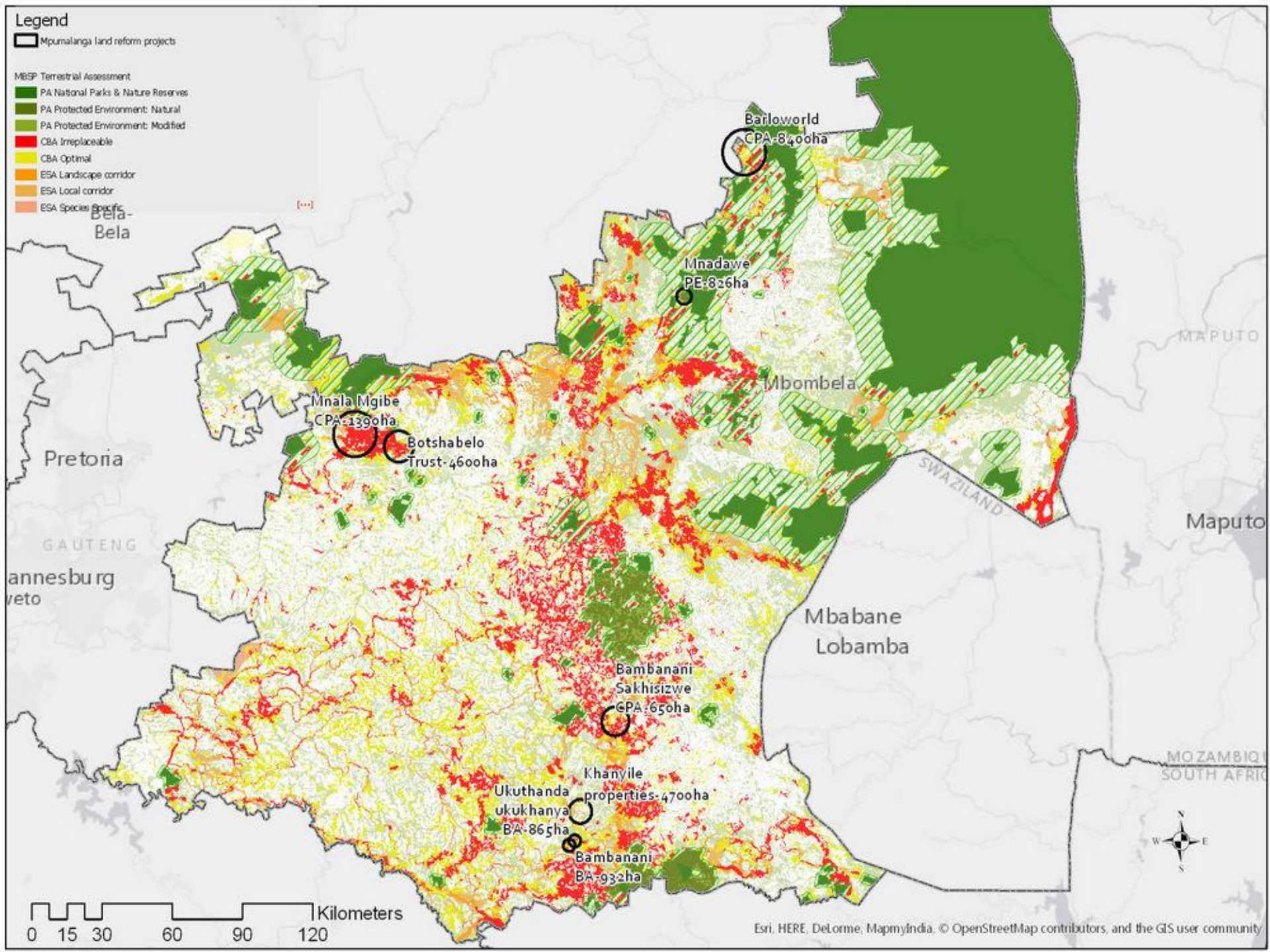
-  Mpumalanga land reform projects
-  Mpumalanga Protected Area Expansion
-  Protected
-  MBSP & NPAES
-  MBSP priority
-  NPAES priority



0 15 30 60 90 120 Kilometers

Legend
 Mpumalanga land reform projects

- MESP Terrestrial Assessment
- PA National Parks & Nature Reserves
 - PA Protected Environment: Natural
 - PA Protected Environment: Modified
 - CBA Irreplaceable
 - CBA Optimal
 - ESA Landscape corridor
 - ESA Local corridor
 - ESA Species Specific



PROGRESS TO DATE IN PROJECTS

PROJECT	STATUS
Mndawe Trust PE	<ul style="list-style-type: none">-Declared PE in 2014-Process of Developing Management Plan-Established Task Team comprising of MTPA/LED /Mentors/DRDLR/Landowners
Bambanani and Ukuthanda ukukhanya CPA's	<ul style="list-style-type: none">-Partnered with WWf-SA-Signed Biodiversity Agreements in 2013-Launched in 2014-Established a Task Team comprising of various role players-Developed a Management Plan-Working with WWF-SA towards getting the beneficiaries trained in Alien Plant Clearing/Fire Management
Khanyile Properties	<ul style="list-style-type: none">-Partnered with WWF-SA-Black Commercial Farmer-Properties assessed/Allocated category/Notification letter forwarded-Requested further clarification on allocated category-Taking time to respond

PROGRESS TO DATE IN PROJECTS cont.....

PROJECT	STATUS
Manala Mgibe CPA	<ul style="list-style-type: none">-Started working in 2009, assessments done-Delayed to get Community Resolution due to internal fights in leadership-Started again in 2013 and assessments were done in 2014-Category of PE allocated, community resolution received-Submissions on Intent to declare prepared-Gazette and Declare in 2015
Bambanani Sakhisizwe CPA	<ul style="list-style-type: none">-Partnered with EWT-Started working in 2013, assessments done-Category of PE allocated, notification not sent out-Recommendation from PAEC to declare a bigger PE (privately and communally owned)-Outstanding properties in privately owned areas still to be assessed-Gazette and Declare in 2015
Barloworld CPA	<ul style="list-style-type: none">-Comprises of 3 CPA's = complex community dynamics-Mediator appointed by DRDLR-Assessment done in 2014-GEF funding available for land under better management-Training for beneficiaries in sustainable land use management

SUCCESSSES

- Gaining of trust and willingness from landowners,
- Partnership development with other organizations to work collectively towards conservation of natural resources

CHALLENGES

- Ensuring support from GOVT departments, DARDLA & DRDLR, local municipalities etc.
- Realignment of functions & slow progress towards release of grants through the RECAP programme.
- Community fear about restrictions and limitations e.g. cattle stock
- Lack of capacity building programmes from govt dept's
- Mining v/s Conservation= job creation
- Lack of funding-partner with DEA-NRM
- Internal conflicts amongst members
- Limited tangible incentives



THANK YOU