

Lilium formosanum

SANBI's contribution to containing its spread in
KwaZulu-Natal.

Futhi Mthimkhulu and Ingrid Nänni

Invasive Species Programme



SANBI: ISP mandate

- ▶ Facilitate eradication of NEMBA category 1a species if investigations show this is possible and desirable
- ▶ Assess all (~93 taxa) species on Surveillance List
 - Co-ordinate surveillance of new instances of naturalisation and manage records
- ▶ Advisory role for national management strategies for species that have been worked on, and on taxa not yet introduced.
- ▶ Build capacity (Research and Implementation)

Species background

- ▶ Liliaceae native to Taiwan
- ▶ Invasive in RSA in vulnerable and endangered habitats, i.e. Grasslands and Savanna
- ▶ Also invasive in Australia (E Australia, Lord Howe Island, Norfolk Island) and Japan
- ▶ very little action has been taken anywhere to mitigate its impacts
- ▶ some info on ecological impact – negative on biodiversity
- ▶ no info on economic impact – potentially considerable
- ▶ Large seed production dispersed by wind



Management history in SA



- ▶ NEMBA category 1b (not an eradication target)
- ▶ 2007 KZN DAEA:RD initiated clearing Formosa lily
- ▶ 2010 SANBI ISP:EDRR was asked by WFW to continue containment efforts in KZN
- ▶ 2010 SANBI appointed 6 mobile teams to clear Formosa lily, amongst other species
- ▶ 2011– 2013 SANBI appointed 7 mobile teams each year to include Formosa lily in their work schedule

Resources



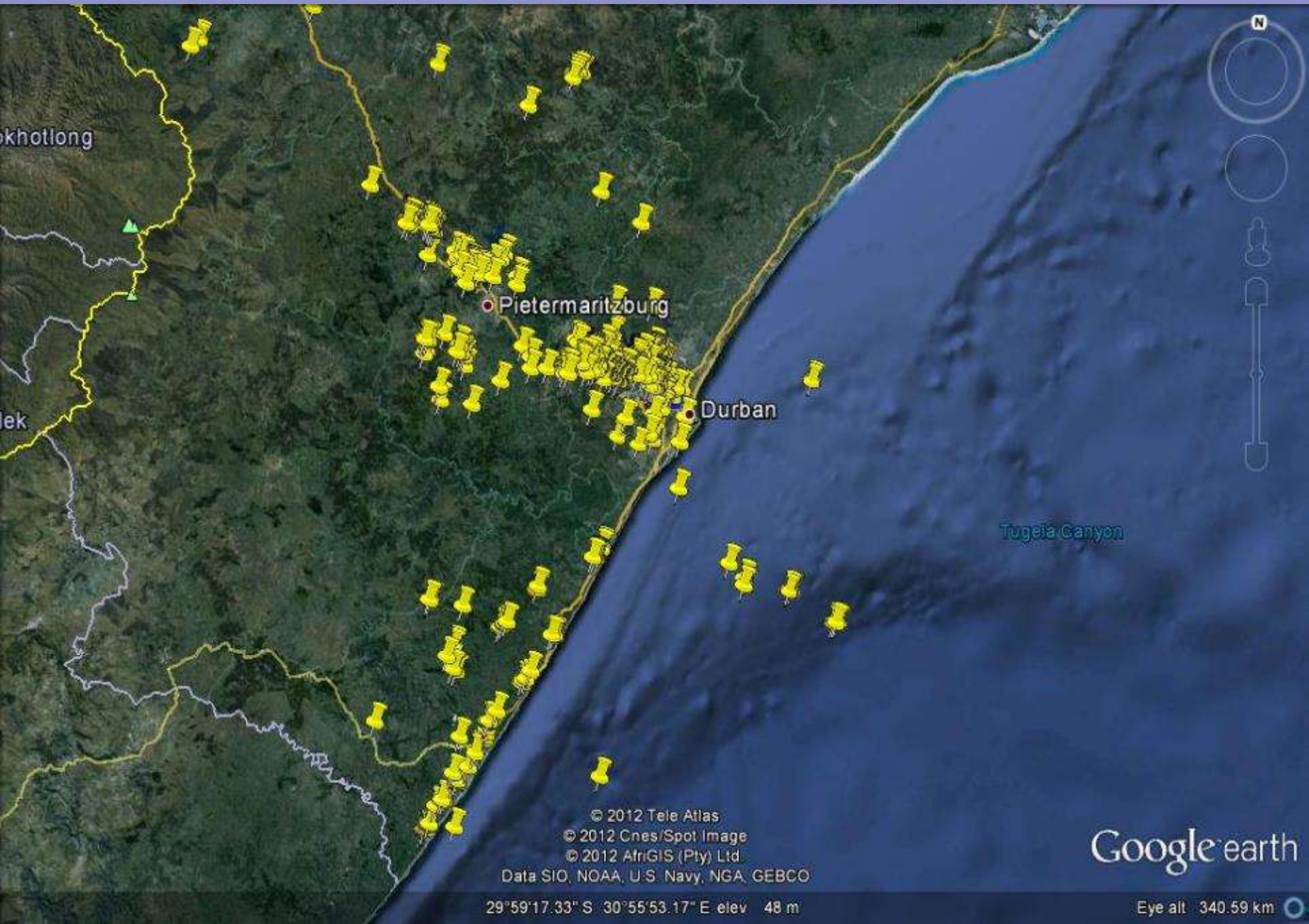
Clearing costs in KZN is ca. R2.7million for 2013/2014, including labour, herbicides and management

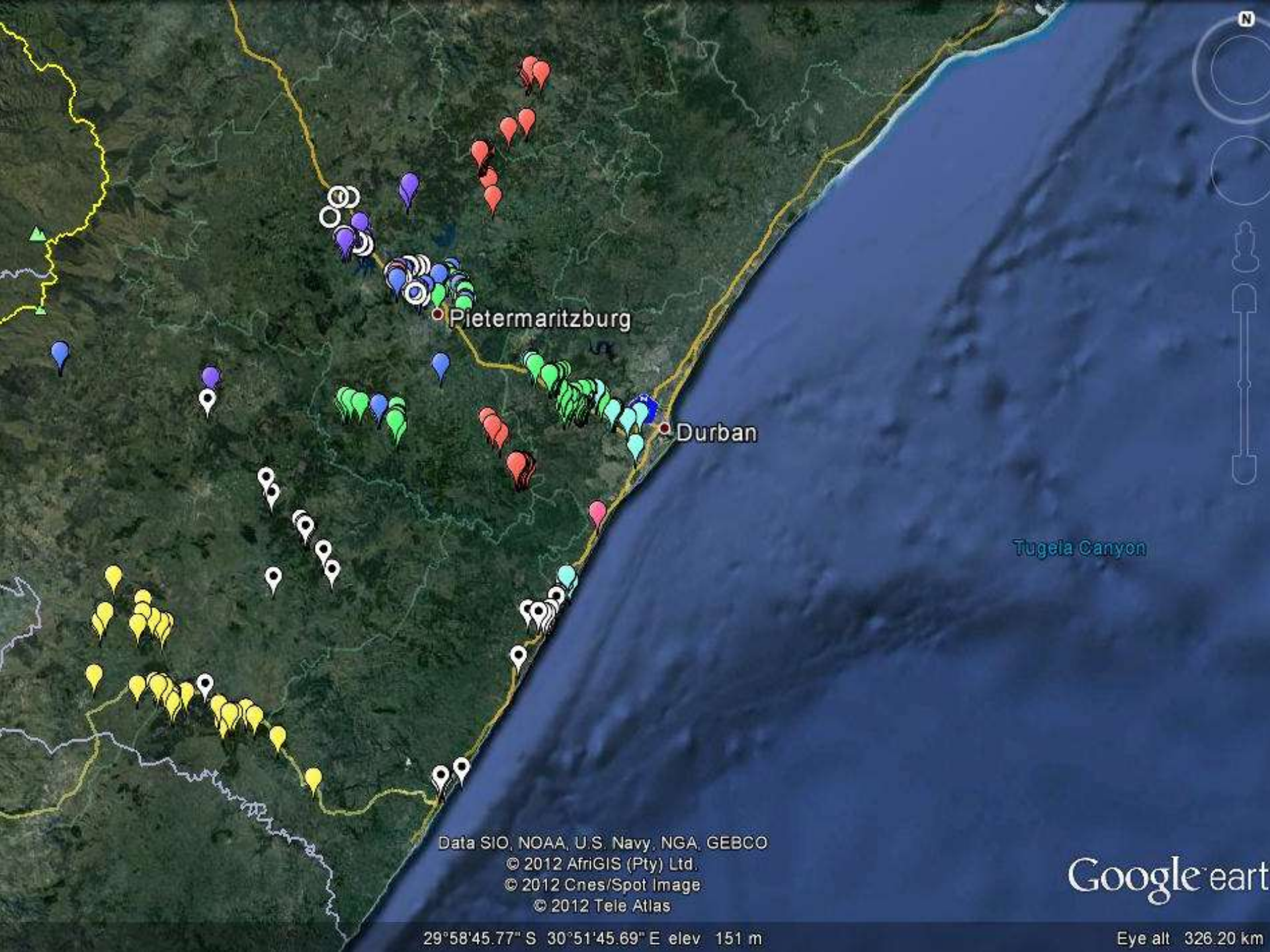


Control methods

- ❖ Controlled using herbicides
- ❖ Cutting flowers,
- ❖ Putting them in strong plastics
- ❖ Transporting them to burning sites where they are burnt
- ❖ Data collection using CyberTracker

Formosa lily locality data from previous years





Pietermaritzburg

Durban

Tugela Canyon

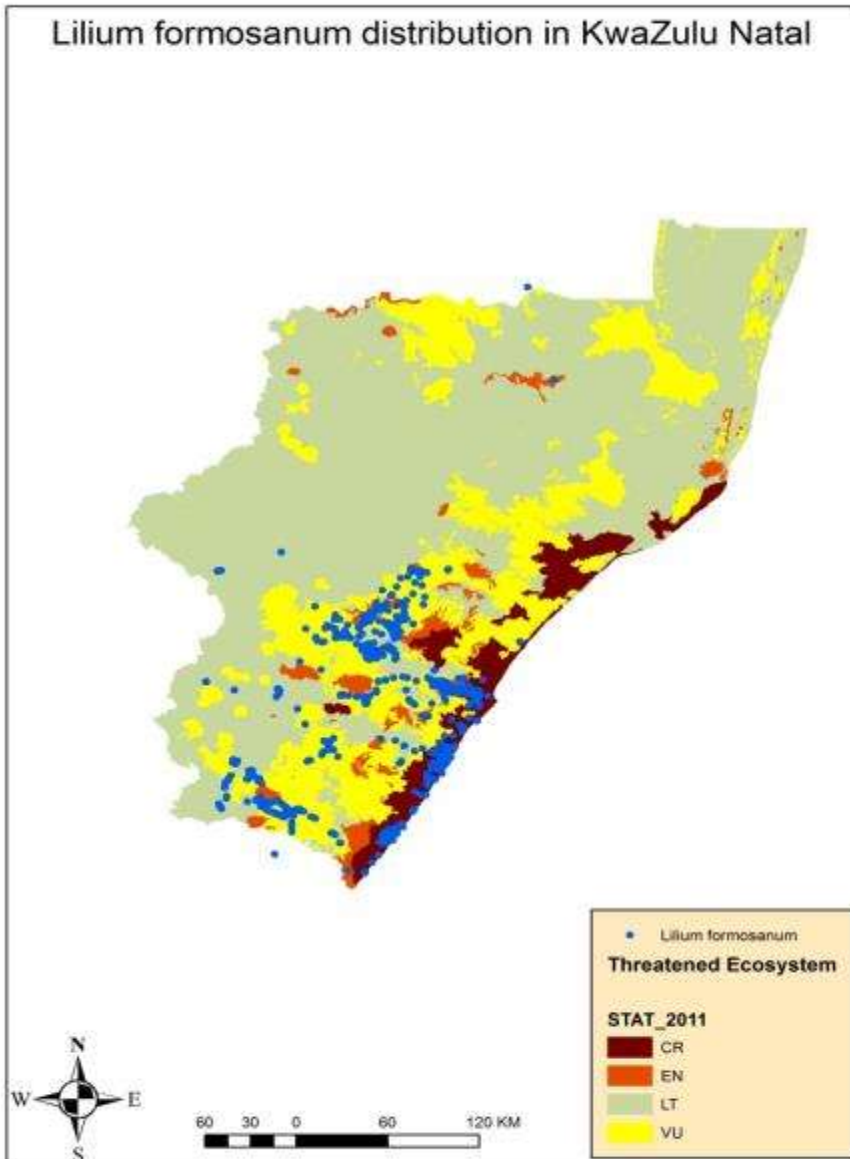
Data SIO, NOAA, U.S. Navy, NGA, GEBCO
© 2012 Afrigis (Pty) Ltd.
© 2012 Cnes/Spot Image
© 2012 Tele Atlas

Google earth

29°58'45.77" S 30°51'45.69" E elev 151 m

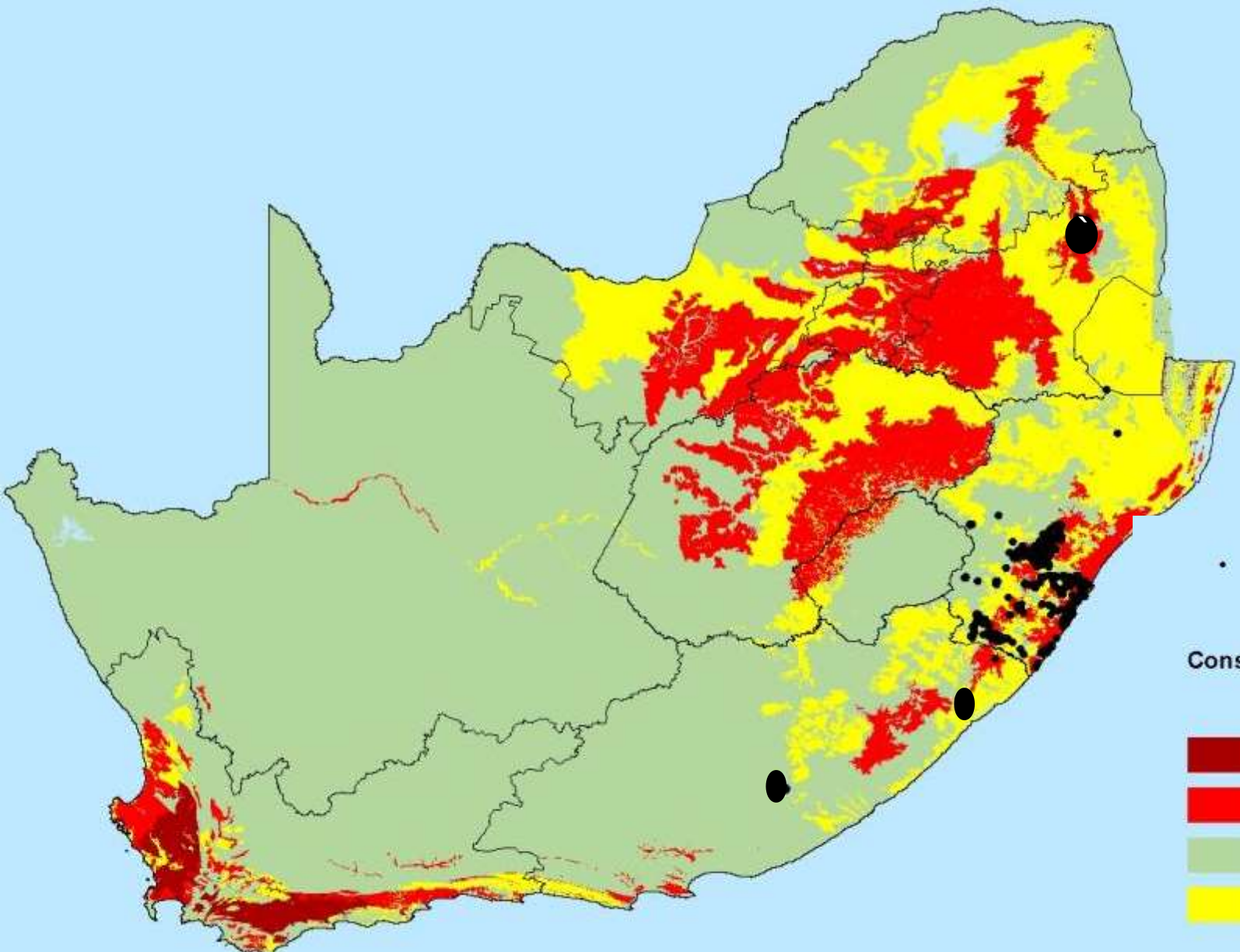
Eye alt 326.20 km

Formosa lily distribution in KZN



- ▶ About 16000 ha of KZN under clearing and surveillance

National distribution



• Formosa Distribution

Conservation Status

- Critically endangered
- Endangered
- Least threatened
- Vulnerable

Challenges

- ▶ Method of work different from general WfW clearing work.
- ▶ Landowner agreements

Going forward

- ▶ Handing over.....??????????
- ▶ Developing a national strategy



NGIYABONGA

n.mthimkhulu@sanbi.org.za