

Progress with the development of the new Protected Areas Register

Biodiversity Forum, May 2014



Biodiversity and Conservation



environmental affairs

Department:
Environmental Affairs
REPUBLIC OF SOUTH AFRICA



National Environmental Management: Protected Area Act, 2004

Sec 10. Register of Protected Areas

- (1) The Minister must maintain a register called the Register of Protected Areas.
- (2) The Register must-
 - (a) contain a list of all protected areas;
 - (b) indicate the kind of protected area in each case; and
 - (c) contain any other information determined by the Minister.
- (3) For the purposes of subsection (2)(b) a protected area declared in terms of provincial legislation must be included in the Register as a nature reserve or protected environment depending on the purpose for which it was declared.
- (4) The Cabinet member responsible for the administration of the National Forests Act, 1998 (Act No. 84 of 1998), and the MEC must notify the Minister of all areas declared as protected areas in terms of that Act or provincial legislation, as the case may be.



environmental affairs

Department:
Environmental Affairs
REPUBLIC OF SOUTH AFRICA



HISTORY OF OLD PA REGISTER

- **NEM:PAA came into force** - **1 Nov 2004**
- **Start development of Register** - **Jan 05**
- **Questionnaires to HOD's/Dept's** - **28 Feb 05**
- **Presentation to WG1** - **17 Feb 06**
- **MINTECH Approved** - **4 July 06**
- **Register functional** - **11 Oct 06**
- **PA Register link published** - **07 Nov 2007**



environmental affairs

Department:
Environmental Affairs
REPUBLIC OF SOUTH AFRICA





 **GOOD DAY**

DEAT is continually improving its information service. This Web-based application has been developed to enable the stakeholders in the Protected Areas of South Africa to capture both the attribute and spatial information relating to such Protected Areas that fall within their management authority.

The Web application is linked directly to a central database at Head Office. This makes the information immediately available to decision makers in the form of customised reports that are generated "on the fly". DEAT Protected Areas Register uses a TAB format for functionality options and should be easy to master (training will also be given). The reporting functionality is now available and reports will be continually upgraded.

 **BULLETIN BOARD**

Now available!!



[Online Help](#)



[Click on the image to log on](#)

[Or click here for public access](#)

If you have any problems logging on, please contact [Kallie Naude](#)

Web services powered by ESRI's ArcIMS Internet technology

Website Developed by:



Website best viewed at **1024 x 768**
Last updated on 25 April 2006

<http://gis.deat.gov.za/paregister>

DISCLAIMER: This web site contains information of a general nature which is not warranted for accuracy. The copyright in the content of this web site vests in DEAT. Please send your comments or suggestions on this site to the webmaster

New Register 2013/14

- Certify protected area database by STATS SA additions to national parks
- Monitor provincial declarations – update database
- Re-develop the Register on Protected Areas to include conservation areas
- Verify privately owned protected areas
- Develop Norms and Standards for inclusion of private land into Conservation Areas

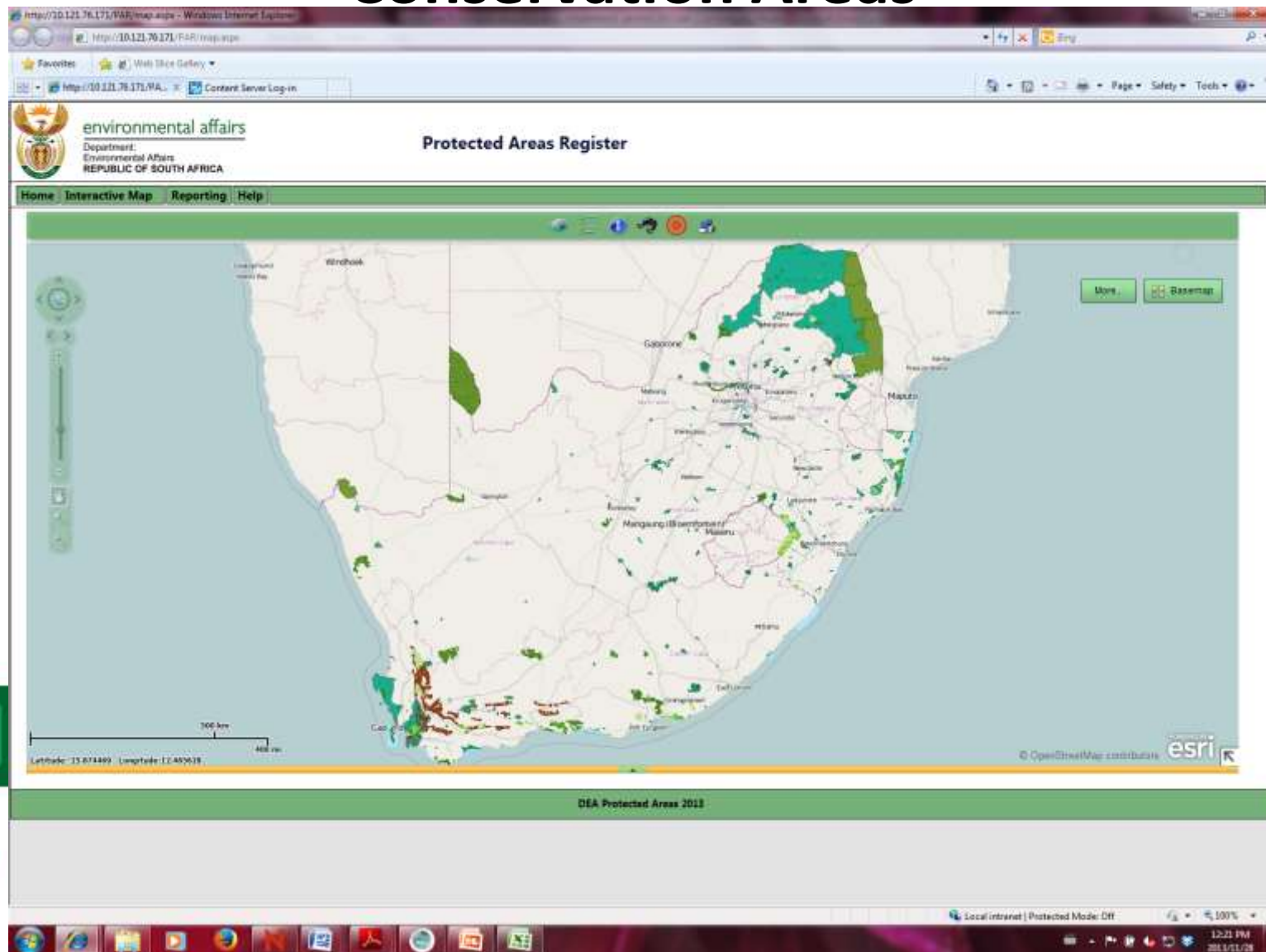


environmental affairs

Department:
Environmental Affairs
REPUBLIC OF SOUTH AFRICA

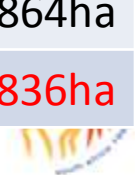
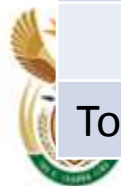


New National Register of Protected and Conservation Areas



Kinds of Protected Areas, NEMPAA, 2004

Number	Kinds of PA's	Hectares
02	Special Nature Reserves	33 618ha
21	National Parks	3 776 676ha
±379	Nature Reserves	1 702 918ha
08	World Heritage Sites,	2 027 393ha
46	Forest Nature Reserves	177 137ha
12	Forest Wilderness Areas	274 489ha
29	Marine Protected Areas	440 425ha
±1133	Privately Owned Nature Reserves	1 784 063ha
16	Mountain Catchments Areas	627 258ha
05	Protected Environment	126 864ha
Total		10 970 836ha



Conservation areas

SA also has other conservation areas (not declared) –

- Game reserves,
- Game parks,
- Biosphere reserves (Buffer and transitional areas)
- Private nature reserves (not declared),
- Stewardship programme – biodiversity agreements, and
- 6 Transfrontier conservation areas (areas not declared)
- Ramsar sites – outside pa's



environmental affairs

Department:
Environmental Affairs
REPUBLIC OF SOUTH AFRICA



Verify Private Nature Reserves

- Consultant process underway to verify
- Project to be completed in Dec 2014
- Progress to date
 - **KZN – completed**
 - **North West- completed**
 - **ECape – completed**
 - **NCape – completed**
 - **WCape - completed**
 - **Mpumalanga – completed**
 - **Limpopo – completed**
 - **Gauteng – 15%**
 - **Free State - 5%**
- **Final verification process to confirm land use to be completed in 2015**

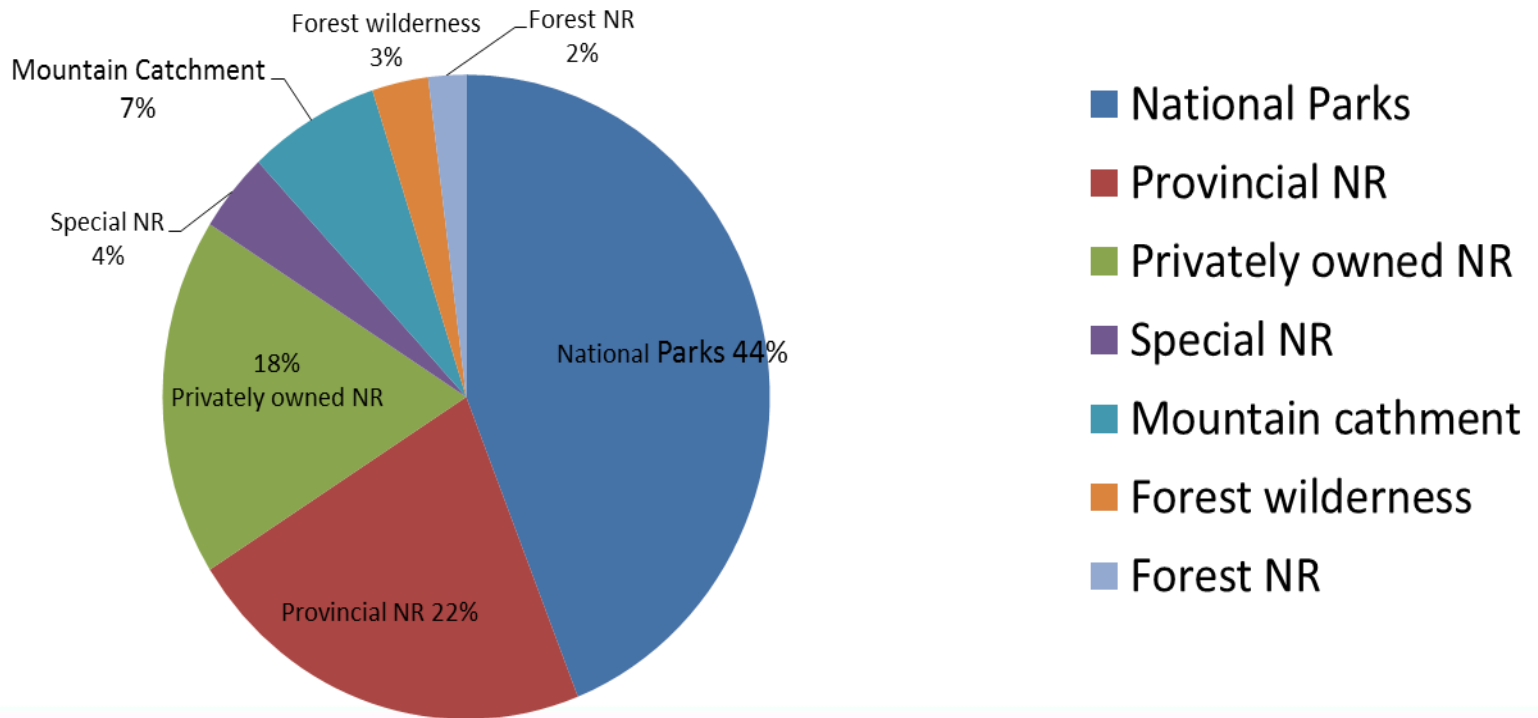


environmental affairs

Department:
Environmental Affairs
REPUBLIC OF SOUTH AFRICA



Kinds of protected area estate



environmental affairs

Department:
Environmental Affairs
REPUBLIC OF SOUTH AFRICA



Declared NPs 2013-2014

	Area	Size (ha)
1	Addo	135.89
2	Namaqua	9 868.15
3	Tankwa	14 258.16
4	Camdeboo	4 489.68
5	Karoo	10 917.27
6	Mountain Zebra	3 236.14
7	Table Mountain	1 064.47
8	West Coast	3 361.74
	Total	47 331.50



environmental affairs

Department:
Environmental Affairs
REPUBLIC OF SOUTH AFRICA



Provincial declarations

	Declared	Area (ha)	Int to declare	Area (ha)
E Cape	1x NR	40 605	2x NR	1 902
Limpopo	5x NR	51 403	5x NR	73 865
Mpumalanga	1x NR	4 700	1X NR	826
W Cape	4x NR	1 848	29x NR	36 080
Gauteng			11x NR	20 842
North-West			5x NR	35 143
TOTALS	11x NR	98 556	53x NR	168 658
Mpumalanga			4x PE	78 248
W Cape			2x PE	4 718
TOTALS			6xPE	88 510

Declarations 2012/13

Type	Number	Area (ha)
National parks	Adds to 8 NP	47 331.50
Nature reserves	11x NR	98 556.00
Marine protected areas (O&C)	1x MPA	

Intentions to declare

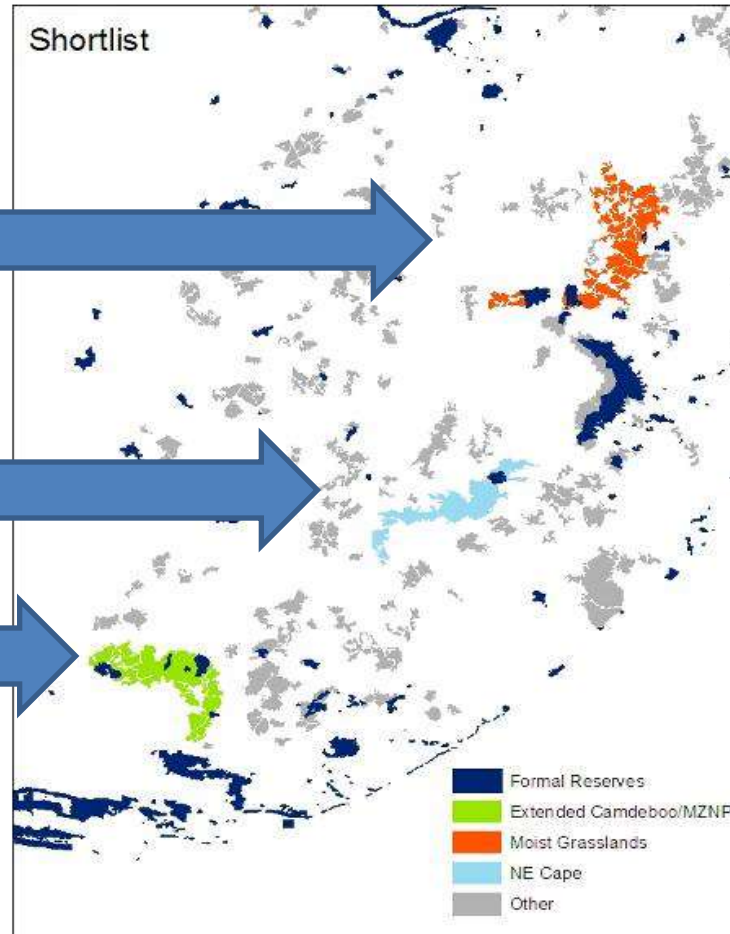
Type	Number	Area (ha)
National parks	Adds to 8x NP	38 792
Nature reserves	53x NR	168 658
Protected environments - national	2x PE	316 710
Protected environments - provincial	6xPE	88 510
Marine protected areas (O&C)	4?	

Grassland Protected area expansion

MTPA, FS to focus their expansion

Feasibility study was conducted in 2011

SANParks has initiated the process



environmental affairs

Department:
Environmental Affairs
REPUBLIC OF SOUTH AFRICA



Develop Norms and standards for inclusion of private land into conservation areas

- Literature review completed
- Process started with draft development
- Consultations private owners 2014/15
- Target date for completion 2015



environmental affairs

Department:
Environmental Affairs
REPUBLIC OF SOUTH AFRICA



Where are we now ?

- Current status: 7.8% of SA protected areas
- Combined with conservation estate - in register = 13 013 758ha = **10.67% of SA**



environmental affairs

Department:
Environmental Affairs
REPUBLIC OF SOUTH AFRICA





Thank You



environmental affairs

Department:
Environmental Affairs
REPUBLIC OF SOUTH AFRICA

