



2014 Biodiversity Planning Forum
13–16 May, Mpekweni Beach Resort, Eastern Cape

Technical guidelines for developing a bioregional plan outline

Fahiema Daniels and Amanda Driver
f.Daniels@sanbi.org.za



Background

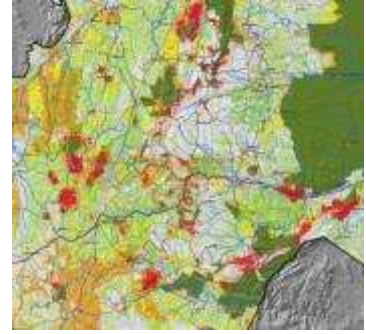
- Gazetted Bioregional plans in NEMBA
- “Guideline regarding the Determination of Bioregions and the Preparation and Publications of Bioregional Plans “ published in 2009
- Need for the development of a tool kit
- Provincial planning forums held in 2012 and 2013



Outline of the guideline

- Background
- Overview of data inputs
- Setting targets
- Analysis
- Adjacency and edge matching
- Ecological condition data
- Mapping and GIS technical guidelines
- Including Ecological Infrastructure in biodiversity planning?

Background



- Introduction
- Rationale for developing technical guidelines
- Scope
- Relationship between the document and other guidelines



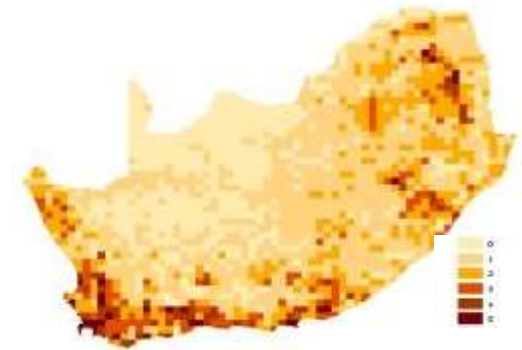
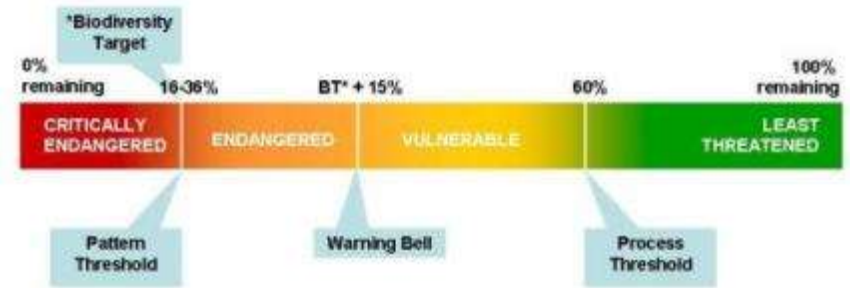
Overview of data inputs

- Biodiversity features
- Ecological condition/ pressures
 - Habitat modification layer
 - Present ecological state for rivers



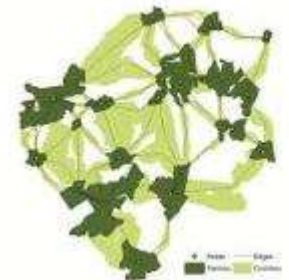
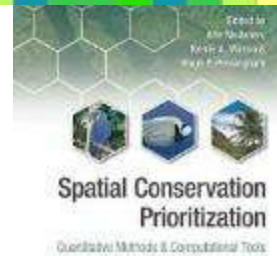
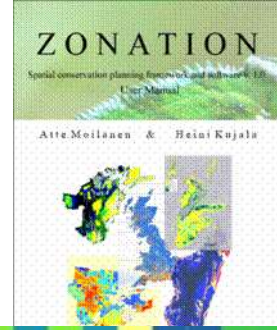
Setting targets

- Targets for ecosystems
- Targets for species
 - Using point locality data
 - Criteria for inclusion
- Targets for ecological corridors
 - Approaches for setting targets
 - Minimum set of process features to be included



Analysis

- Recommendation on software?
- Essential characteristics of a systematic biodiversity planning approach
- Criteria for CBAs and ESAs
- Identifying corridors
 - Methodology for identifying corridors
 - Key features for connectivity
 - Identifying critical linkages



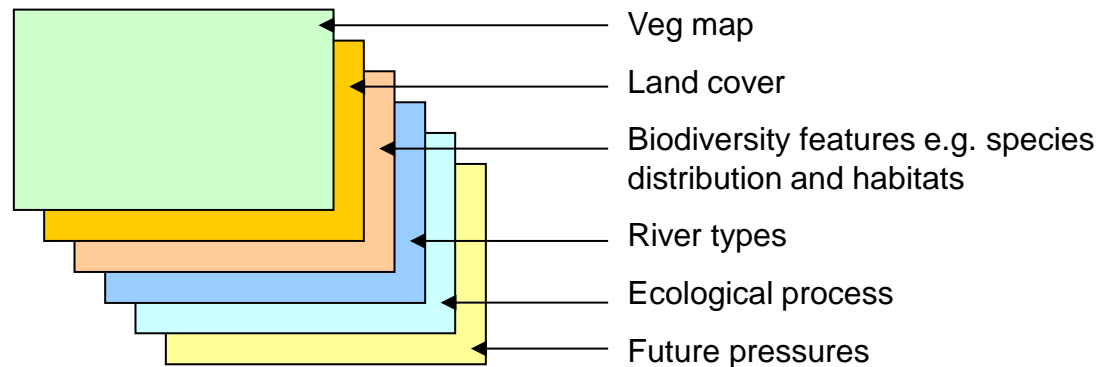
Adjacency and edge matching

- Incorporation of national scale data
- Specific features to hardwire in as CBAs
- Cost layer recommendations
- Sensitivity analysis and analysis of targets met
- Standardisation of buffers for CBA identification
 - Buffers for protected areas, roads, rivers and wetlands
 - Any other buffers?



Ecological condition data

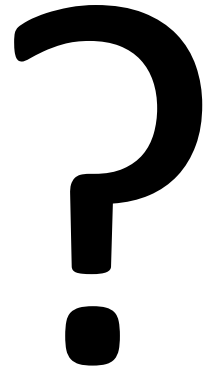
- Ecological condition classes
- Ideally on good fair poor/ abcdef
- Data requirements
- Ecological condition and CBA categories
- Anything else?



Mapping and GIS technical guidelines

- Overlapping biodiversity planning criteria
 - Presenting protected areas on the map
 - Presenting PE's on the map
- Mandatory attribute data
- Maps/colours/ standards for maps for bioregional plans
- Typology requirements recommendations
 - Overlapping polygons

Including Ecological Infrastructure in biodiversity planning



Thank you

