



2014 Biodiversity Planning Forum

13–16 May, Mpekweni Beach Resort, Eastern Cape

HABITAT MODIFICATION LAYER

BY
SMISO BHENGU

Introduction

- There is high demand for data on land cover at a national level:
 - ❖ NFEPA project
 - ❖ Listing of threatened ecosystem
 - ❖ Millennium Development Goals report
- Unfortunately National Land Cover layer is unlikely to be updated before next NBA



Introduction (cont)

- Provincial and metro biodiversity planning work session (Nov 2013)
 - Need for layer depicting Habitat modification
 - Technical working group nominated
 - Met in Dec 2013 to develop methodology
 - Provinces & other stakeholders contacted for input



How is this different

2009 Mosaic land cover

Project was undertaken in-house

Mosaic Land Cover

30M resolution

8 Major Land use classes

Habitat modification layer

SANBI consulted interested stakeholders, esp. Conservation Planners

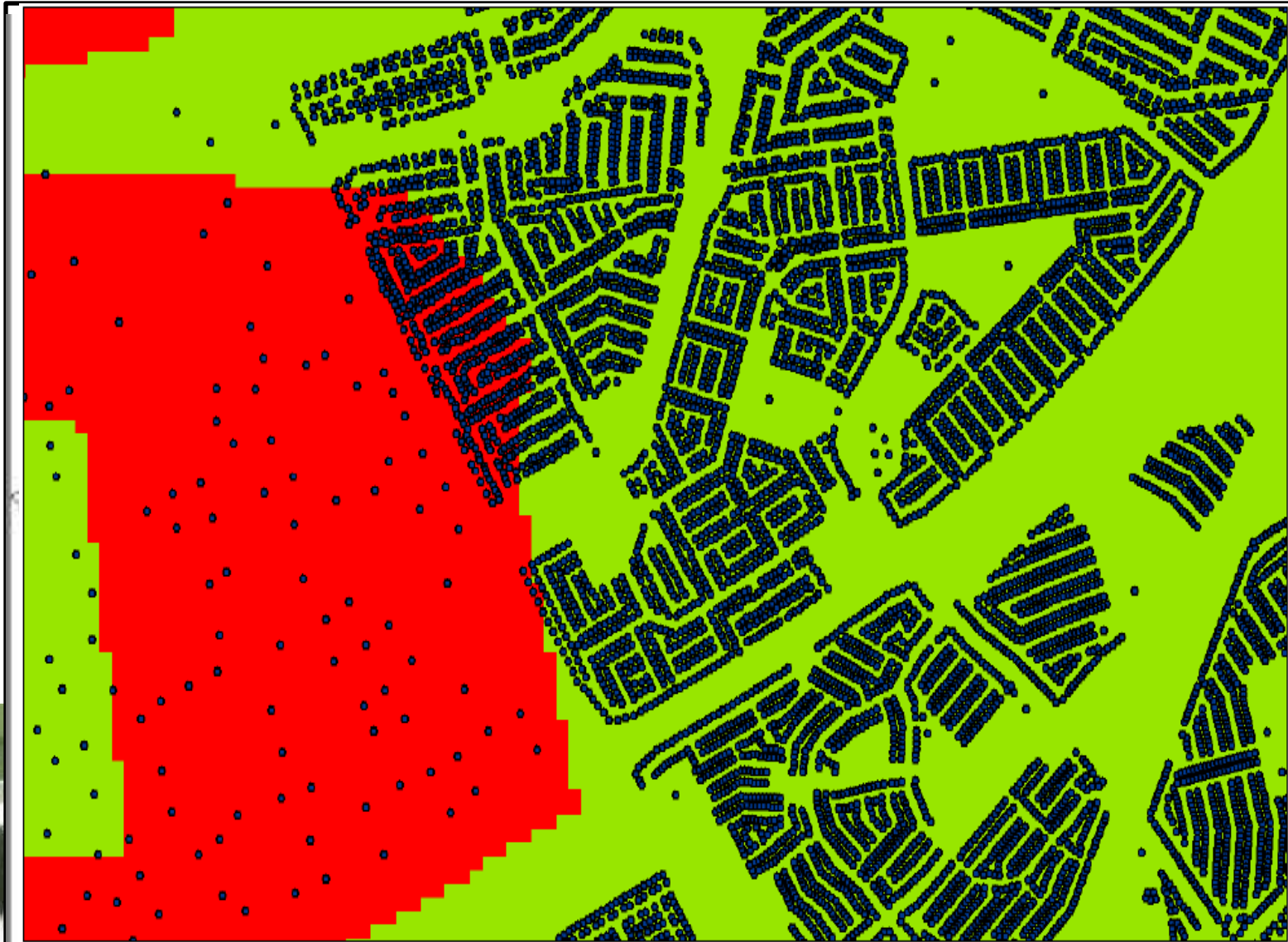
Habitat Modification Layer

10M resolution

14 Major Modification classes



Datasets used



Data Harmonization

- All datasets were resampled into 10m resolution.
- GIS models were developed to automate some processing
- Priority was given to some data based on expert input and their year of production, resolution, scale, etc.
- Provincial land cover datasets were reclassified into 14 classes

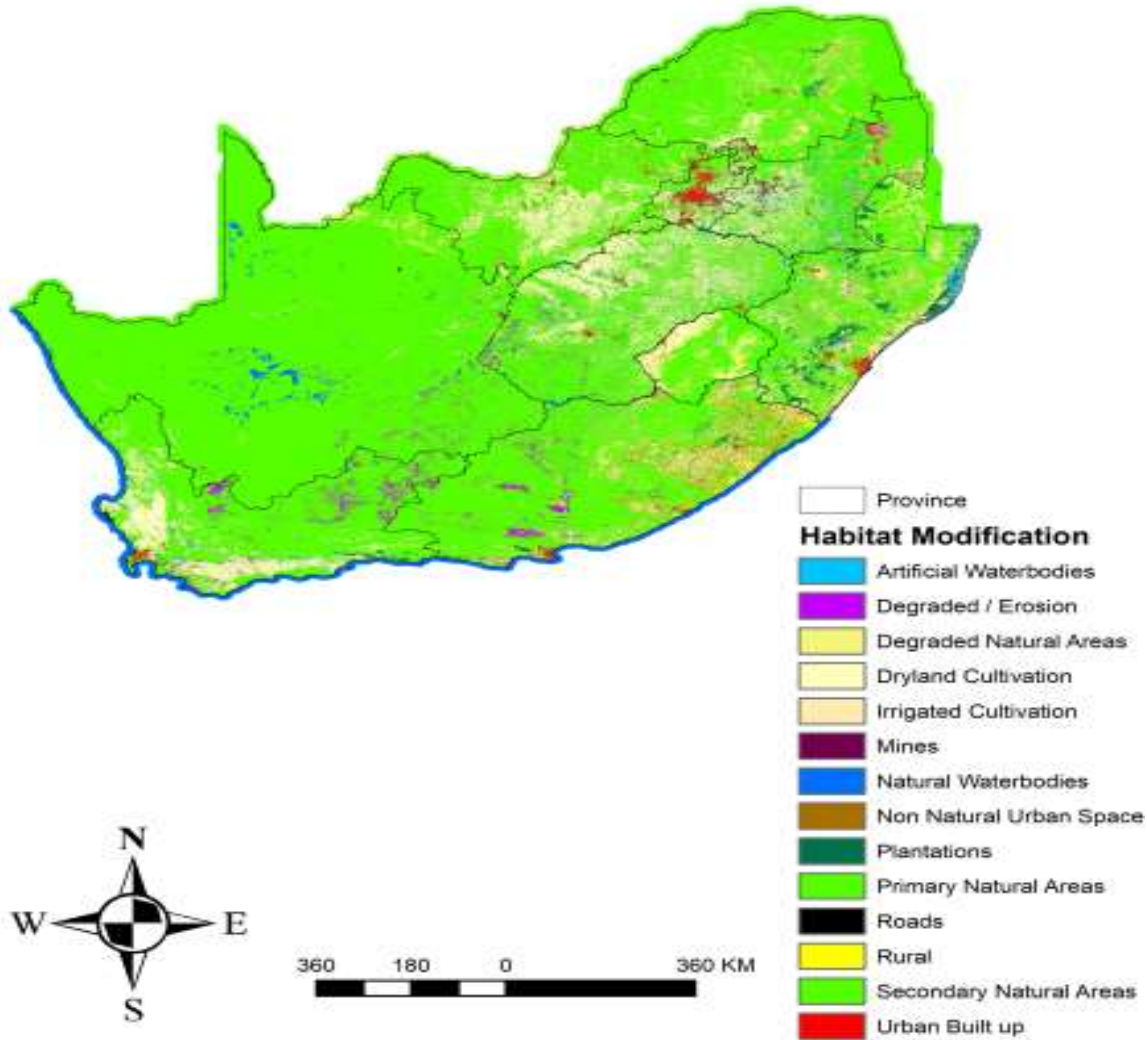


Habitat Modification Classes

Level 1	Level 2
Natural Area	Primary Natural Area
	Degraded Natural Area
	Secondary Natural Area
Cultivation	Dryland Cultivation
	Irrigated Cultivation
Plantations	Plantations
Waterbodies	Natural Waterbodies
	Artificial Waterbodies
Roads	Roads
Urban / Built up	Urban / Built up
Rural	Rural Settlements
Non Natural Urban Space	Non Natural Urban Space
Mining	Mines



HABITAT MODIFICATION



Land Cover Progress in SA

- NGI is mandated to create NLC for the country (province by province analysis)
- Geo Terra Image has recently done NLC using LandSat 8 (**30M resolution, 10 classes?**)
- Provinces continue with their provincial land cover mapping



Thank you

