

What is happening in the Western Cape?

Kerry Maree, Genevieve Pence and Mellisa Naiker

Biodiversity Planning Forum
13-16 May 2014
Mpekweni

Overview

What's working?

- SDFs
- PA expansion

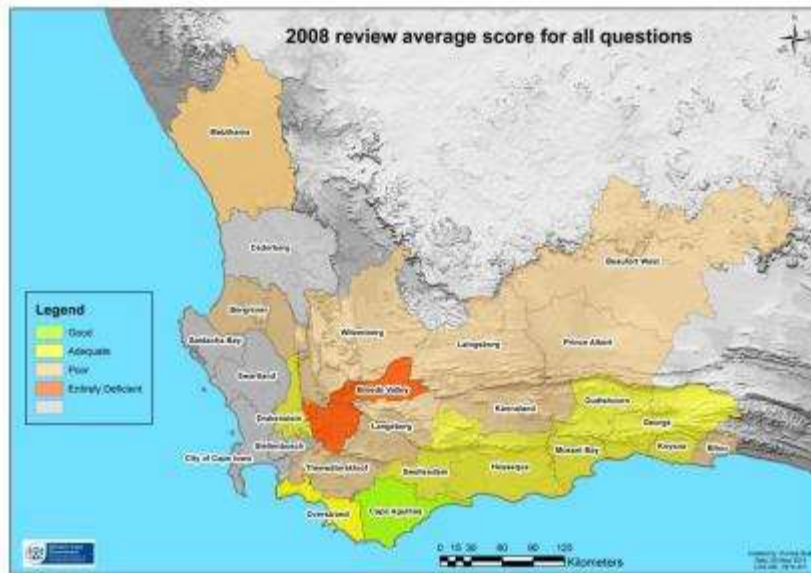
What's not working?

- Ecosystem status
- WCBF 2014
- UBRV SEA
- Sandveld EMF

Conclusion and recommendations

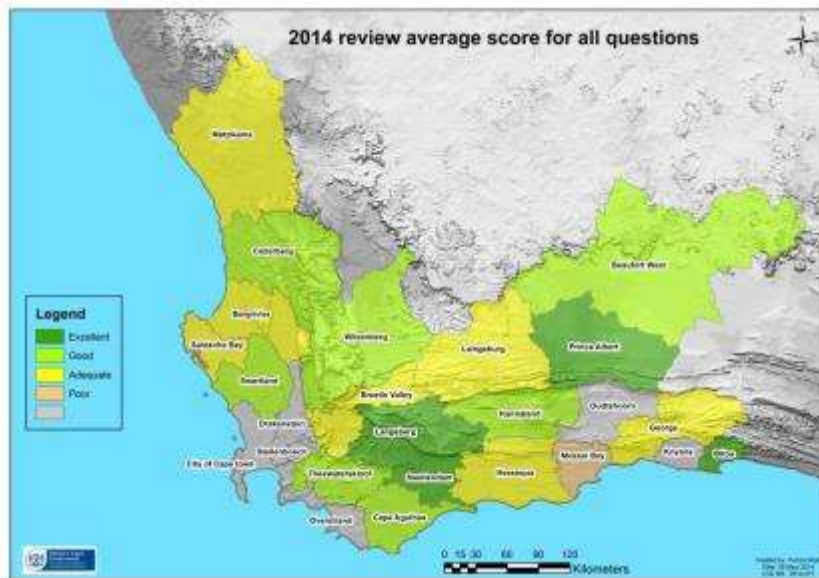


What's working: SDFs



SDF review 2008

- 11 poor or entirely deficient municipalities
- 1 good municipality
- 0 excellent municipalities



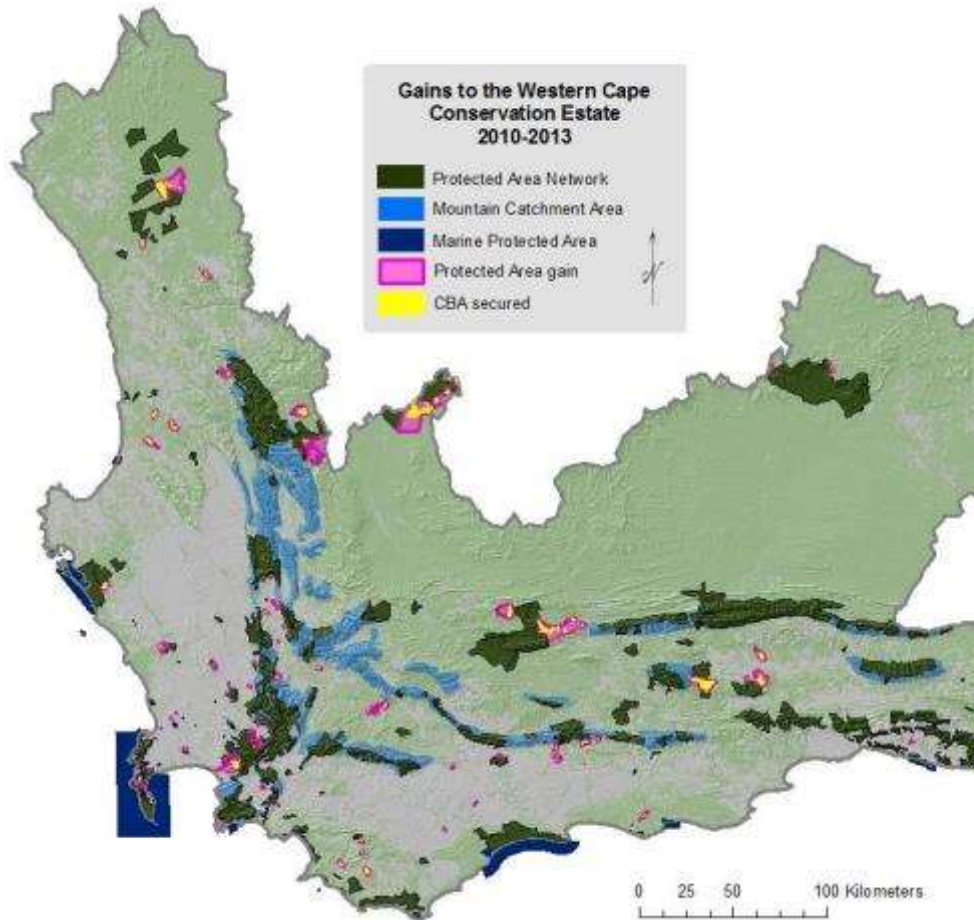
SDF review 2014

- 1 poor municipality
- 7 good municipality
- 4 excellent municipalities

11 municipalities have adopted CBAs as Core 1 (extra 5 have partially adopted)

100% mention CBAs while 20% mention ecosystem status

What's working: Protected Areas



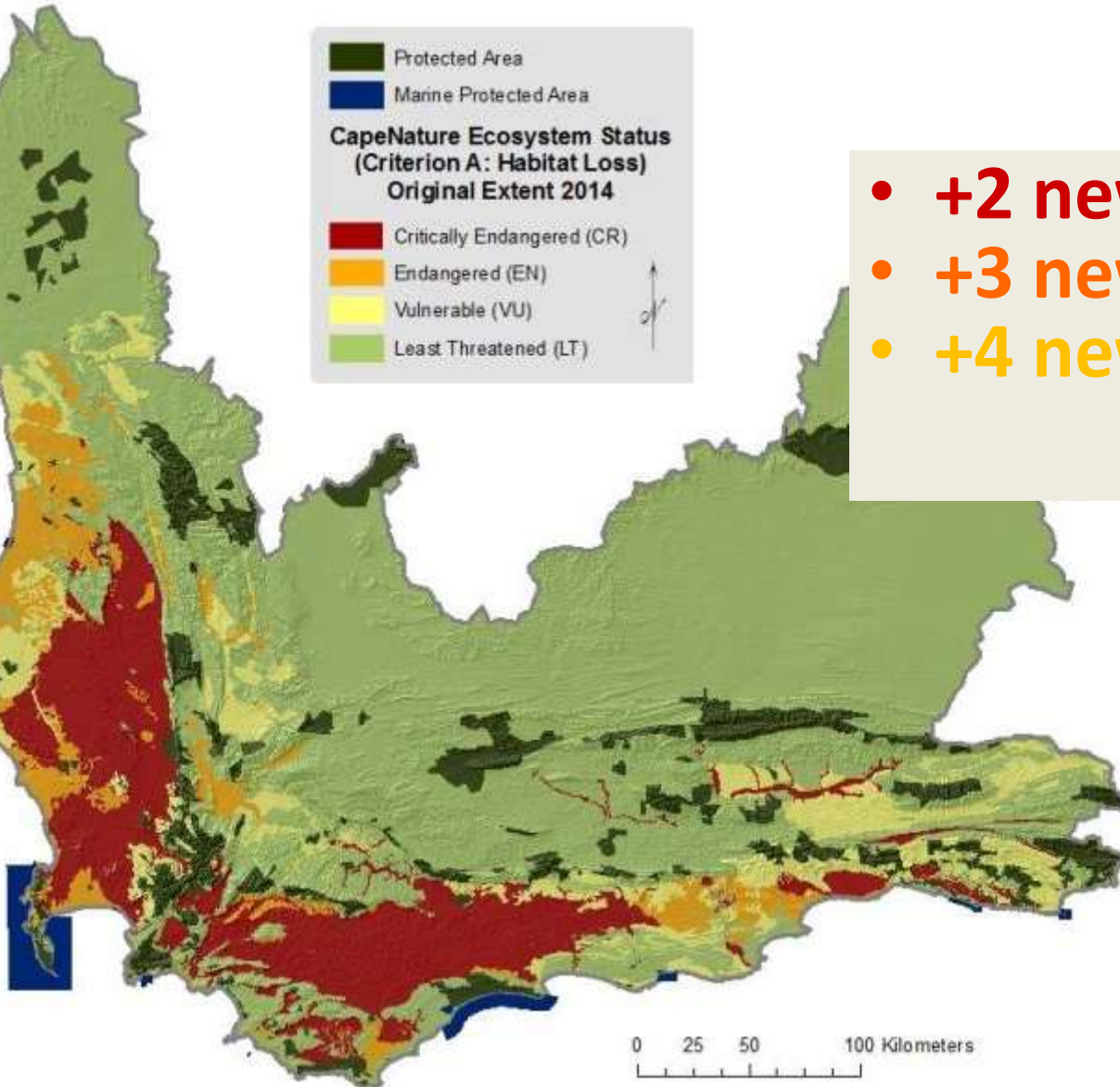
77 500 ha gained, of which 37% (28 200 ha) are CBAs



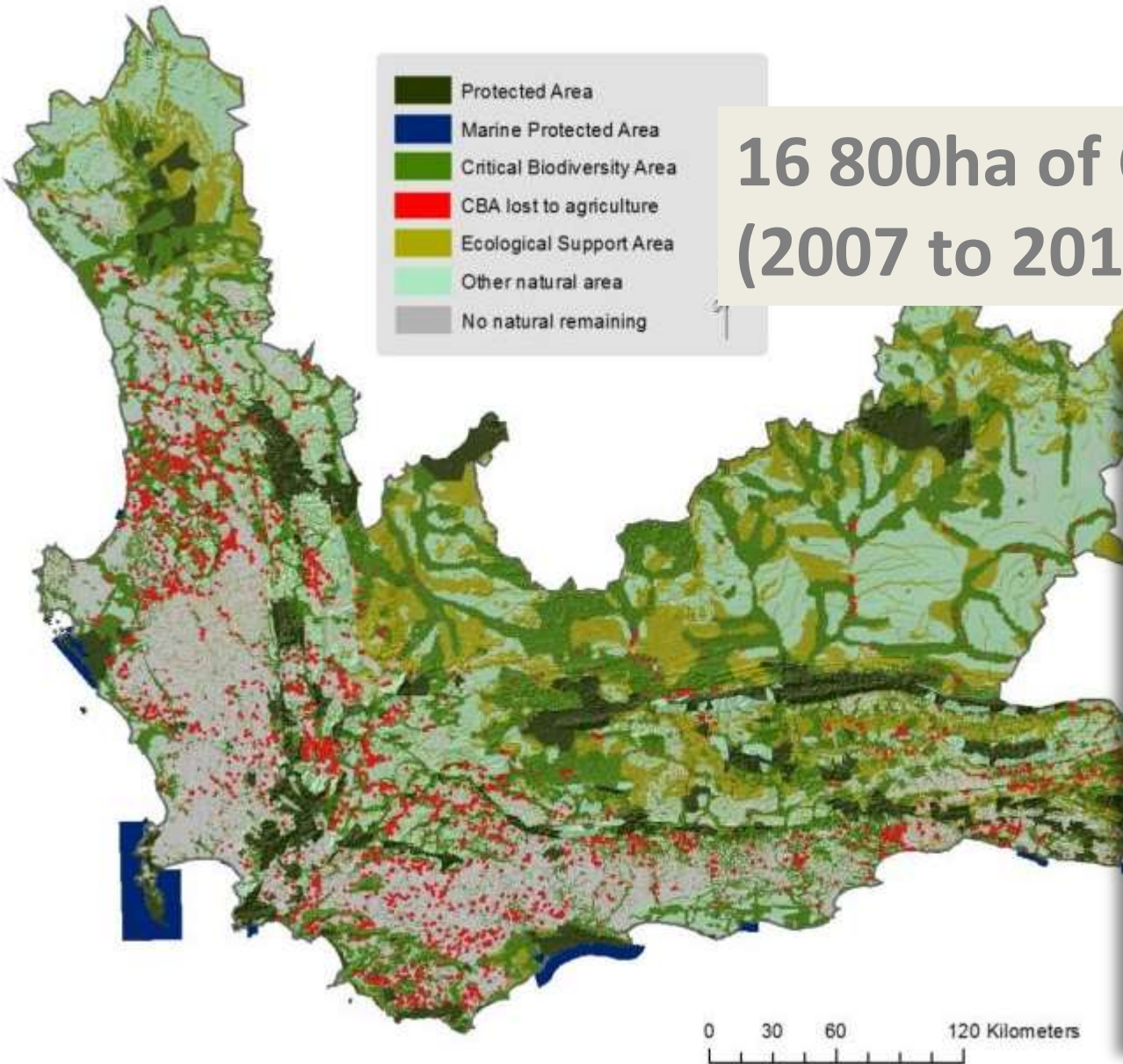
What's not working: Ecosystem status



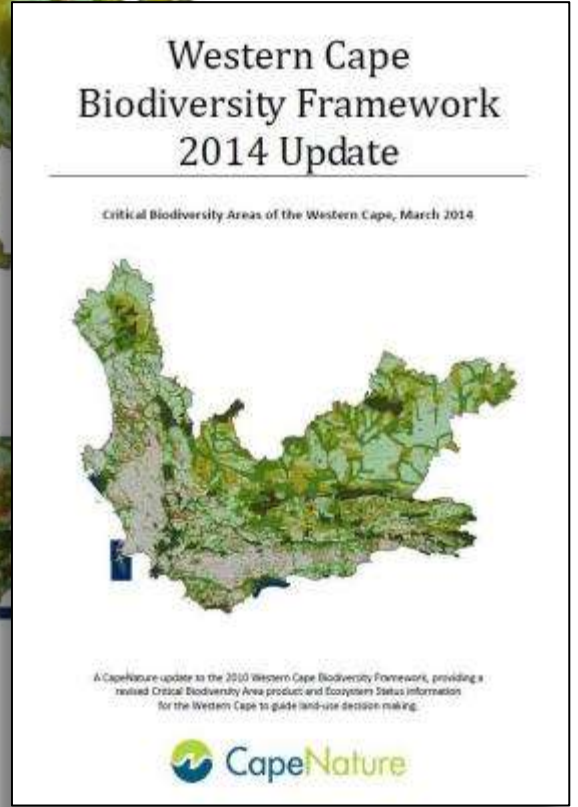
- **+2 new CR**
- **+3 new EN**
- **+4 new VU**



What's not working: Loss of CBAs to agriculture



16 800ha of CBAs converted (2007 to 2011)



What's not working: UBRV SEA

Agri-WC, CapeNature
and WCDoA project

Funded by TMF

Objective: easier and
cheaper application
process for farmers

Undertaking specialists
studies required by
authorization process



steering
committee
member
cultivates without
authorization

What's not working: Sandveld EMF

DEADP and WCDoA

Objective: reduce conflict between conservation and agriculture easier and cheaper application process for farmers

Ground-truthing CBAs to id those which can be cultivated



- ❖ No need for industry to expand
- ❖ 13.3% CBAs already lost
- ❖ Aiding big farms with high transformation levels and possibly illegal fields

Concluding remarks

update



protect

