



## **BIOPAMA as a resource**

Africa Rising Conference  
19 – 22 May 2015

**Coordinator ESA region:  
Christine Mentzel**

**Technical Advisor ESA region:  
Selwyn Willoughby**

# Vision

Address threats to biodiversity in Protected Areas in ACP countries through:

- improving access to the best available information
- enhancing the work of existing institutions and networks
- building capacity to improve policy and decision-making on biodiversity conservation, protected areas management, and access and benefit sharing.

**Note: Final year of the project, phase 1.**

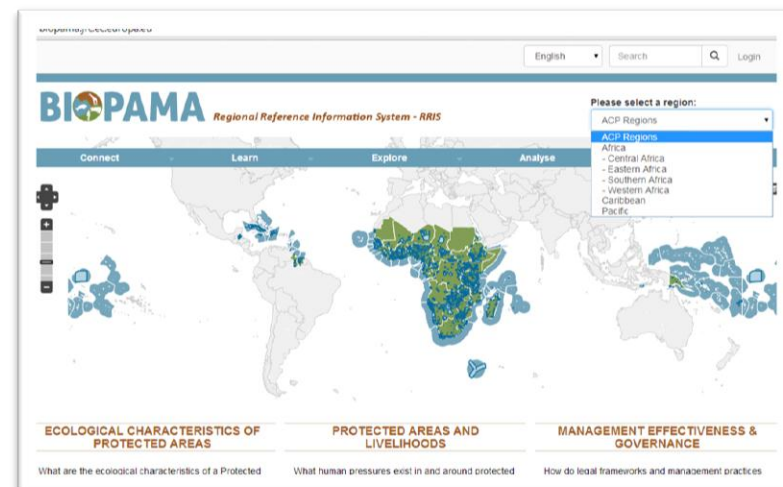
## A major objective: Implementation of Observatories

- ❖ Serve as knowledge centres for the regions;



Regional Reference Information System

- ❖ Facilitate networking of experts and institutions;
- ❖ Support capacity building;
- ❖ Coordinate technical and policy support to national agencies and regional organizations.



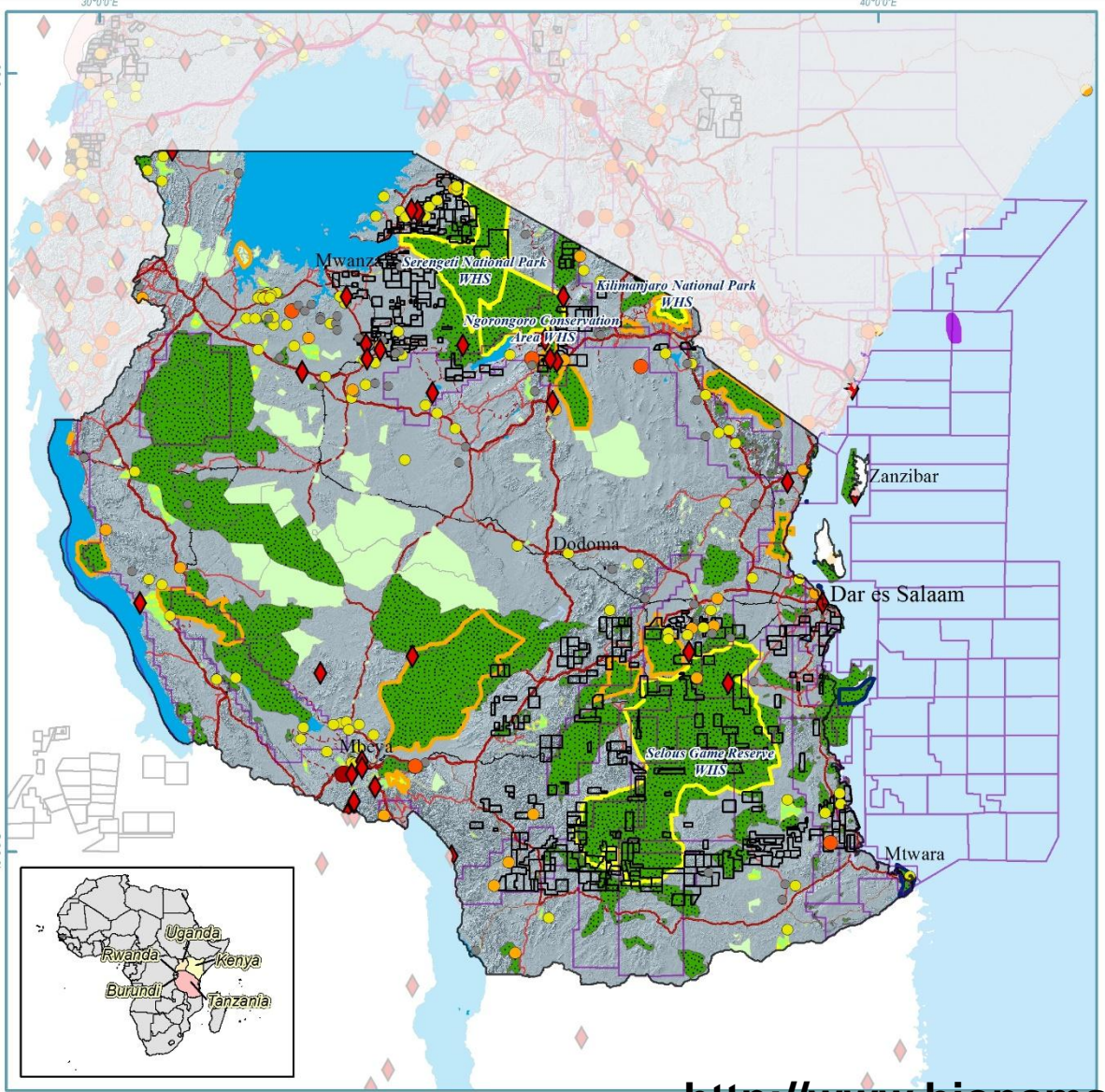
# Regional Reference Information System – main features

- Online information System linking relevant Protected Area-related information and data in the region
- Provides access to authoritative scientific information to support policy and decision-making (e.g. information on agriculture, mining, oil and gas concessions, infrastructure)

## Protected Areas and Extractive Industries Tanzania

**Legend**

- Protected Areas directly affected by extractive industry activity or interest
- Protected Areas within a 20 km radius of extractive industry activity or interest
- Unaffected Protected Areas
- World Heritage Sites
- National Parks
- Marine National Parks
- Lakes
- Roads
- Railroad
- Active Exploration
- Licenses - Mineral
- Licenses - Oil and Gas
- Oil and Gas Fields
- Mineral Deposits: 4, 3, 2, 1, 0



**IUCN BIOPAMA**

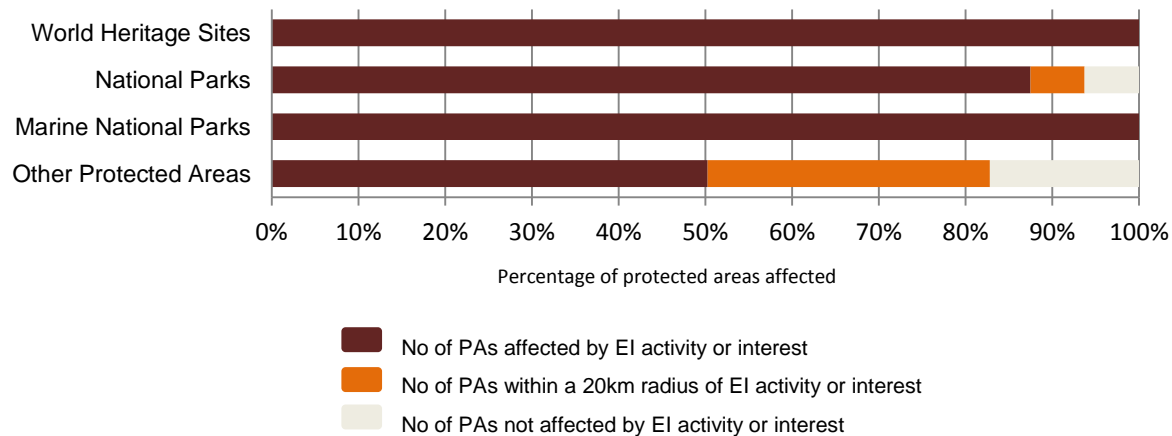
**Funding & Implementing Partners**

- European Union
- GIZ (German Development Cooperation)

**Data Sources**

- U.S. Energy Information Administration (EIA)
- Transboundary Foundation
- U.S. Geological Survey
- African World Heritage Fund

Protected Area (PA) type	Number of PAs in the network	No of PAs affected by EI activity or interest	No of PAs within a 20km radius of EI activity or interest	No of PAs not affected by EI activity or interest
World Heritage Sites	4	4	-	-
National Parks	16	14	1	1
Marine National Parks (including reserves & sanctuary)	5	5	-	-
Other Protected Areas	593	298	193	102
<b>Total</b>	<b>618</b>	<b>321</b>	<b>194</b>	<b>103</b>



**Existing RRIS  
Platform**

**Training &  
Outreach**

**Institutional  
support**

**Operational  
Support**

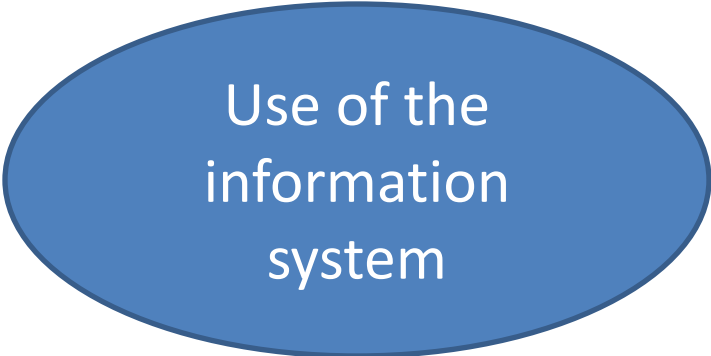
**Focussed on strengthening key institutions to institutionalise the training**

A blue oval containing the text "Policy development".

Policy  
development

A blue oval containing the text "Negotiation training".

Negotiation  
training

A blue oval containing the text "Use of the information system".

Use of the  
information  
system

A blue oval containing the text "Data Management".

Data  
Management



## **West & Central Africa**

The Coach Observatory Mission Information Toolkit (COMIT)  
training of national coaches, 29 June -12 July 2015, Niger

## **East & Southern Africa**

Regional Reference Information System Training, 20 – 23 July  
2015, Nairobi

**<http://www.biopama.org>**

**THANK YOU**