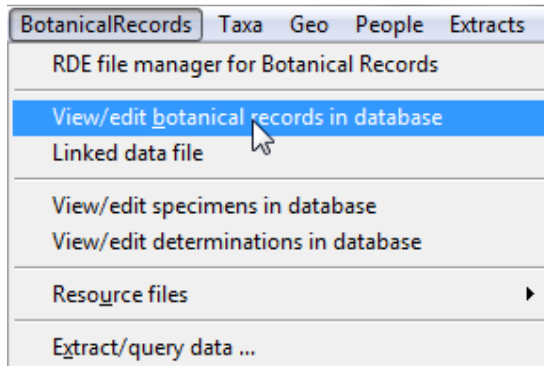
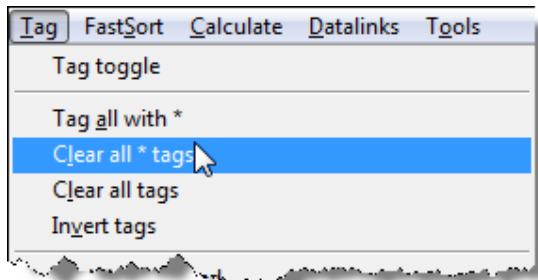


DETERMINATIONS CHANGES VIA RDE

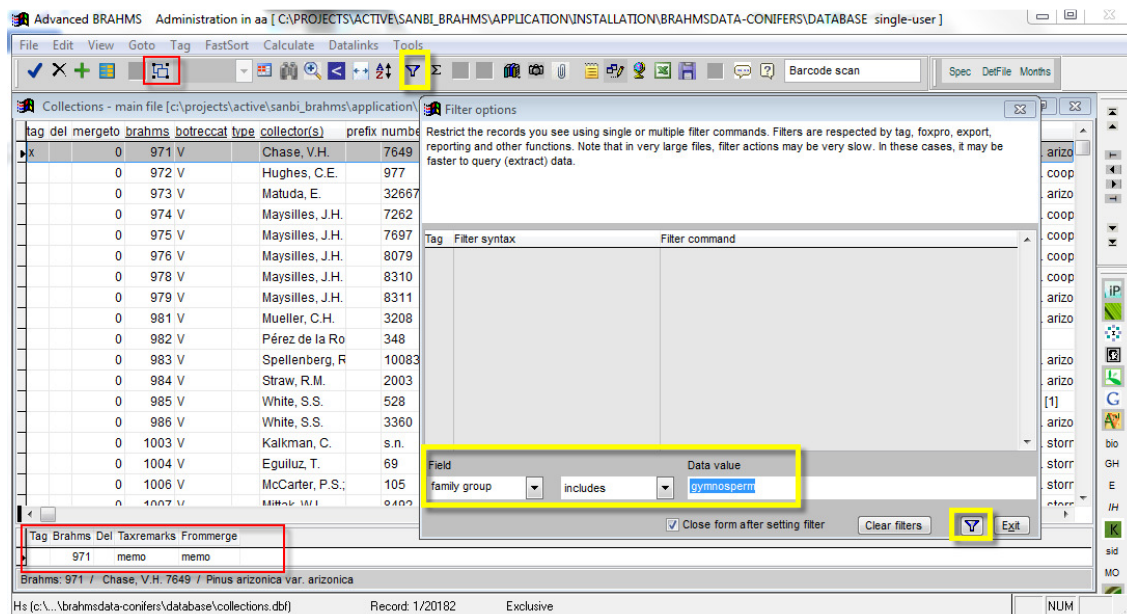
1. Open Botanical records.



2. Make sure all previous tags are cleared.

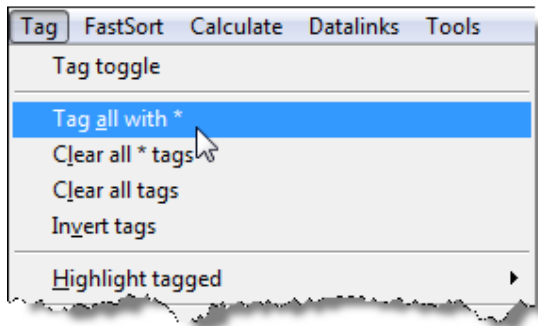


3. Filter records to your requirements. Filters can be applied in main botanical records file or the linked fields, which is slightly slower.

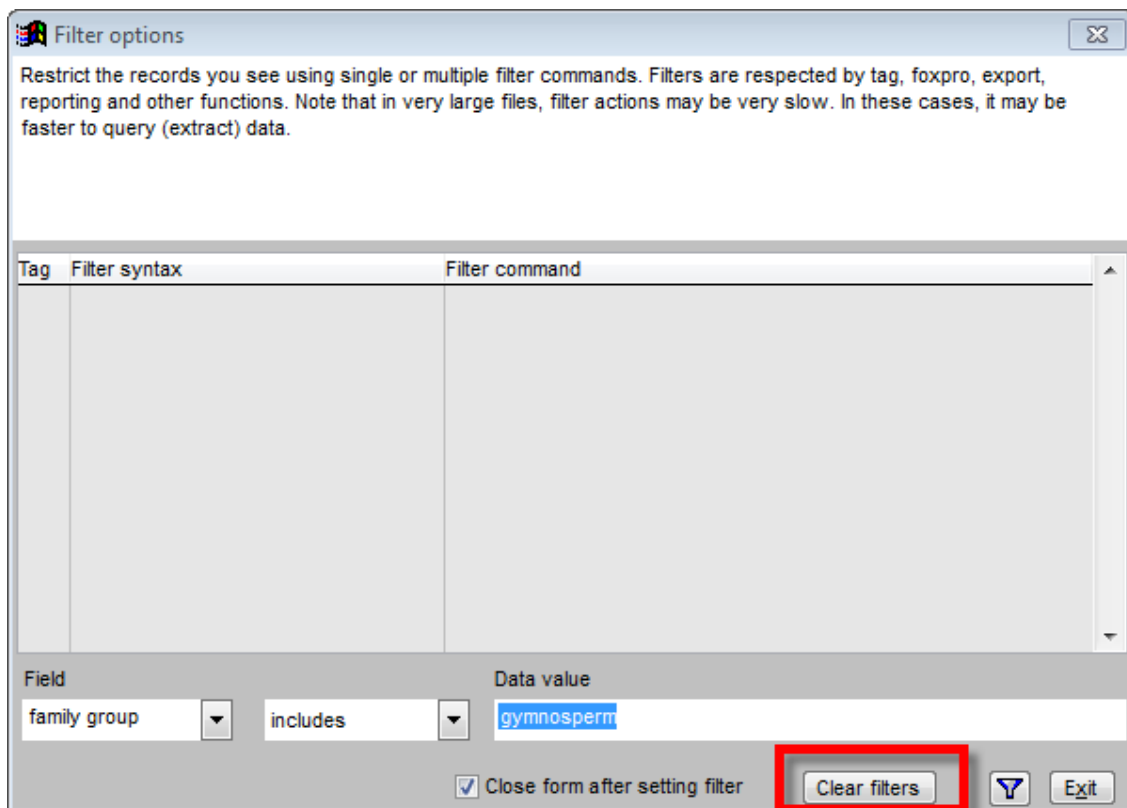


e.g. linked field used for DETBY acronyms is "Detbytext"

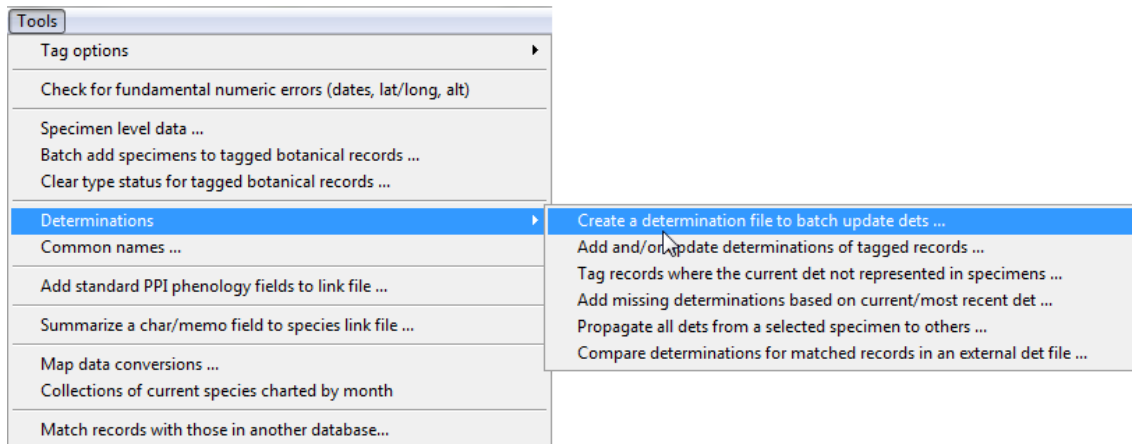
4. Tag all records that was filtered



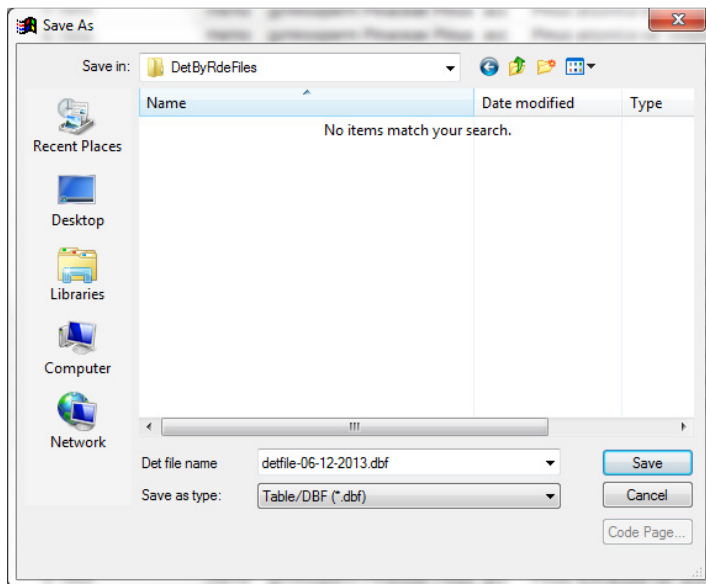
5. Clear your filter (very important if the filter was applied on a linked field!)



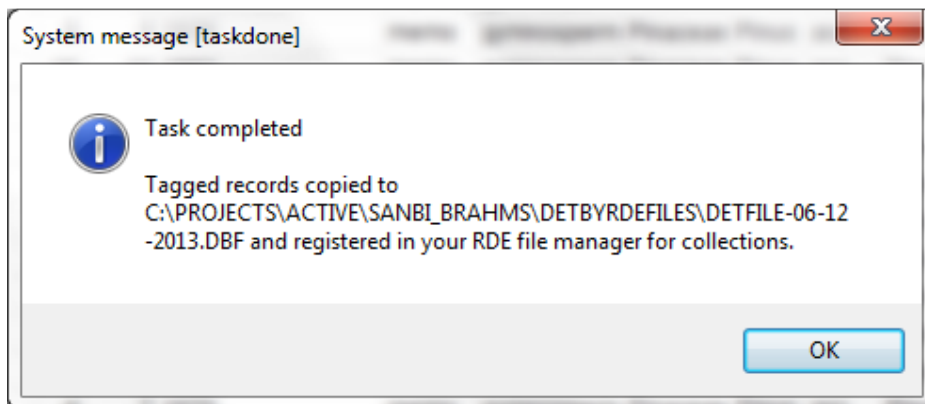
6. Export a determination RDE file.



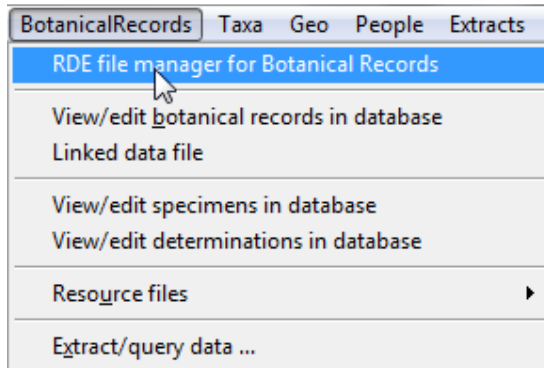
7. Save the file



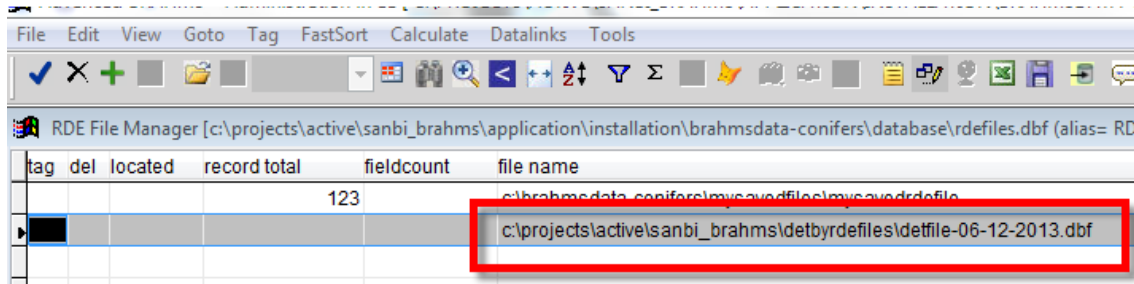
8. The file is automatically added to your RDE file manager.



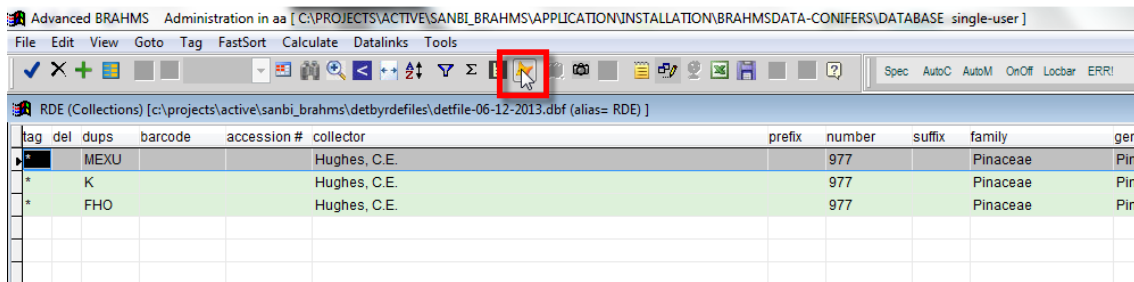
9. Open the file via the RDE file manager for Botanical records



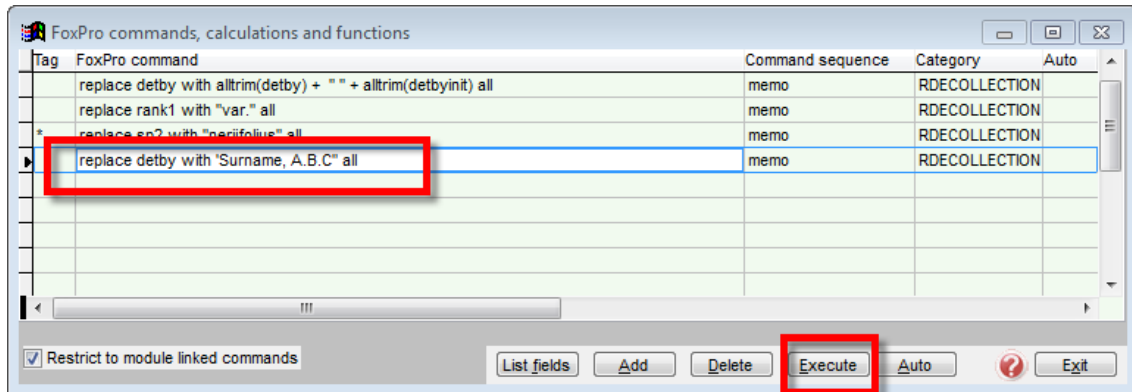
Double click record to open the RDE file



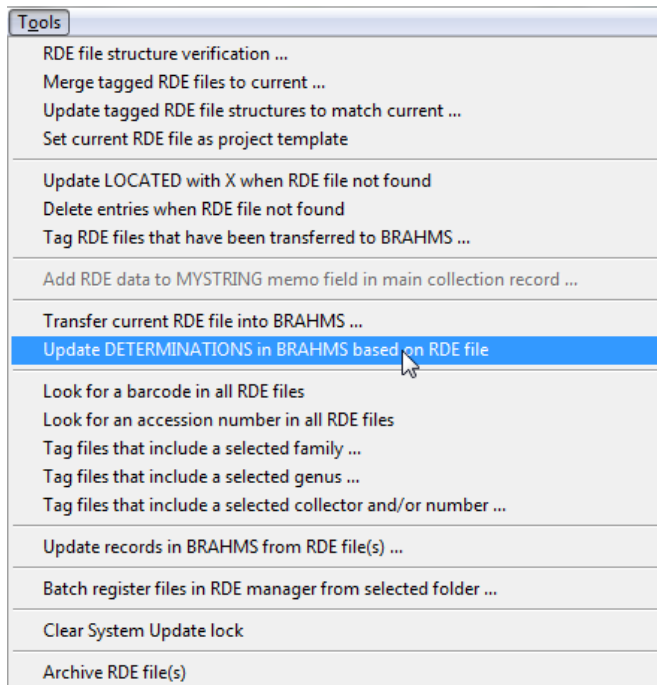
10. Open the FoxPro commands interface.

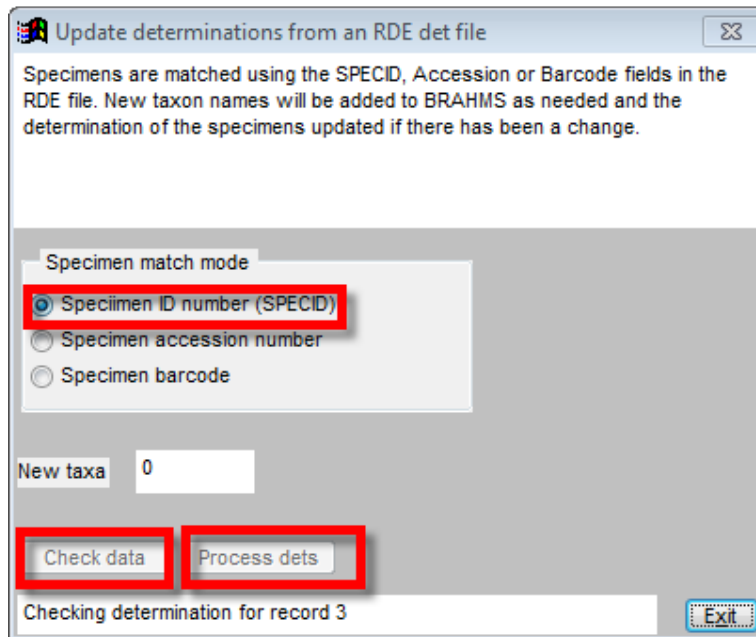


11. Run a command that can update the detby field (or any other fields as per user requirements) in all records and then exit FoxPro. Note that records can be update manually by the user as well.



12. Select the record for the RDE file in the Botanical RDE file manager first and select the command that transfer the determination field values in the RDE file into the main database. Because the main database was the source for the RDE file the join can be done on specimen ID.





13. An additional record is created in the main database so tracking the determination history.

BOTANICAL RECORDS
 Kluge, J.P. : 336
 Helichrysum mixtum (Kuntze) Moeser var. mixtum

Collection | Geo | Curation | **Specimens** | Track changes

DEL	CATEGORY	HERBARIUM	HERBLOCATE	BARCODE	OLDBARCODE	ACCESSION	PHENOLOGY	SEEN	SEENWHERE	NOTE	TYPE	TYPE_OF
	Herbarium vouch	PRE		PRE0202426-0		0202426				memo		

+ X Edit specimens Reduced field view Auto-add/copy det. details Unify det. records Type -> Det Clear type

CURDET	FAMILY	DETERMINATION	DETBY	DETDAY	DETMONTH	DETYEAR	DETSTATUS	DETCONREV	DETNOTES	GENUS	SP1	AUTHOR1	RANK1	SP2
	Asterac	Helichrysum mixt		0	0	0			memo	Helichry mixt			var.	mixt
*	Asterac	Helichrysum mixt	Welmar	0	0	0			Memo	Helichry mixt			var.	mixt

+ X Determination details for record ID: 1 (Herbarium: PRE) Det->Type K MO Link ref Edit det. notes
 Dbl-click curdet field to switch current determination