

HELP WANTED

Biodiversity Planning Forum, 2015

Kerry Maree, Genevieve Pence and Kerry Purnell





“As most protected areas have been established in the last fifty years, this represents perhaps the largest and fastest change in land and water use in the history of the planet.”

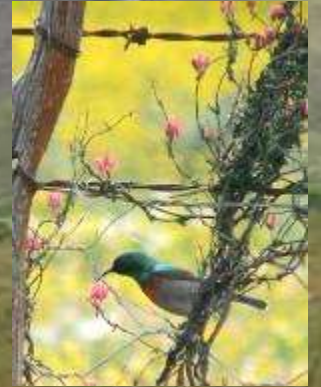
- Nik Lopoukhine and Braulio Ferreira de Souza Dias.
Parks 2012, 18.1

Biodiversity of the Western Cape

- World's most diverse non-tropical flora : CFR
- Richest desert flora: Succulent Karoo
- Over 9000 plant species
- 70% plant endemism
- Exceptional invertebrate diversity
- Centre of endemism for freshwater fish, reptiles and amphibians
- Global biodiversity hotspot
- Majority of country's threatened ecosystems



Biodiversity of the Western Cape



Blah blah blah.....

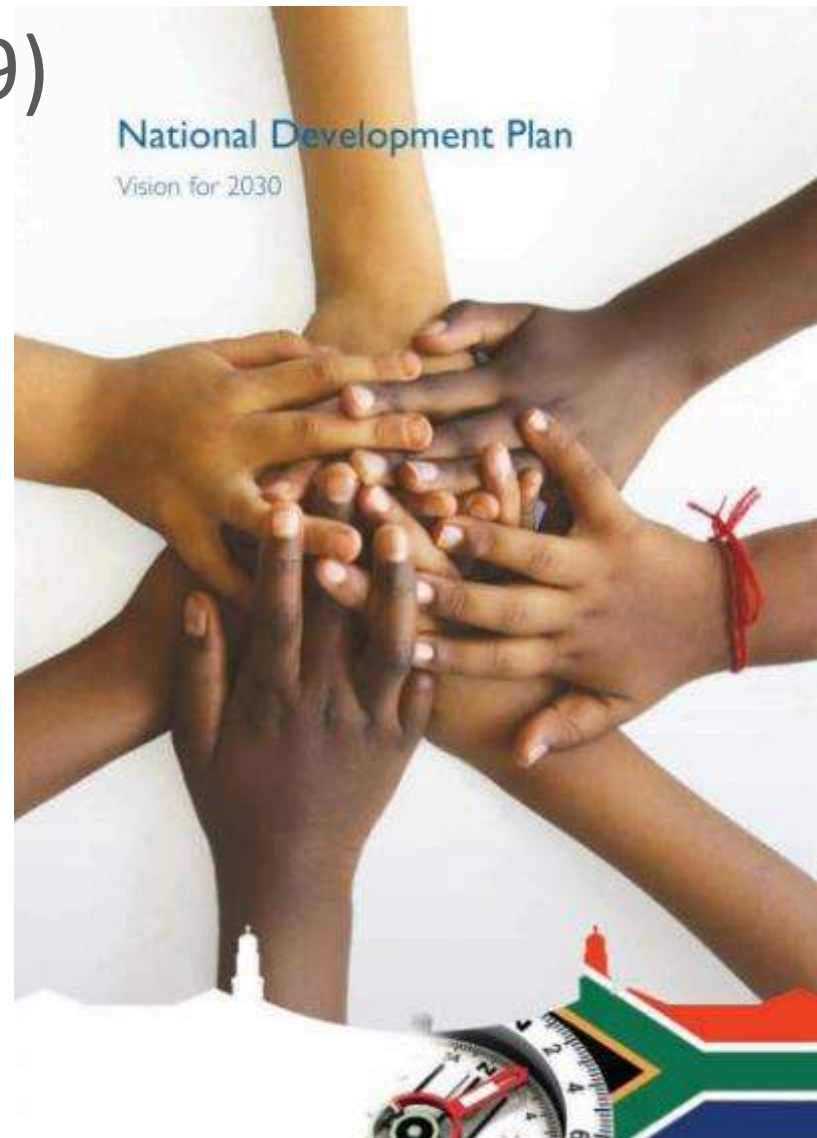


What is our protection target?

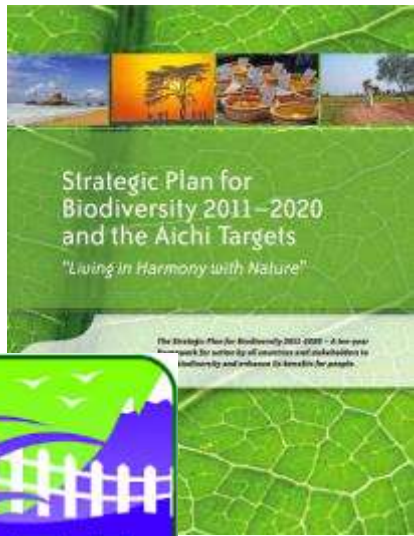
Outcome 10 (2014 – 2019)

Expand the conservation estate through declaration of state owned protected areas, MPAs and biodiversity stewardship

- Nationally: → 10.7% (2014) 13.2 % (2019)
- WC: we are already beyond the 13.2%
- No mention of representivity



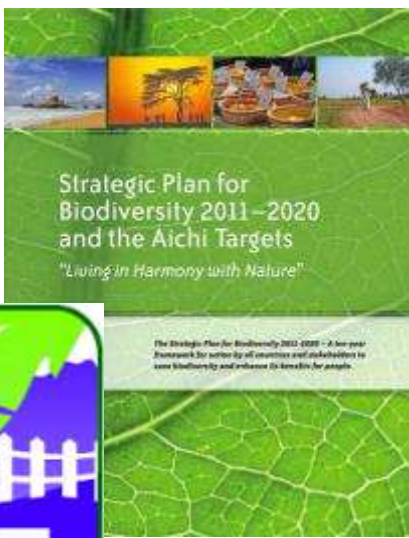
What is our protection target?



Recognizing the
need to go
beyond 17% post
2020

By 2020, **at least** 17 % of terrestrial and inland water areas and 10 % of coastal and marine areas, **especially areas of particular importance** for biodiversity and ecosystem services, are conserved through **effectively and equitably managed, ecologically representative** and **well-connected** systems of protected areas and other effective area-based conservation measures, and integrated into the wider landscape and seascape

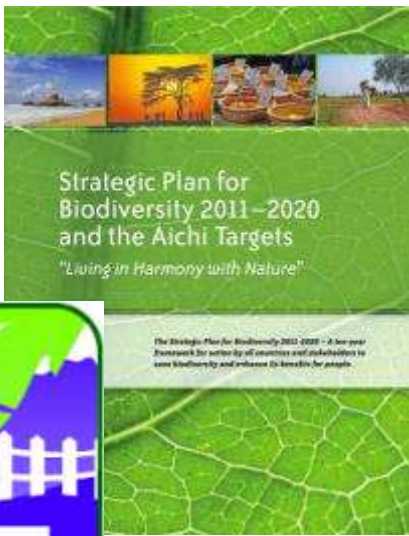




IBA, CBAs,
FEPAs, etc.

By 2020, *at least* 17 % of terrestrial and inland water areas and 10 % of coastal and marine areas, *especially areas of particular importance* for biodiversity and ecosystem services, are conserved through *effectively and equitably managed, ecologically representative* and *well-connected* systems of protected areas and other effective area-based conservation measures, and integrated into the wider landscape and seascape

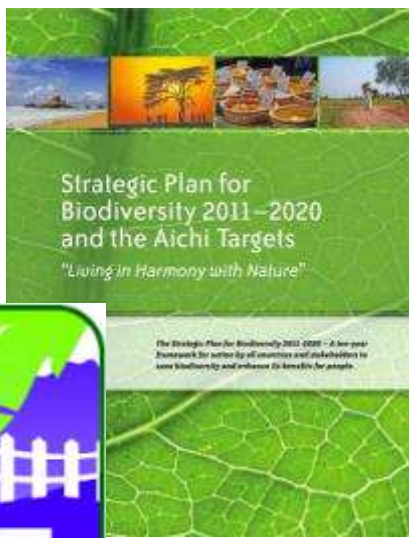




By 2020, **at least** 17 % of terrestrial and inland water areas and 10 % of coastal and marine areas, **especially areas of particular importance** for biodiversity and ecosystem services, are conserved through **effectively and equitably managed, ecologically representative** and **well-connected** systems of protected areas and other effective area-based conservation measures, and integrated into the wider landscape and seascape

no paper parks

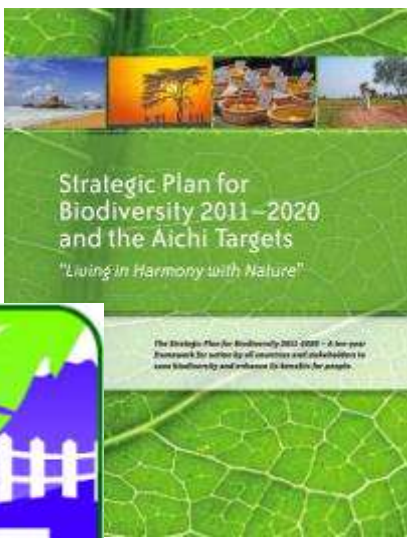




By 2020, *at least* 17 % of terrestrial and inland water areas and 10 % of coastal and marine areas, *especially areas of particular importance* for biodiversity and ecosystem services, are conserved through *effectively and equitably managed, ecologically representative* and *well-connected* systems of protected areas and other effective area-based conservation measures, and integrated into the wider landscape and seascape

- **thus viable and likely to persist,**
- **climate change adaptation**





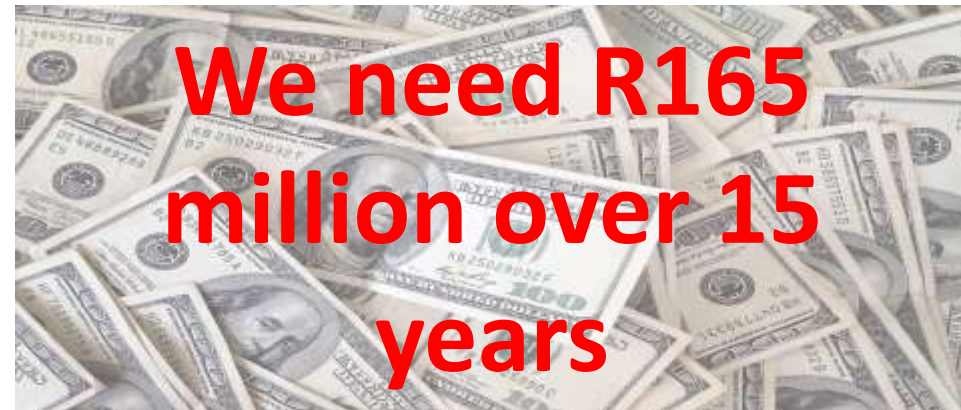
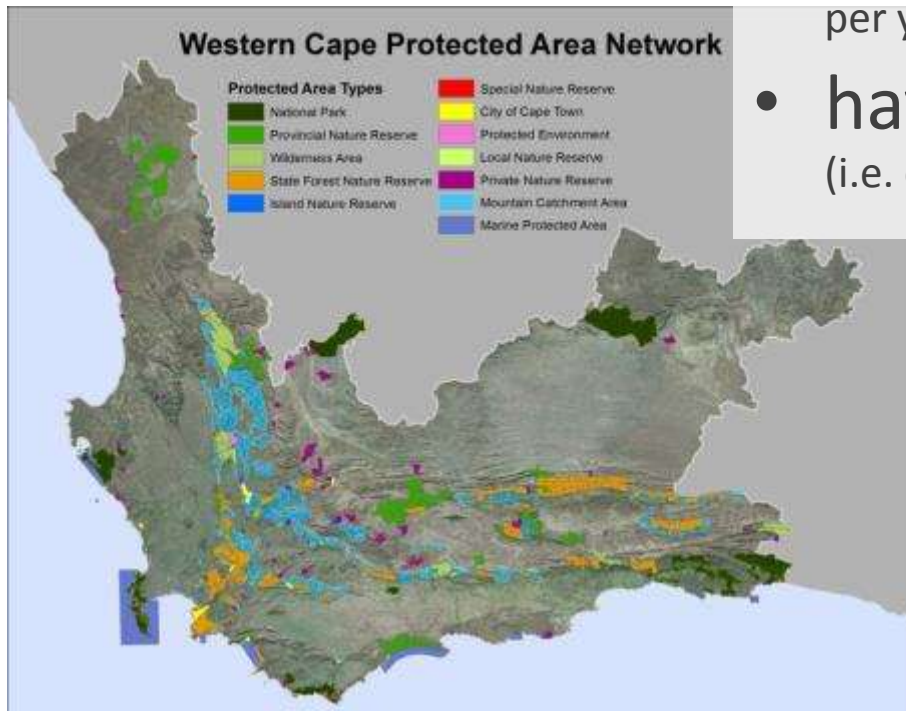
Ecoregions – vegetation types

By 2020, **at least** 17 % of terrestrial and inland water areas and 10 % of coastal and marine areas, **especially areas of particular importance** for biodiversity and ecosystem services, are conserved through **effectively and equitably managed, ecologically representative** and **well-connected** systems of protected areas and other effective area-based conservation measures, and integrated into the wider landscape and seascape



How is the Western Cape doing?

- 124 000 ha added in last 5 years (84% of previous target)
- 1.8 million ha as Protected Areas
- need 1 million ha (by 2030), i.e. 66 666 ha per year for 15 years
- have funds for 9 500 ha per year (i.e. one seventh)





R4.4 billion to build
R124 million per year to maintain (R40 million absolute loss)



HELP. PLEASE.