



# National Vegetation Map of South Africa, Lesotho and Swaziland: building the map for 2017



# VegMap Products

- **Physical resources:**

- **Wall Map**

- **Book**

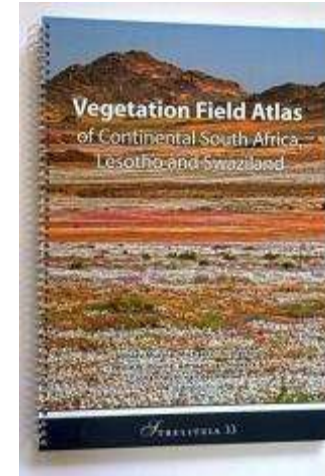
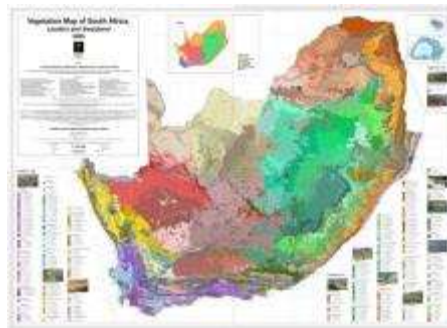
- **Field atlas**

- **Online resources:**

- **2006 map**

- **2009 update**

- **2012 update (soon)**

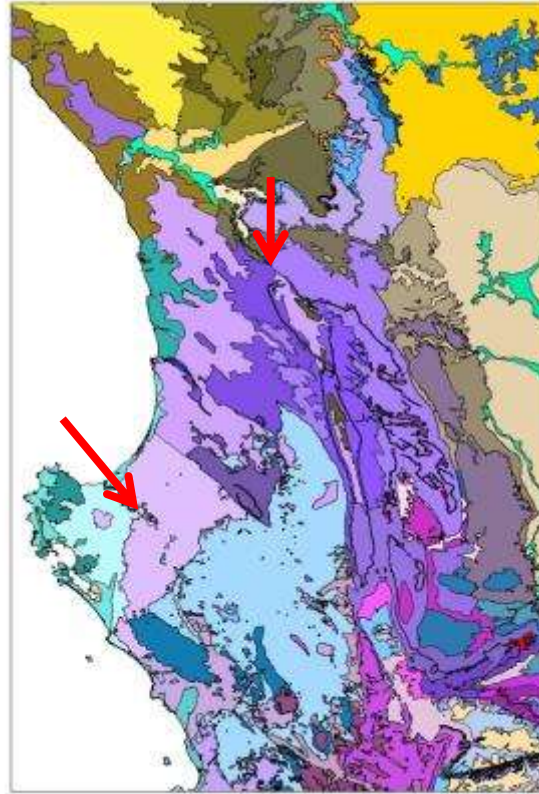


# What does “updating the VegMap” mean?

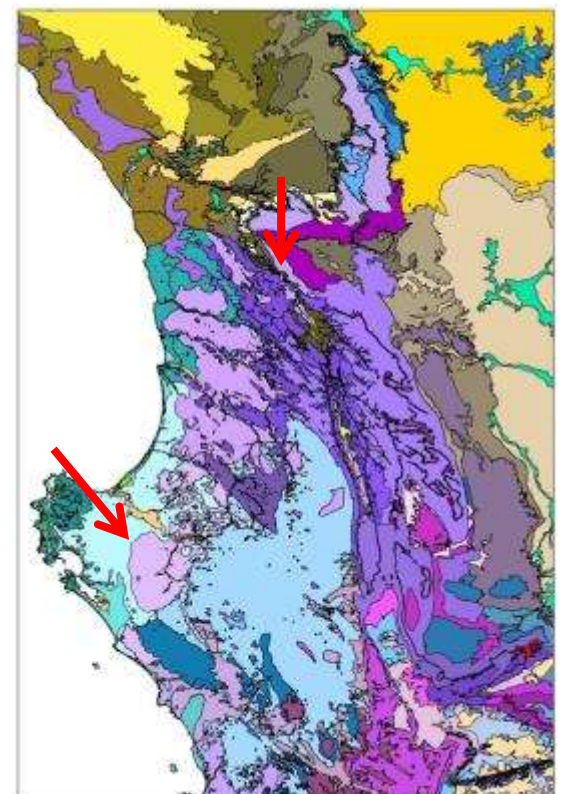
It is the **REFINEMENT** of the existing vegetation map with better quality data and not a reflection of a change in vegetation distribution



Google Earth



2006 Map



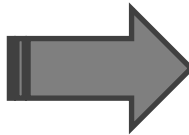
2009 Map



# How do changes to the vegetation map happen? The admin ☹️

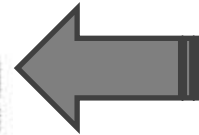
1. Proposed changes submitted via BGIS Website:

<http://bgis.sanbi.org/vegmap/map2009.asp>



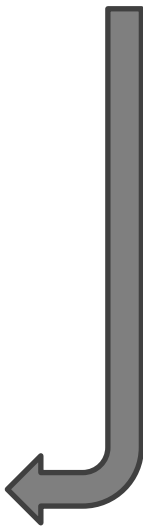
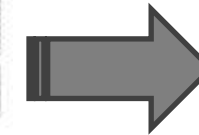
2. Complete forms on website:

1. Species List
  2. Vegetation Description
- Email to : [Vegmap@sanbi.org.za](mailto:Vegmap@sanbi.org.za)

Two screenshots of web forms. The left one is a table with multiple columns and rows, likely for entering species data. The right one is a form with several text input fields and checkboxes, used for providing a detailed vegetation description.

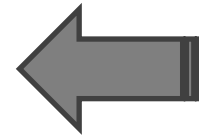
3. Filtering process:

1. Filter through justification
2. Feedback and submission refinement



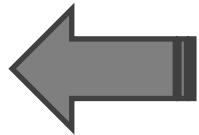
4. Submitted to VegMap Committee for approval:

1. Committee specialist opinion



5. Further refinement:

1. Vegetation Type Name
2. Description
3. Creation of Subtype



6. Map production and Publication on BGIS



# Governance: Ratification of updates

## Name: National Vegetation Map Committee

Vegetation Experts peer-review proposed changes to the National Vegetation Map and descriptions following listed protocols. Formally meet: ± once per year

### Members nominated at the 2007 open workshop:

- Mike Rutherford (Chair - SANBI, National)
  - Laco Mucina (University of Stellenbosch, National)
  - George Bredenkamp (University of Pretoria, National)
  - Selwyn Willoughby (SANBI, Data management)
  - Rob Scott-Shaw (KZN Wildlife, KZN)
  - Mervyn Lotter (Mpumalanga, Grassland & Savanna)
  - Hugo Bezuidenhout (SANParks, Grassland & Savanna)
  - Tony Rebelo (SANBI, Fynbos)
  - Coert Geldenhuys (Forests)
  - Erwin Sieben (University of Free State, Grassland)
  - Les Powrie (SANBI, Technical)
- Secretary: Funded by SANBI



# Governance: Ratification of updates

## Members nominated at the 2007 open workshop:

~~Mike Rutherford (Chair – SANBI, National)~~

Laco Mucina (University of Stellenbosch, National)

George Bredenkamp (University of Pretoria, National)

~~Selwyn Willoughby (SANBI, Data management)~~

Rob Scott-Shaw (KZN Wildlife, KZN)

Mervyn Lotter (Mpumalanga, Grassland & Savanna)

Hugo Bezuidenhout (SANParks, Grassland & Savanna)

Tony Rebelo (SANBI, Fynbos) Acting Chair

Coert Geldenhuys (Forests)

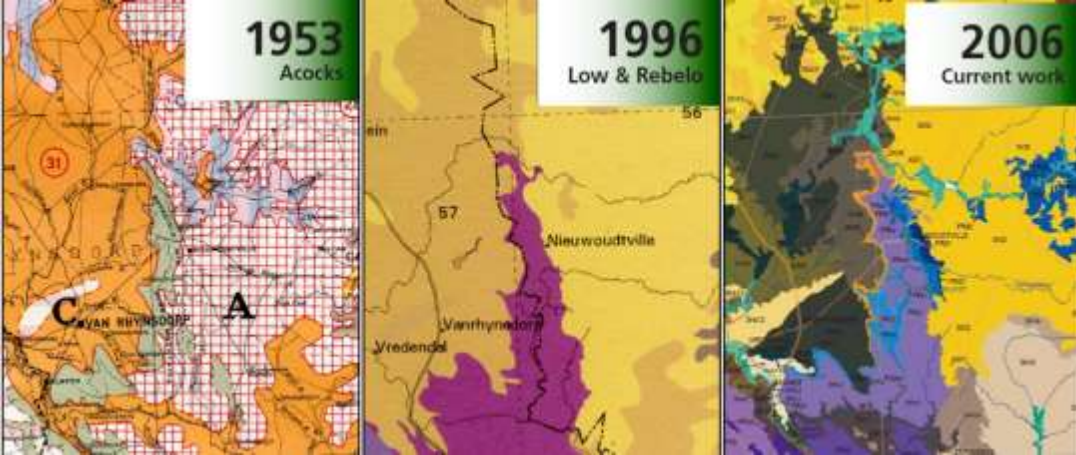
Erwin Sieben (University of Free State, Grassland)

Les Powrie (SANBI, Technical)

Secretary: Funded by SANBI



# Properties of the vegetation maps over time

Properties	Vegetation maps				
	Acocks 1953	Low & Rebello 1996	VEGMAP 2006	VEGMAP 2009	VEGMAP 2012
Published scale	1:1 500 000	1:1 850 000 1:2 000 000	1:1 000 000	1:1 000 000	1:1 000 000
					
Number of Vegetation types	70	68	435	439	447
Number of Polygons	548	3661	17 796	19 632	44 908
Average mapped unit area (km <sup>2</sup> )	2313	345	71 (SD±82)	65 (SD±78)	29 (SD±52)

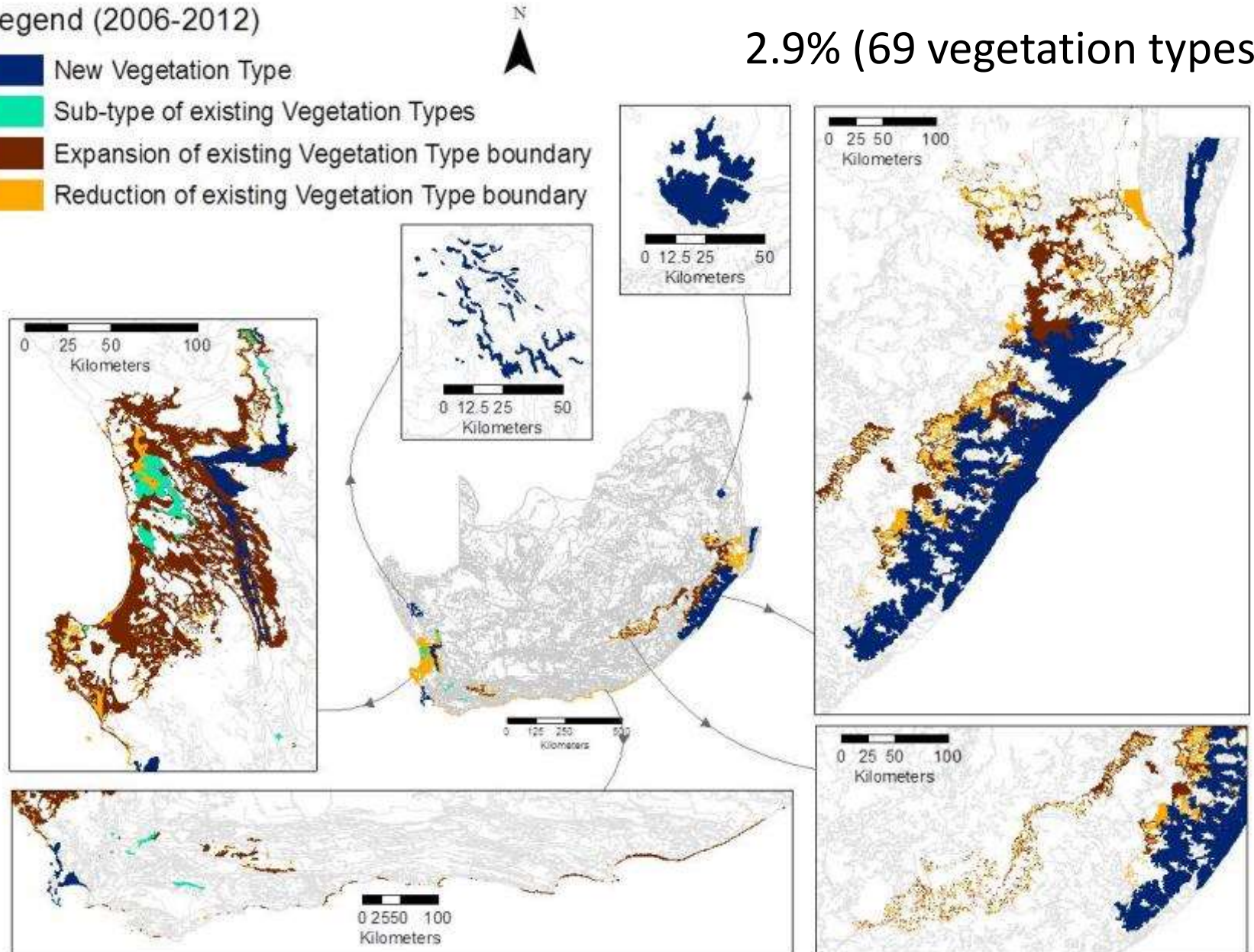


# Changes to the VEGMAP since 2006

Legend (2006-2012)

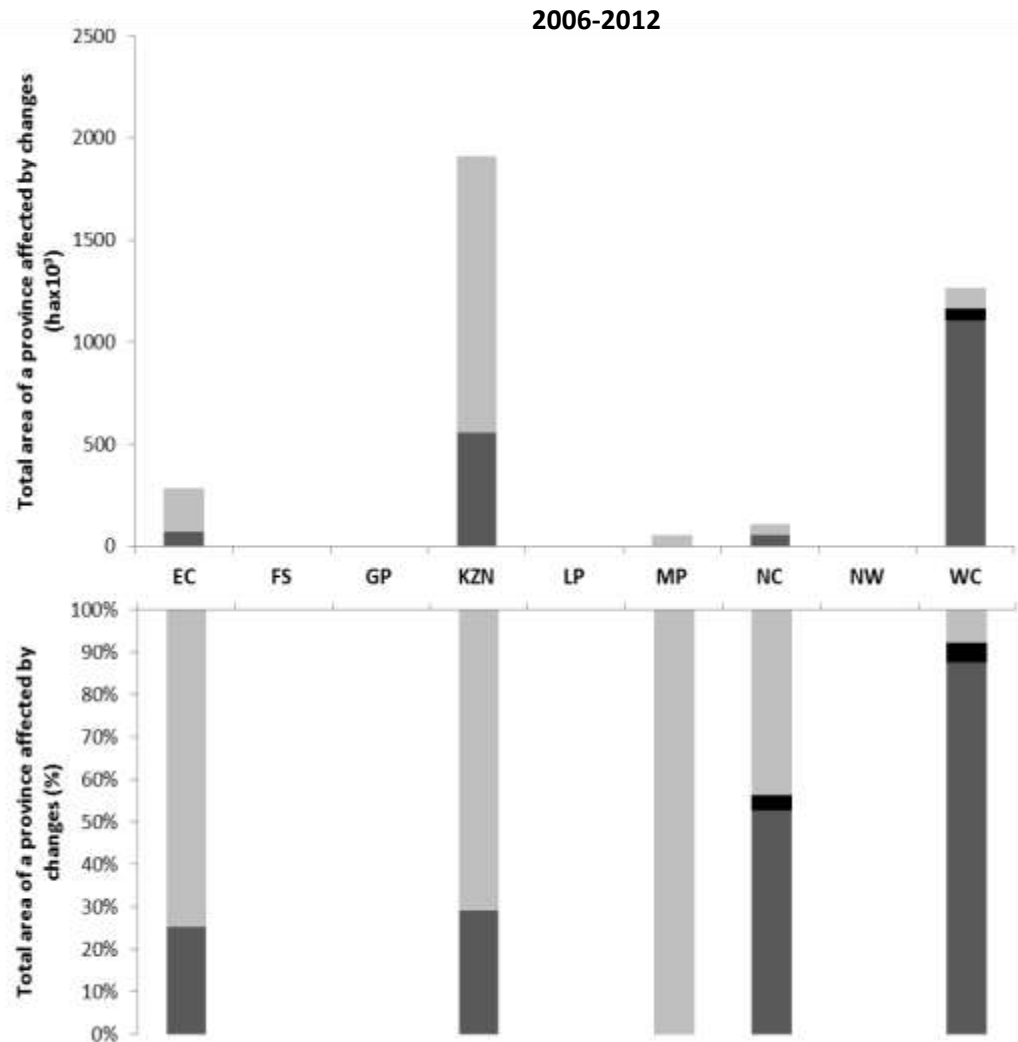
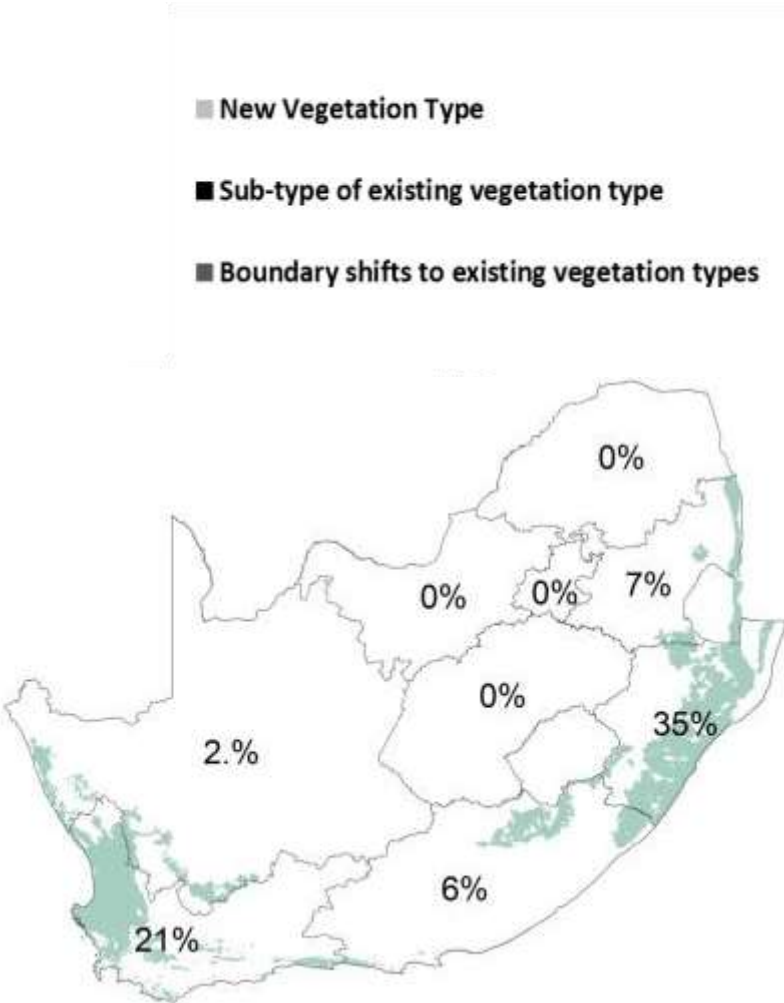
-  New Vegetation Type
-  Sub-type of existing Vegetation Types
-  Expansion of existing Vegetation Type boundary
-  Reduction of existing Vegetation Type boundary

2.9% (69 vegetation types)

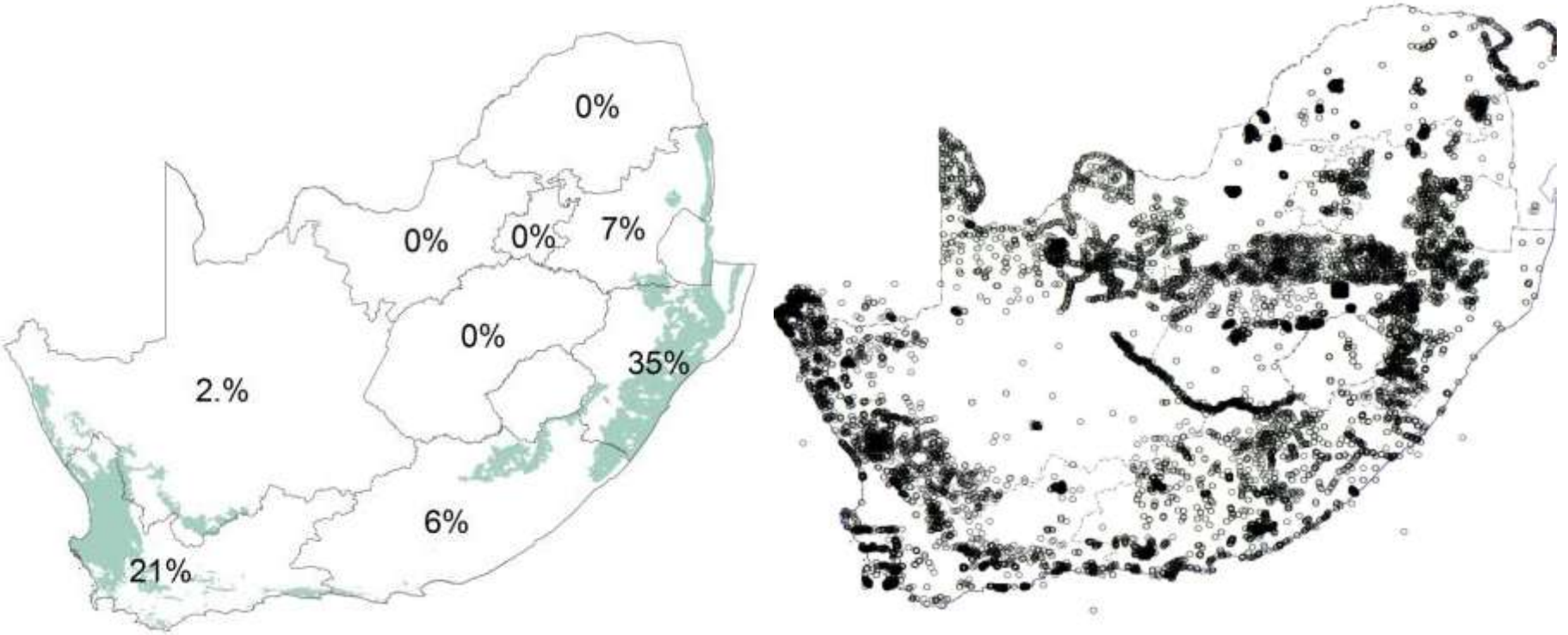




# Changes to the VEGMAP by Province



# Distribution of plot data in the Vegetation database



# Discussion points: Opportunities for improvement

Data

- New members for the VegMap Committee

Management:

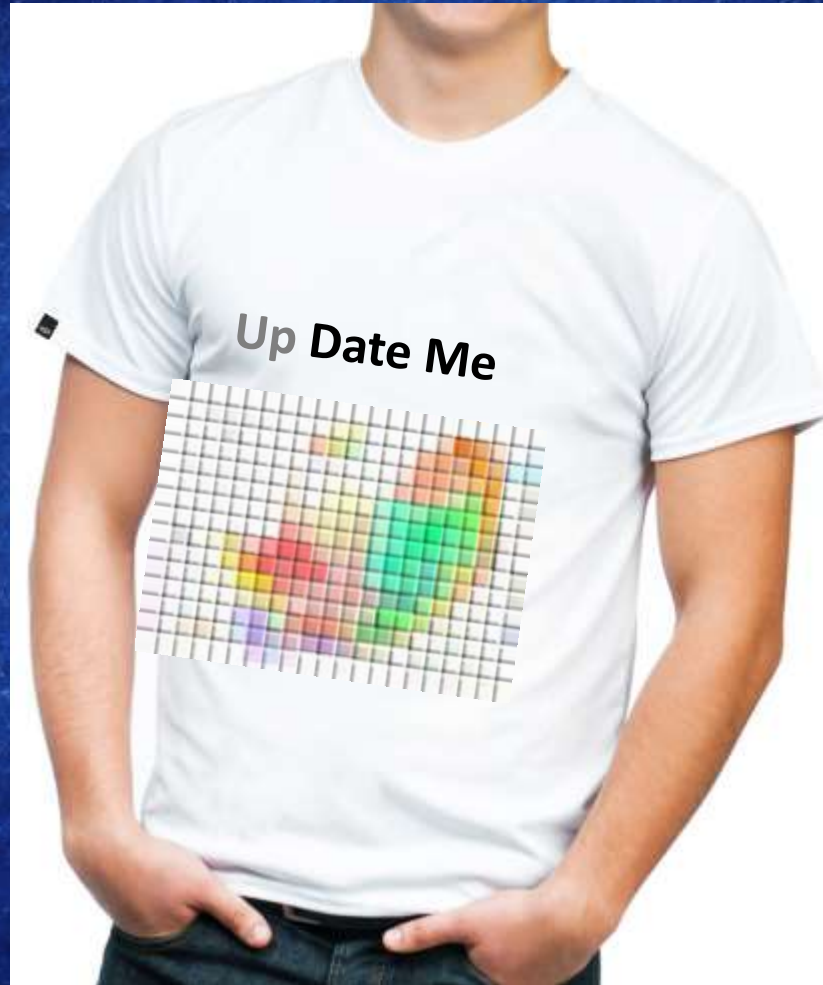
- Simpler process for submitting changes
- Consistency in the format of data submitted for proposed changes

Technical:

- Wetlands in the VegMap
- Forests in the VegMap
- Refining coastline and coastal habitats & integration with the marine classification map
- Strengthening the VegMap with plot data
- Expanding the spatial extent of updates across the country: Capacity building?
- .....



# Latest in the VegMap product range



Thanks