

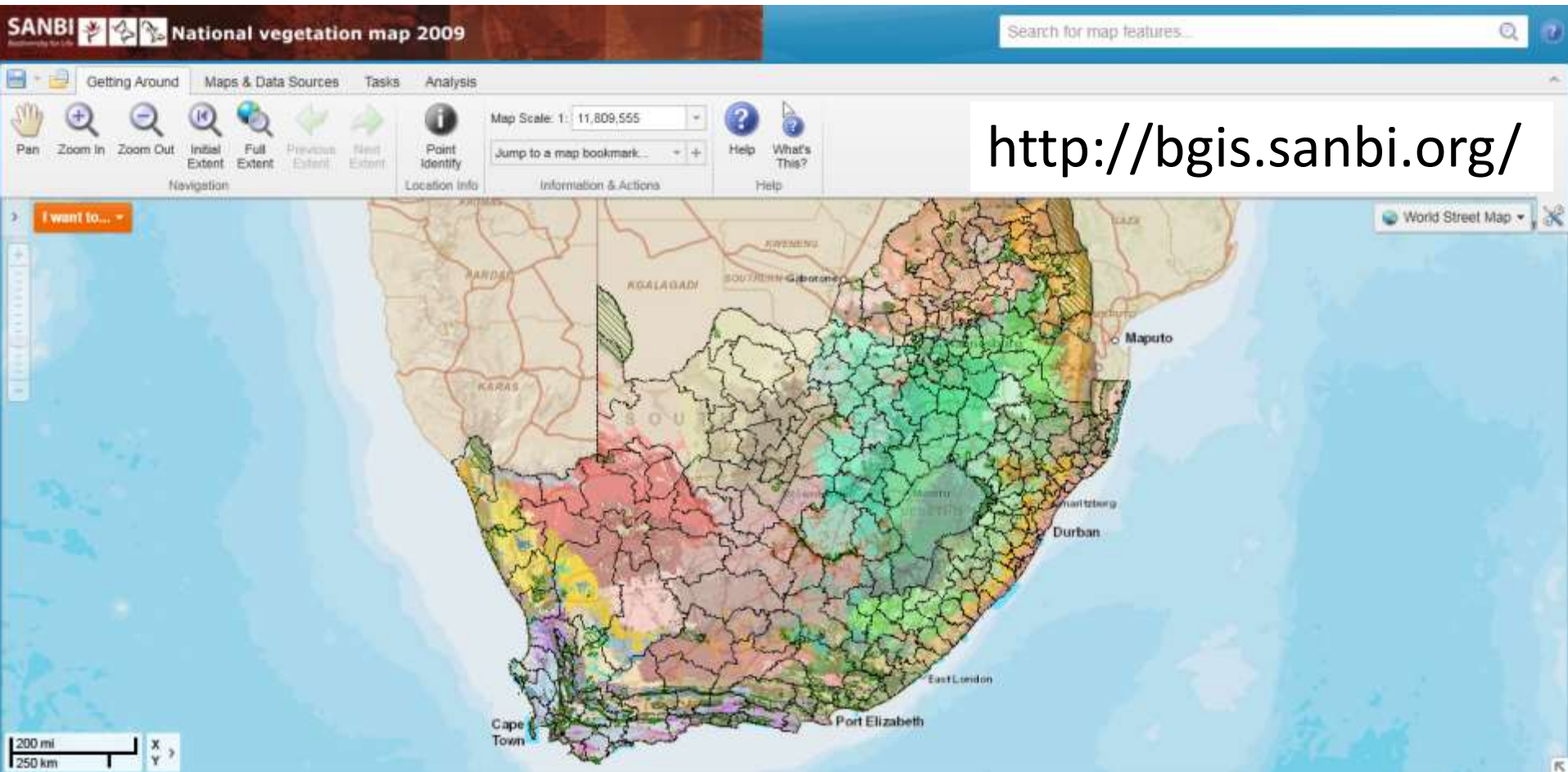


# BGIS: The Road Ahead

Ms Sediqa Khatieb



# Introduction



# Silverlight Viewer & Chrome



The screenshot shows a website with a dark red header containing the text "GIS" and "addo". Below the header is a navigation menu with links for "home", "FAQs", "luds", "projects", "services", and "profile". The main content area is partially obscured by a large blue Microsoft Silverlight installation prompt. The prompt includes the Microsoft logo, the text "To view this content, please install", the Silverlight logo, and a button that says "Click now to install". Below the button, it says "QUICK DOWNLOAD / 30 SECOND INSTALL".

view interactive LUDS Map >>>

Microsoft  
To view this content, please install  
Microsoft®  
Silverlight®  
Click now to install  
QUICK DOWNLOAD / 30 SECOND INSTALL

Use Decision Support (LUDS) in the  
City Sector Plan. To use the LUDS  
function in the "LUDS" tab in the toolbar  
want to ..." menu.  
EC102), Ikwezi (EC103), Ndlambe  
ts with the Addo BSP data for these  
e section of the ECDMA10 which is  
ved.

Critical Biodiversity Areas  
Critical Biodiversity Areas Lookup Layer  
Planning Domain

download  
HTTP  
Critical Biodiversity Areas  
Critical Biodiversity Areas Lookup Layer  
Planning Domain

Critical Biodiversity Areas (CBAs) are terrestrial (land) and aquatic areas which must be safeguarded in their natural or near-natural state as they are critical for conserving biodiversity and maintaining ecosystem functioning. These areas include: (a) natural areas identified as requiring safeguarding in order to meet national biodiversity thresholds (target areas); (b) areas required to ensure the continued existence and



# Silverlight Viewer and Chrome



**what's new**

- [C.A.P.E. Fire Data](#)
- [Vegetation Map of South Africa, Lesotho and Swaziland \(2009\)](#)
- [Additional NFEPA wetlands and rivers information](#)
- [Offshore Marine Protected Area \(OMPA\)](#)
- [Strategic Water Source Areas \(SWSA\)](#)

**tools projects services**

**News flash!**

Our interactive maps no longer functions on Google Chrome. [Learn more...](#) | Should our online maps not function please delete your Internet browser cache [instructions](#).

**UNIVERSITY of the WESTERN CAPE**

**>Welcome to the Biodiversity GIS (BGIS) website**

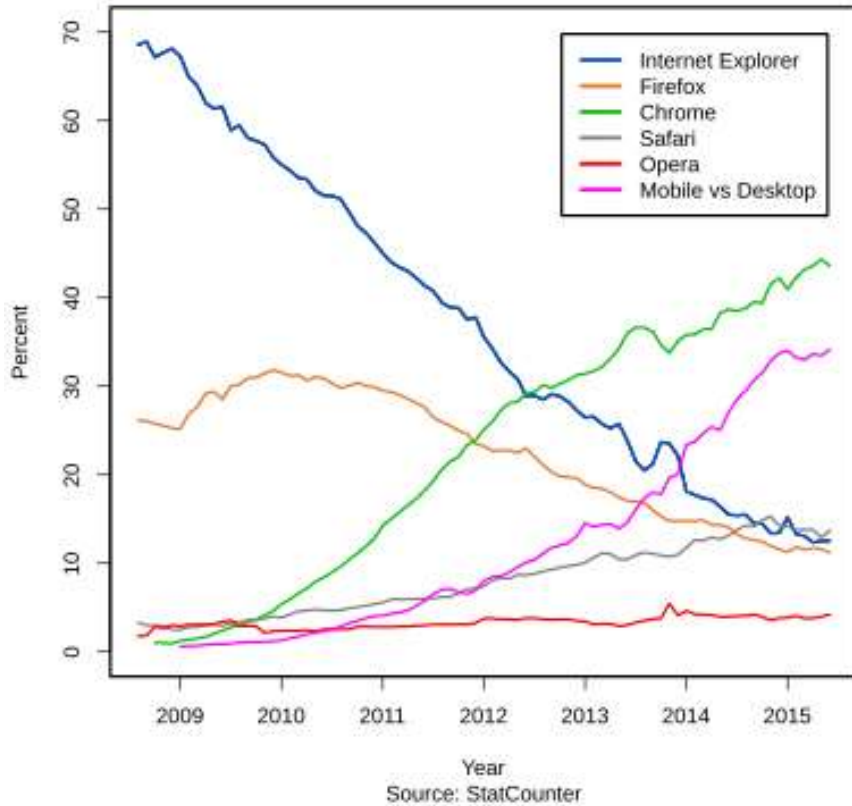
**SANBI**  
Biodiversity for Life  
South African National Biodiversity Institute

We aim to assist you in biodiversity planning and decision making by offering comprehensive and freely accessible spatial biodiversity planning information. We also provide tools, such as interactive mapping tools, in analyzing and applying the available biodiversity information. *We hope you will find our website useful!*



# Google Chrome

Usage share of web browsers



Most used web browser by country as of February 2015 according to StatCounter [StatCounter](#)



© StatsCounter

[https://en.wikipedia.org/wiki/Usage\\_share\\_of\\_web\\_browsers#Wikimedia .28April 2009 to present.29](https://en.wikipedia.org/wiki/Usage_share_of_web_browsers#Wikimedia_.28April_2009_to_present.29)



# HTML5

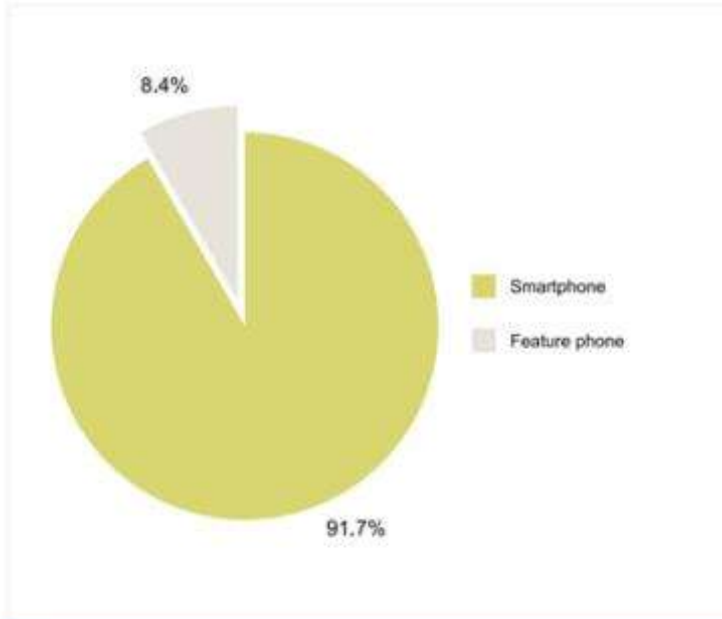
- Language - presenting content Web.
- Transition from Silverlight Viewer
- Benefits of HTML
  - Open standard
  - One solution
  - Offline
  - MOBILE, MOBILE, MOBILE



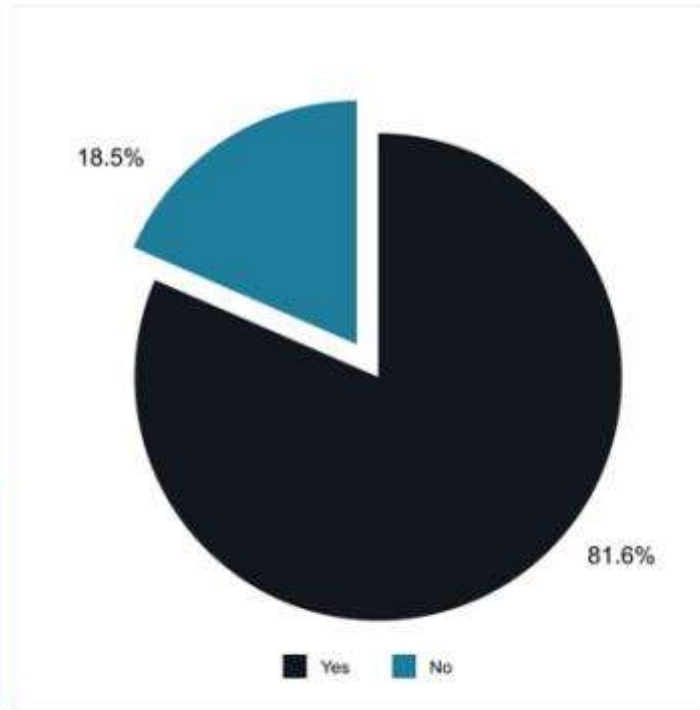
# Mobile



## SMARTPHONE USE IN SOUTH AFRICA



Most of South African Internet users (81.6 percent) use their smartphones to access the Internet whilst 18.5 percent of the users use traditional methods of access.



**A GREAT MAJORITY OF SOUTH AFRICAN INTERNET USERS OWN A SMARTPHONE\***

\*Smartphone is a mobile phone with more advanced computing capability and connectivity than basic feature phones.



# Geocortex & HTML5

## Help Your Users Through the Change

If you'll still be deploying Silverlight apps in the New Year (January-March 2015), you can make things easier for end-users using Google Chrome by using the new default HTML pages we've created to replace existing Geocortex Viewer for Silverlight `Index.html` and `Viewer.html` pages.



A plugin used by this application is not enabled in your browser.  
You may see an option to enable it in your browser's address bar. If not, use an alternate browser such as Internet Explorer®.

*Instead of browser warnings, your users will be presented with a message similar to the above. Once deployed in your application, the [Your Organization] text will be replaced with your familiar application logo.*

To deploy these files, follow these instructions:

1. Backup your existing `Index.html` and `Viewer.html` files in your Geocortex Viewer for Silverlight application directory. By default, this is installed at `C:\inetpub\wwwroot\SilverlightViewer`.
2. Download the [Geocortex Viewer Startup HTML.zip](#) file.
3. Unpack `Geocortex_Viewer_Startup_HTML` into your Geocortex Viewer for Silverlight application directory. Select "yes" when prompted to replace the existing versions.

You will not notice any change in the loading or operation of your Geocortex Viewer for Silverlight applications until the plug-in is blocked by your browser, at which time you will see instructions for enabling the plug-in, or launching the application using a different browser. Note that these files will be automatically included in the next version of Geocortex Essentials.





# Migrating to HTML5



# Rest End Points

The screenshot displays the CapeFarmMapper web application interface. On the left is a 'Layers' panel with categories like Base Map, Demarcation, Infrastructure, and Query Layer. The main map area shows a satellite view of the Eastern Cape region in South Africa, with an 'Overview Map' inset in the top right. A central 'CapeFarmMapper Information' panel lists updates and features. On the right is a 'Navigate' toolbar with navigation icons, a 'Layers' toolbar, and buttons for 'Cadastre Search', 'Draw & Edit Features', 'Manage Features', and 'General'. The bottom right corner features the Western Cape Government logo and a disclaimer.

**Layers**

- Base Map
- Demarcation
- Infrastructure
- Query Layer

Visibility:  off  
Transparency:

Select a layer from the categories below

- Agriculture
- Climate: Rainfall
- Climate: Temperature Means
- Climate: Temperature Maximum
- Climate: Temperature Minimum
- Climate: Evaporation
- Conservation
- Land Cover
- Soils & Geology
- Topography
- Vegetation

**CapeFarmMapper Information**

Updates: April 2015 (press Ctrl+F5 to reload page)

- New Basemap layers:**
  - NGI Topocadastral
  - Esri Streets
- New Overlay layers:**
  - Surveyor-General: February 2015 updates
  - Agriculture: Livestock farms
  - Conservation: Critical Biodiversity Areas (2014)
  - Land Cover: 2013/14 (DEA)
  - Topography: Slope %
- Tools & Functions:**
  - General: Geolocation
  - Printing: A2 page size
  - Printing: print at scale
  - Printing: Google maps printing enabled
  - Query Popup: Surveyor-General diagrams download links
  - Query Popup: Share location or map scene

Updates: October 2014 (press Ctrl+F5 to reload page)

- New Basemap layers:**
  - SPOT5 (2009-2012)
  - NGI Aerial Photography (2008-2012)
  - MapBox Terrain
  - Reference Layer (roads and places) for SPOT and NGI imagery
- New Overlay layers:**
  - Demarcation: SG Administrative Regions
  - New Infrastructure Category: all agriculture infrastructure from the 2013 Fly-over Project
  - Agriculture: Agriculture Enterprises of South Africa

**Overview Map**

Zoom Scale: 10x 20x 40x

**CapeFarmMapper**

**Navigate**

**Layers**

**Cadastre Search**

**Draw & Edit Features**

**Manage Features**

**General**

Western Cape Government  
Agriculture

5 Microsoft Corporation © 2015 HERE Terms of Use

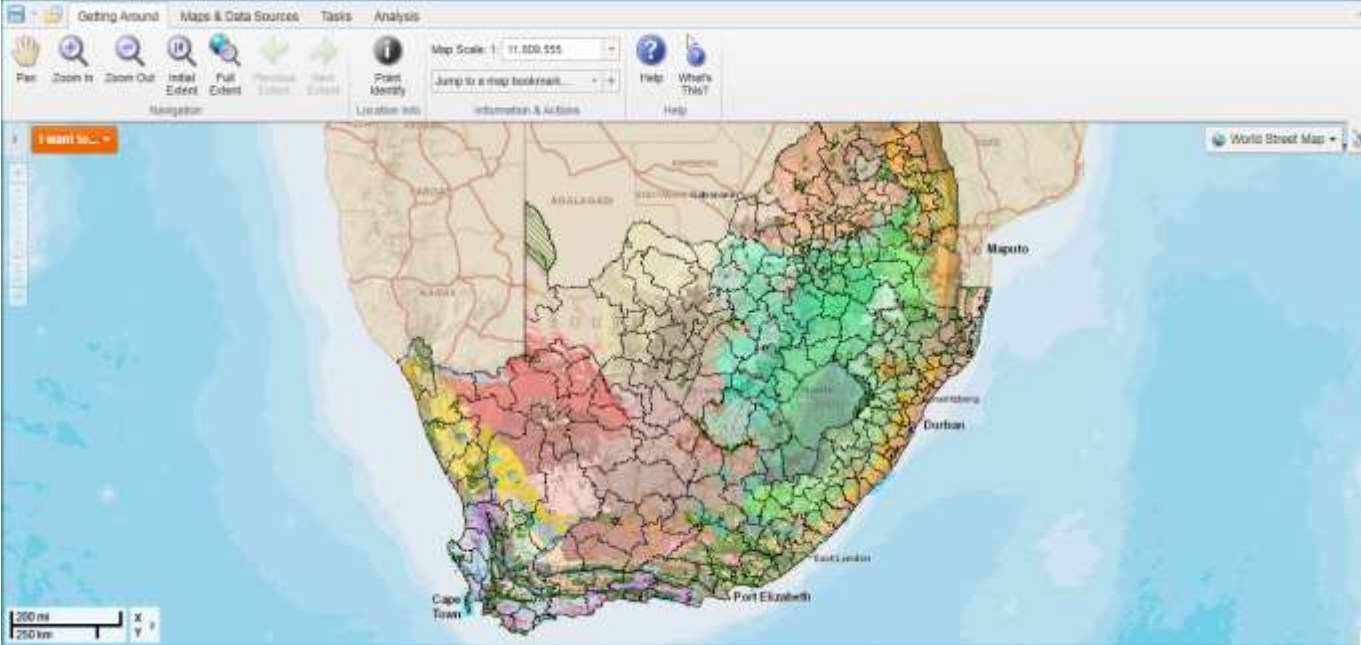
LIABILITY DISCLAIMED. USE AT OWN RISK.

<http://gis.elsenburg.com/apps/cfm/>



# SANBI architecture

## Biodiversity data



Integration with  
SANBI's  
Biodiversity  
Advisor website  
[http://biodiversity  
advisor.sanbi.org/](http://biodiversityadvisor.sanbi.org/)  
Different look and  
feel




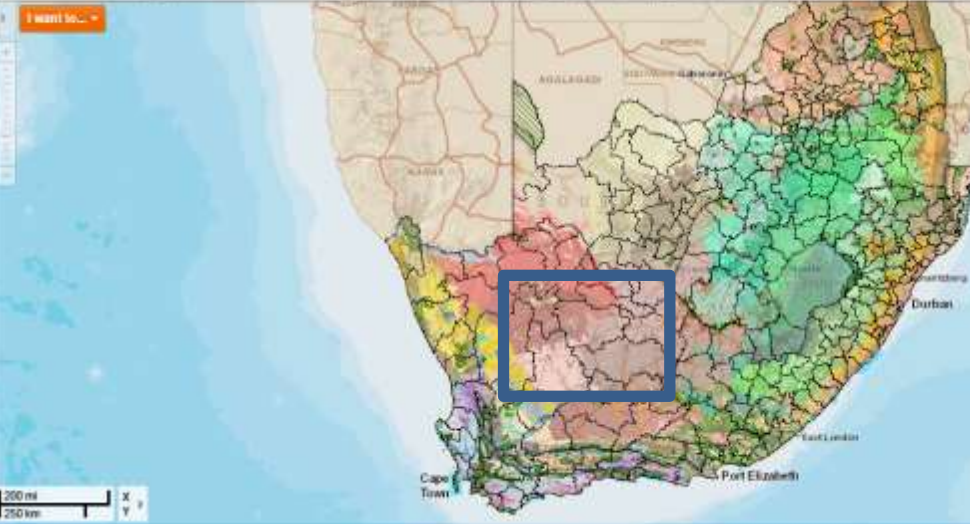
# SANBI architecture

Planning & Assessment | Biodiversity & Industry | Checklists & Modelling | Learning Networks | Biodiversity

**Biodiversity data**

Getting Around | Maps & Data Sources | Tasks | Analysis


 Map Scale: 1:11,800,555  
 Jump to a map bookmark...



200 mi 250 km

Full Name	Scientific Name	Regional Red List Status_2014
Wattled Crane	<i>Bugeranus carunculatus</i>	CR
White-winged Flufftail	<i>Sarothrura ayresi</i>	CR
African Marsh-Hamier	<i>Circus ranivorus</i>	EN
Grey Crowned Crane	<i>Balearica regulorum</i>	EN
African Grass-Owl	<i>Tyto capensis</i>	VU
Greater Painted-snipe	<i>Rostratula benghalensis</i>	VU
Striped Flufftail	<i>Sarothrura affinis</i>	VU
Rosy-throated Longclaw	<i>Macronyx ameliae</i>	NT



# Metadata

## GOVERNMENT NOTICE GOEWERMENTSKENNISGEWING

No. 9

(a) Access is a fundamental issue in the exchange of data. Information becomes valuable when it is accessible to the user. All base data set custodians will capture **metadata** for their data holdings. This will provide

015

(f) Any base data set(s) that is disclosed or made available to users must include the metadata component.

(g) Base data set custodians should ensure that their **metadata** is available to the public by establishing a node at the Department's Electronic Metadata Catalogue, or by making their records available to the Department for inclusion in the Catalogue.



# QUESTIONS



[bgishelp@sanbi.org.za](mailto:bgishelp@sanbi.org.za)

