



# ***North West Biodiversity Sector Plan 2014***

*Ray Schaller & Dr. Phillip Desmet*



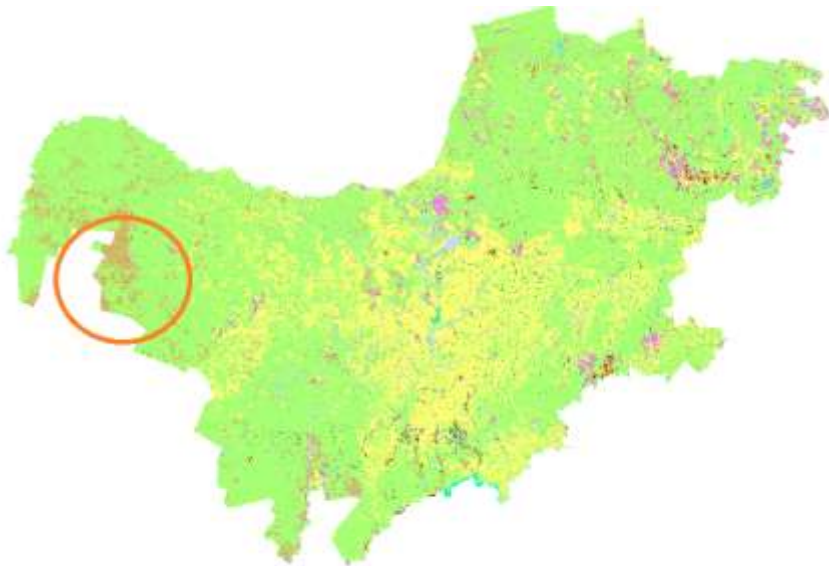
# ***The North West BSP2014***

- Service Provider appointed in November 2014
- Due date for completion: November 2015
- Extensive Stakeholder Participation
- Project Steering Committee:
  - National Departments i.e. Department of Water Affairs
  - District and Local Municipality Representatives, i.e. Environmental Officers/ Town Planners
  - Provincial Department Representatives
  - Taxon specialists and NWU experts
- BSP2014 will be incorporated into the update of the PSDF to be finalized in June 2016

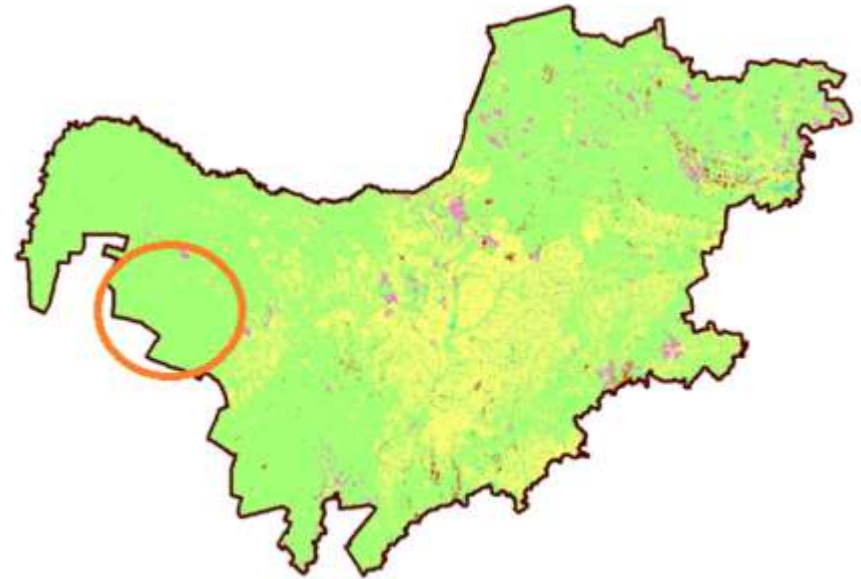
# Data:

- BSP2014 Baseline Datasets include:
  - ❖ DEA's 2013/2014 National Land Cover Map developed by GTI
  - ❖ Updated National Vegetation Map
    - (Geology and Land Facets Datasets)
  - ❖ Freshwater Component:
    - RQS-DWA's Biomonitoring Data
    - Updated Wetlands Layer (Collins, 2015)
  - ❖ Updated Species information
  - ❖ Socio-Economic Data from District and Municipal SDFs and EMFs

## 2006 Provincial Land Cover (SPOT5; GTI)



## 2013/2014 National Land Cover (LANDSAT 8; GTI)



Approx. 33% Transformed.

NB. Area classified degraded down on previous years due to Kalahari sands being classified as natural instead of degraded



# Issues:

## ➤ Protected Areas Layer:

- Poor record keeping of the status of Conservation areas in the Province, i.e. Private Nature Reserves, Municipal Reserves, Conservancies and Game Farms.
  - E.g. The PACA database has recorded a large number of Private Nature Reserves that the Province has no record of.
  - What actually constitutes a game farm. In many cases the Farm Name has been recorded as a game farm and not a particular portion number.

## ➤ National Vegetation Map, e.g. what constitutes grasslands vs what constitutes Thornveld.

- The vegetation map is being revised based on the underlying geology. The land types layer and 1:250 000 geology layer have been used to realign the vegetation types.