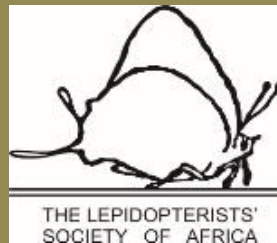


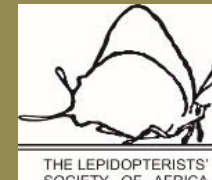
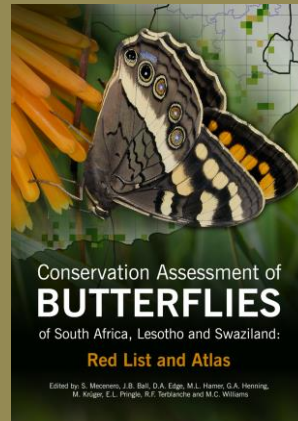
LepSoc's contribution to Foundational Biodiversity Information

Dave Edge & Silvia Mecenero



SABCA

(Southern African
Butterfly Conservation Assessment)

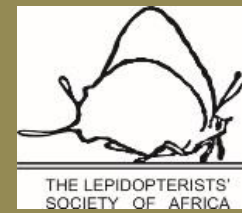


SALCA

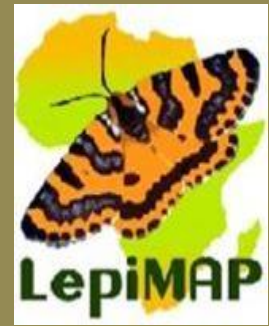
(Southern African
Lepidoptera Conservation Assessment)



- Focusing on 154 taxa of special concern.
- Verifying data; targetted field work.
- Conservation assessments updated (LepSoc members).
- SANBI – NBA 2018.
- Moths included for first time.

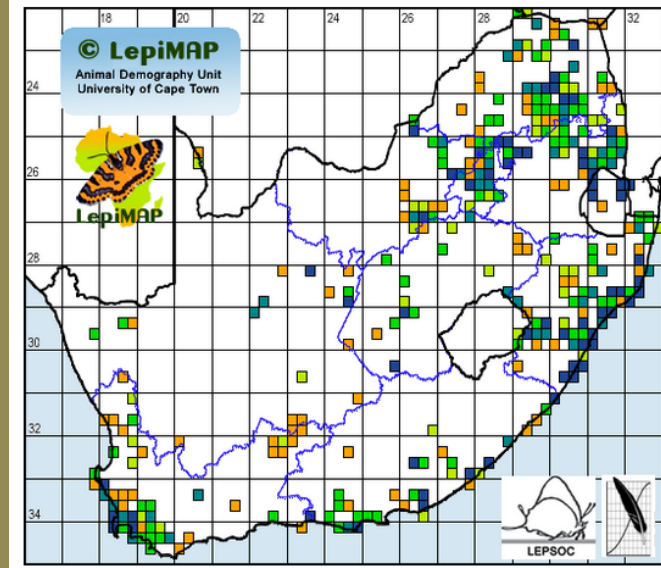


LepiMap

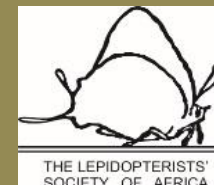


Number of species*	Symbol	No. QDSs	% QDSs
1	Orange square	85	4.2
2	Yellow square	42	2.07
3 - 6	Light green square	82	4.05
7 - 11	Dark green square	45	2.22
12 - 112	Dark blue square	62	3.06

* ranges selected according to the closest percentiles for 5 categories.



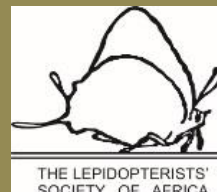
	Records	Taxa	Observers	Grid cells (Africa)	Grid cells (SA region)
This year	9117	419	187	383	321



BioGaps

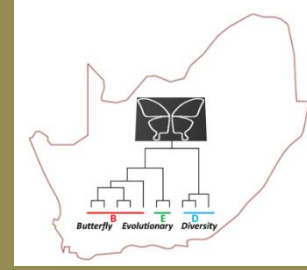


- Part of the SEA for the Karoo Basin.
- Lepidoptera one of 11 taxon groups being studied.
- Surveys will be only for butterflies.
- 30 mandatory sites and 20 optional sites.
- Data already available for some of these sites.
- Survey protocol has been prepared.
- Will allocate “clusters“ of sites to surveyors to minimise travel needed.
- Camping (on farms) to reduce accommodation costs.
- Timing critical – end October to mid November best.



BED project

(Butterfly Evolutionary Diversity)



- Led by Jonathan Colville (SANBI) and Dave Edge (LepSoc).
- Map patterns of phylogenetic diversity and species richness.
- Aims to cover all South African butterflies.
- Short term goal to get at least one example of each genus.
- Whole specimens or legs preserved for DNA analysis.
- Possible to use cabinet specimens as well.
- 100 genes to be sequenced by South African scientist at University of California to develop phylogenetic trees.
- Samples to be collected during SALCA/ BioGaps surveys and other surveys by LepSoc members.

