



Purpose, programme and logistics

Overview

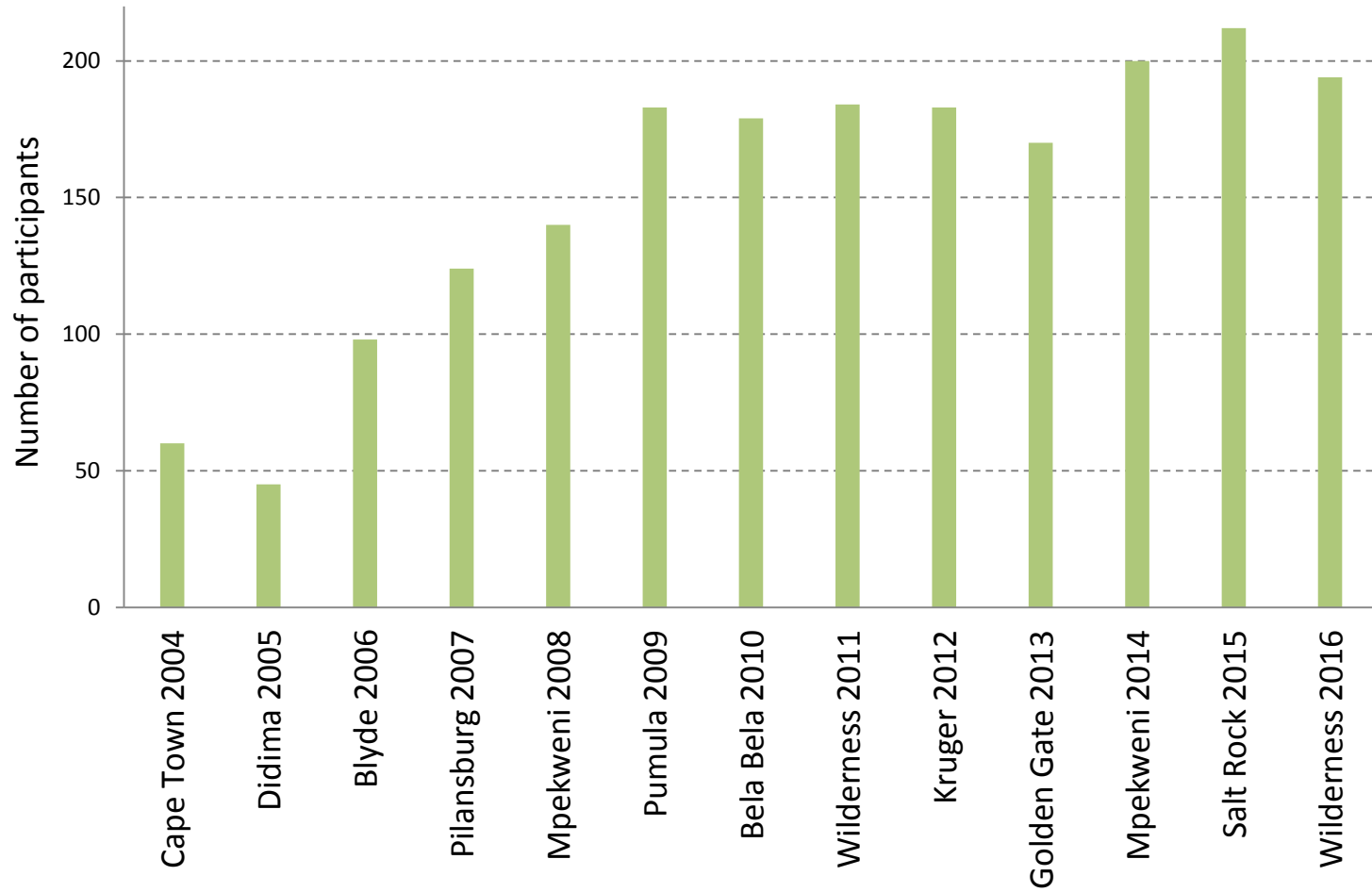
- A brief history
- Forum objectives
- Why we are here?
- Key themes
- Programme overview
- Housekeeping



A brief history

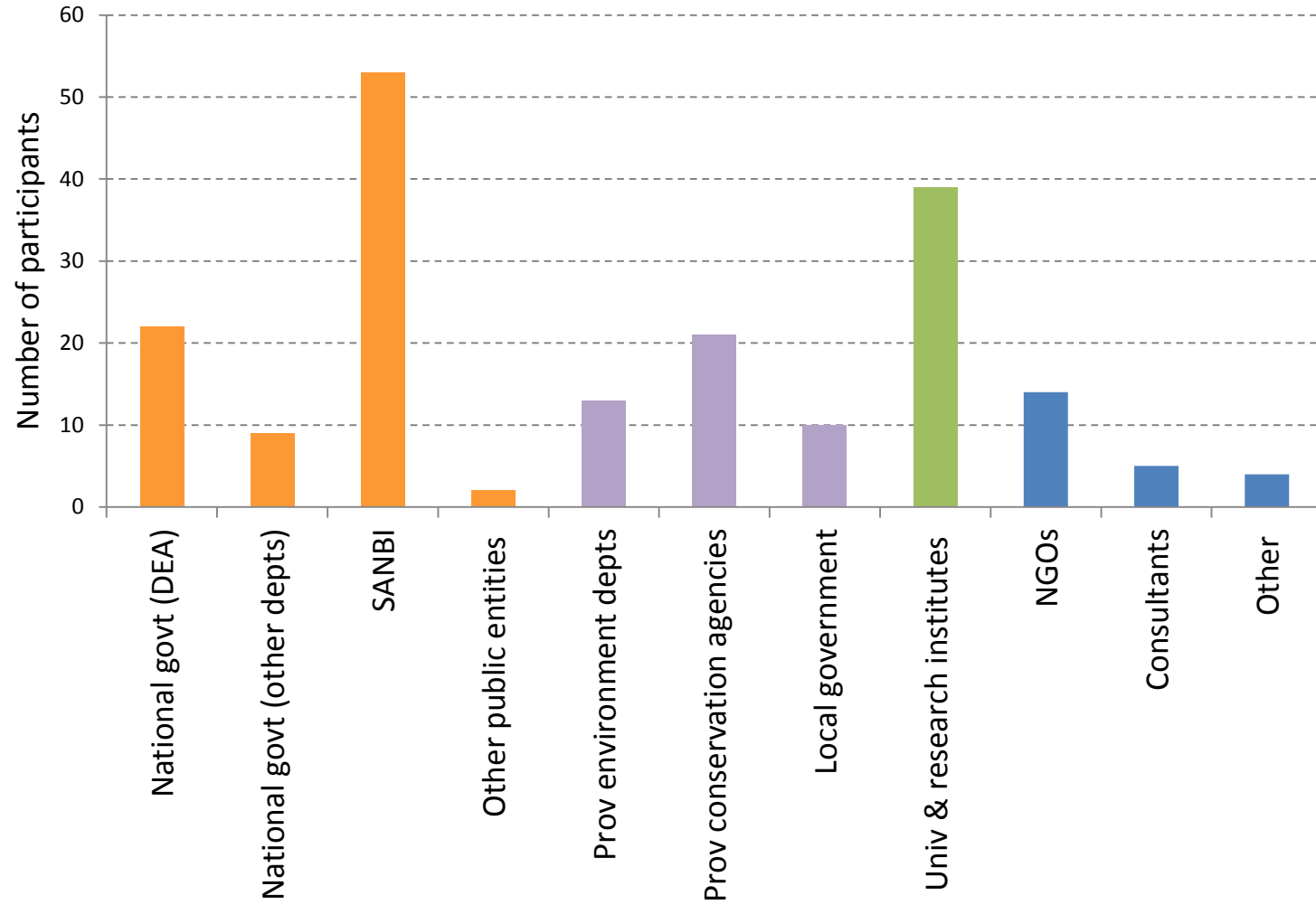


Forum growth 2004 - 2016





Forum representation 2016



Forum objectives

- Share lessons learnt from systematic biodiversity planning initiatives, including their implementation effectiveness
- Introduce aspects of advanced biodiversity planning
- Provide case studies that highlight the challenges of planning for implementation
- Contribute to guidelines and standards for systematic biodiversity planning
- Build networks for better communication among the various projects and agencies in the country
- Develop capacity in the biodiversity planning sector through sharing of experiences and the introduction to new innovations

Capacity Building

- Continuous contact with the biodiversity planning community of practice
- Learning by going through the process



Why we are here?



Systematic biodiversity planning

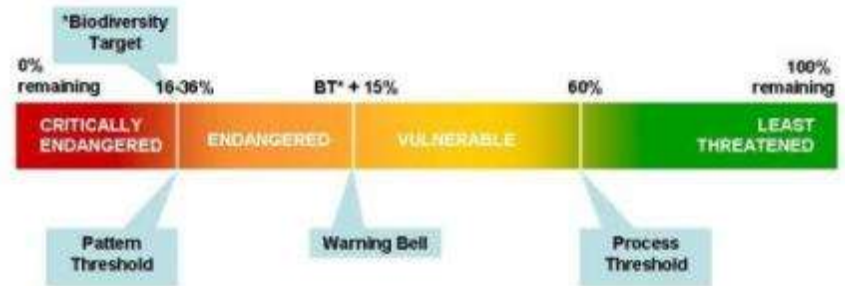
WHAT?

Biodiversity pattern

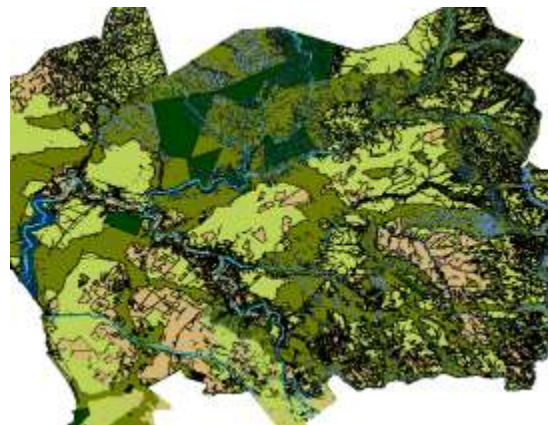
Ecological processes



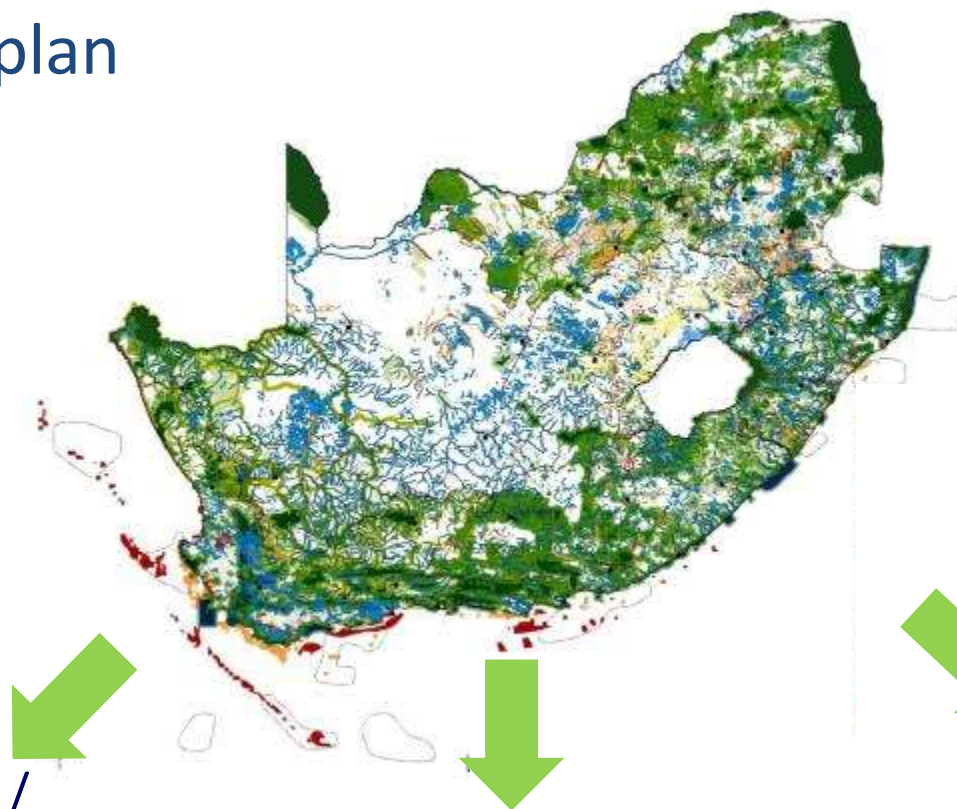
HOW MUCH?



WHERE?



3-way action plan



Reduce loss / maintain in good condition

- Land use planning
- EIAs
- Mining guideline
- Classification of water resources

Protect

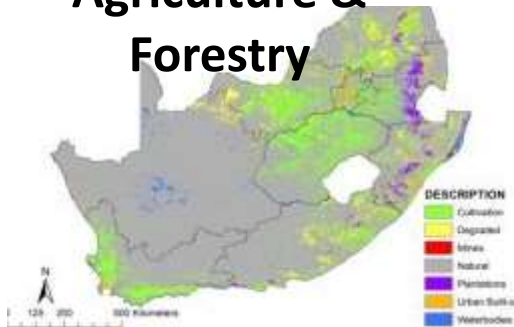
- PA expansion strategy
- Biodiversity stewardship
- Management effectiveness in PAs

Restore

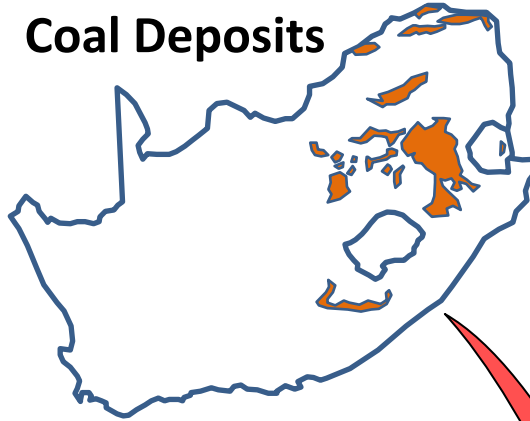
- Env public works
- Spatial info to inform broader NRM work
- Pilots to show value of ecol infrastructure

Transforming and optimising development

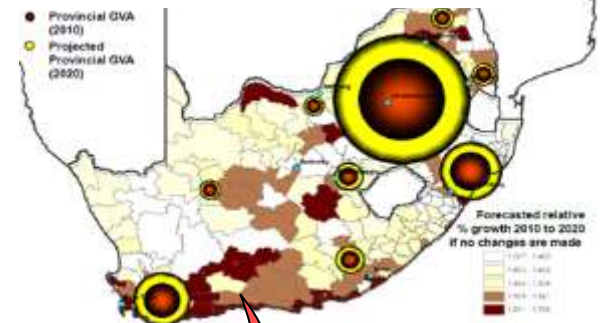
Agriculture & Forestry



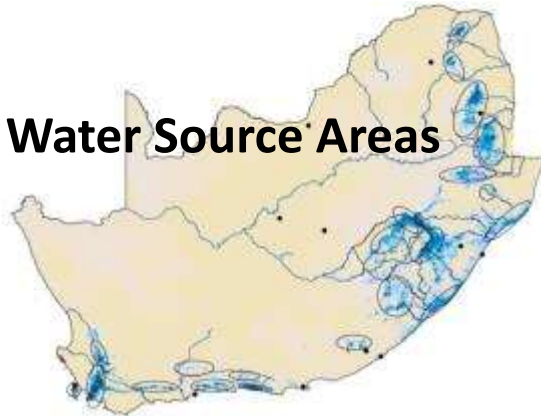
Coal Deposits



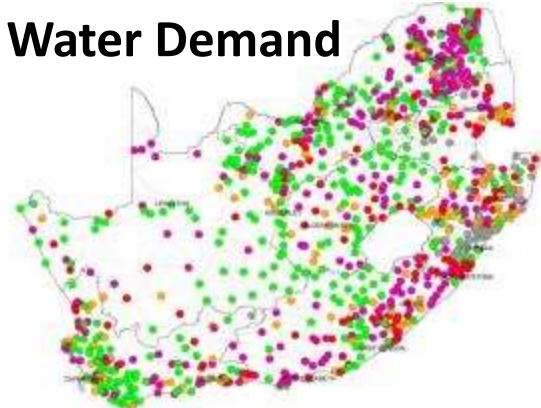
Economic Development



Water Source Areas



Water Demand



**Strategic
development
planning**



Key theme

Foundations for biodiversity assessments



Plenary and parallel sessions

- Uptake of spatial information into environmental assessment initiatives
- Applying spatial data for the management of ecological infrastructure
- Provincial biodiversity planning updates and technical advances
- Assessing and mapping ecological condition
- Implementing biodiversity plans: challenges and opportunities
- Technical advances in national assessments and planning
- Spatial data and information systems related to biodiversity assessments and planning

Workshops and discussions

- Intergovernmental Science-Policy Platform on Biodiversity and Ecosystem Services (IPBES) Africa Assessment
- Marine spatial planning in South Africa: legislation, science, and who's doing what?
- Freshwater component of the National Biodiversity Assessment (NBA) 2018
- National Status Report on Biological Invasions

Informal discussions

- Publishing our work
- Building capacity: the Forum as a learning process
- A proposed terrestrial biodiversity index aimed at national level reporting
- The implications of wetland delineation legislation for forestry and agriculture



Programme overview: Tuesday

Programme overview: Tuesday 7 June 2016	
Time	Venue: Wilderness Hotel
11:00–13:00	REGISTRATION Please bring posters, maps, brochures and other printed material you would like to display
13:00–14:00	LUNCH
Time	Venue: Palm
14:00–14:10	Welcome and introduction
14:10–14:30	Purpose of the Forum and programme overview
14:30–15:00	Keynote address: Grasslands in trouble Prof. William Bond (SAEON)
15:00–15:30	Keynote address: The Intergovernmental Science-Policy Platform on Biodiversity and Ecosystem Services (IPBES) Africa Assessment: an overview Dr Emma Archer van Garderen (CSIR)
15:30–16:00	TEA
16:00–17:00	Plenary: Strengthening spatial biodiversity assessment and planning
Time	Venue: The Lounge, Wilderness Hotel
17:30–19:00	Launch of Mapping Biodiversity Priorities and official welcome by SANBI CEO Dr Tanya Abrahamse Interactive poster and exhibition display
19:00	DINNER

Programme overview: Wednesday

Programme overview: Wednesday 8 June 2016		
Time	Venue: Palm	
08:30–08:55	Plenary address: Historical imagery as a tool for condition assessment: different or degraded? Prof. Timm Hoffman (UCT)	
08:55–10:30	Plenary: Uptake of spatial information into environmental assessment initiatives	
10:30–11:15	GROUP PHOTO AND TEA	
11:15–12:30	Plenary: Uptake of spatial information into environmental assessment initiatives	
12:30–13:30	LUNCH	
Time	Venue: Palm	Venue: Yellowwood
13:30–15:00	Intergovernmental Science-Policy Platform on Biodiversity and Ecosystem Services (IPBES) Africa Assessment	Applying spatial data for the management of ecological infrastructure
15:00–15:30	TEA	
Time	Venue: Palm	
15:30–17:30	Plenary: Provincial biodiversity planning updates and technical advances	
Time	Venue: TBC	
17:30–19:00	Informal discussion: Publishing our work	
19:00	DINNER	

Programme overview: Thursday

Programme overview: Thursday 9 June 2016		
Time	Venue: Palm	
08:30–10:30	Plenary: Assessing and mapping ecological condition	
10:30–11:00	TEA	
Time	Venue: Palm	Venue: Yellowwood
11:00–13:00	Implementing biodiversity plans: challenges and opportunities (local and provincial experiences)	Marine spatial planning in South Africa: legislation, science, and who's doing what?
13:00–14:00	LUNCH	
Time	Venue: Palm	Venue: Yellowwood
14:00–16:00	Implementing biodiversity plans: challenges and opportunities (national perspectives and lesson learned)	Freshwater component of the National Biodiversity Assessment (NBA) 2018
16:00–16:30	TEA	
Time	Venue: TBC	Venue: TBC
16:30–18:00	Informal discussion: A proposed terrestrial biodiversity index aimed at national level reporting.	Informal discussion: The implications of wetland delineation legislation for forestry and agriculture
19:00	DINNER	

Programme overview: Friday

Programme overview: Friday 10 June 2016		
Time	Venue: Palm	
08:30–10:00	Plenary: Technical advances in national assessments and planning	
10:00–10:30	TEA	
Time	Venue: Palm	Venue: Yellowwood
10:30–12:00	National Status Report on Biological Invasions	Spatial data and information systems related to biodiversity assessments and planning
Time	Venue: Palm	
12:00–12:30	Evaluation, thanks and close of 2016 Forum	
12:30	LUNCH	

Note to presenters

- Please load presentations 15 minutes before start of session i.e. during tea or lunch breaks
- **Please keep to time (very NB)**
- Timekeepers and chairs will be strict!



Housekeeping

