



Biodiversity Offsets : Losses and (potential) Gains

Moore Norma Malatji

m.malatji@sanbi.org.za

Outline

- Introduction
- Method
- Statistics
- Progress
- Way forward



What are **Biodiversity Offsets**

Measurable conservation outcome resulting from actions to compensate for residual negative impacts of a development project on biodiversity.



Ongoing and iterative consideration of alternatives to project location, siting, scale, layout, technology and design

AVOID

MINIMIZE

REPAIR/RESTORE

Impacts after above mitigation measures have been taken into account (i.e. 'residual' impacts)?

OFFSET



Biodiversity Offset Register

- Unique Identifier
- Development type
- Developer
- EAP
- Title



Impact site

- Trigger for the Biodiversity Offset
- Ecosystem Impacted
- Size



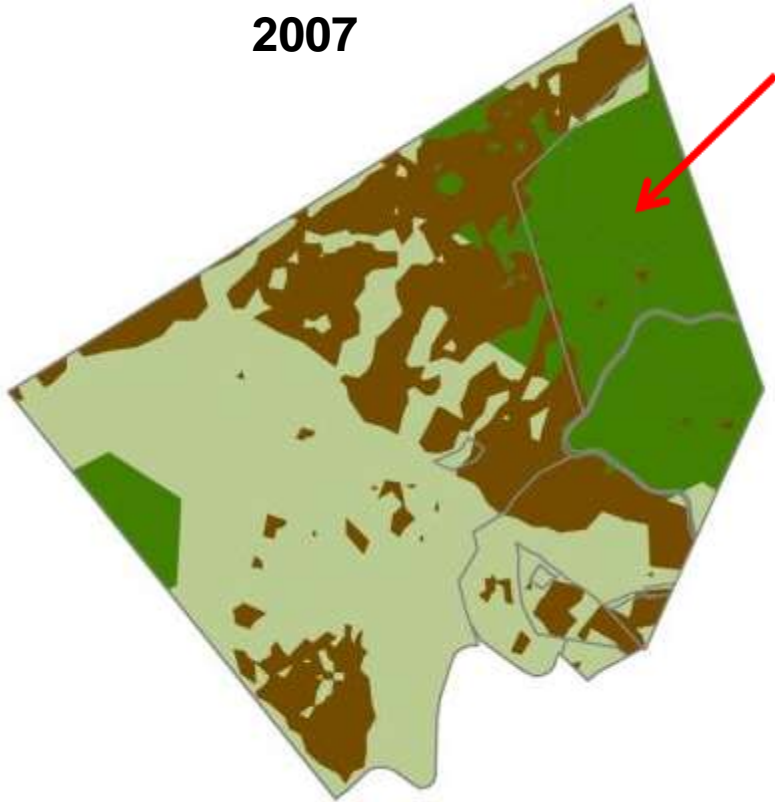
Biodiversity Offset Site

- Type (e.g. monetary, research, protected area)
- Size
- Ecosystem and threat status

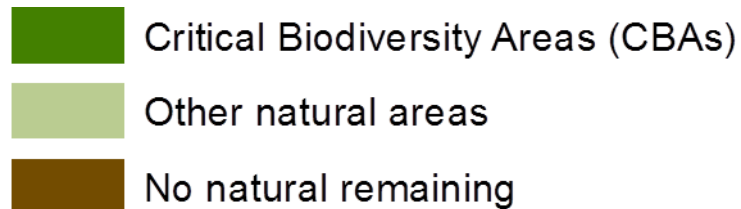
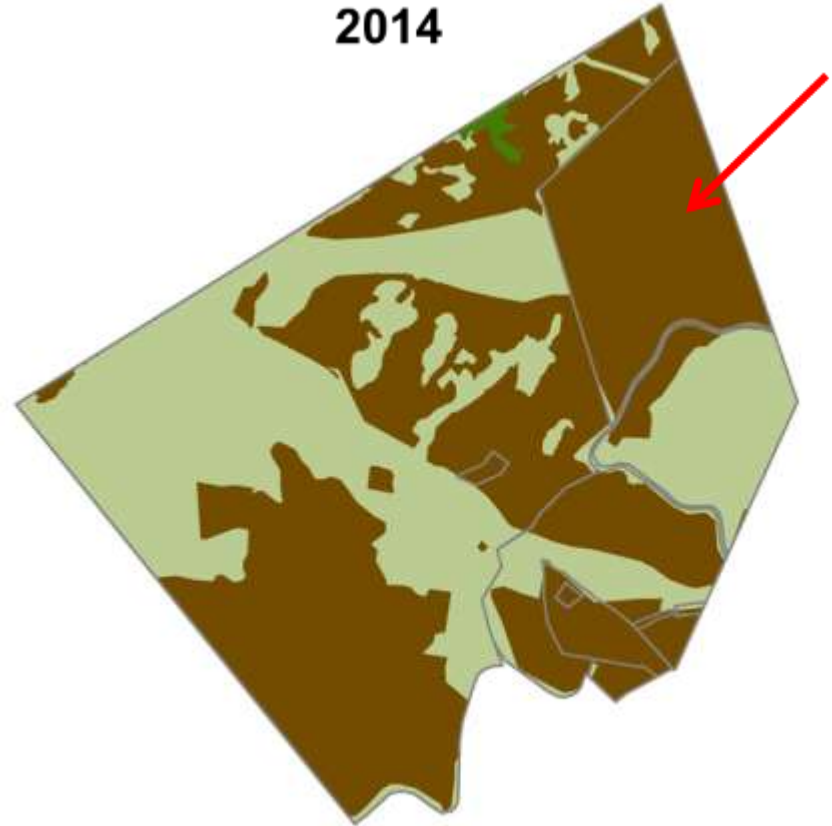


The development of a residential township (MPMP08-001)

2007



2014

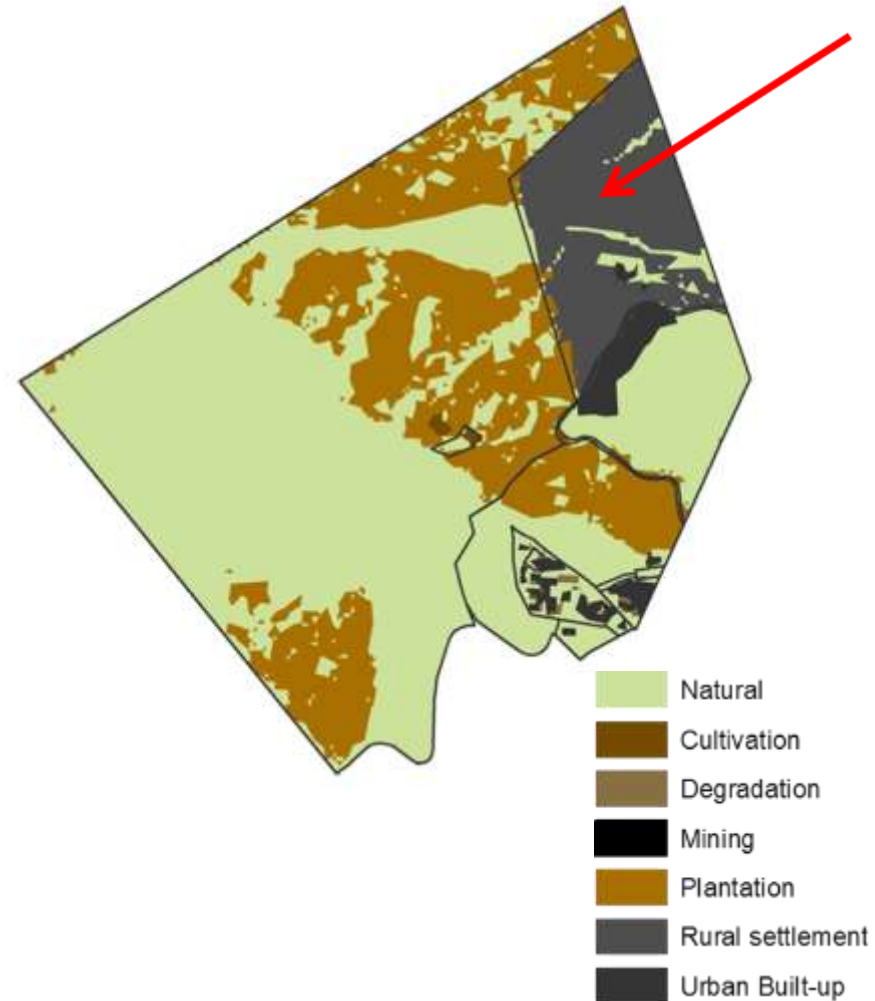


Development Site (2008)

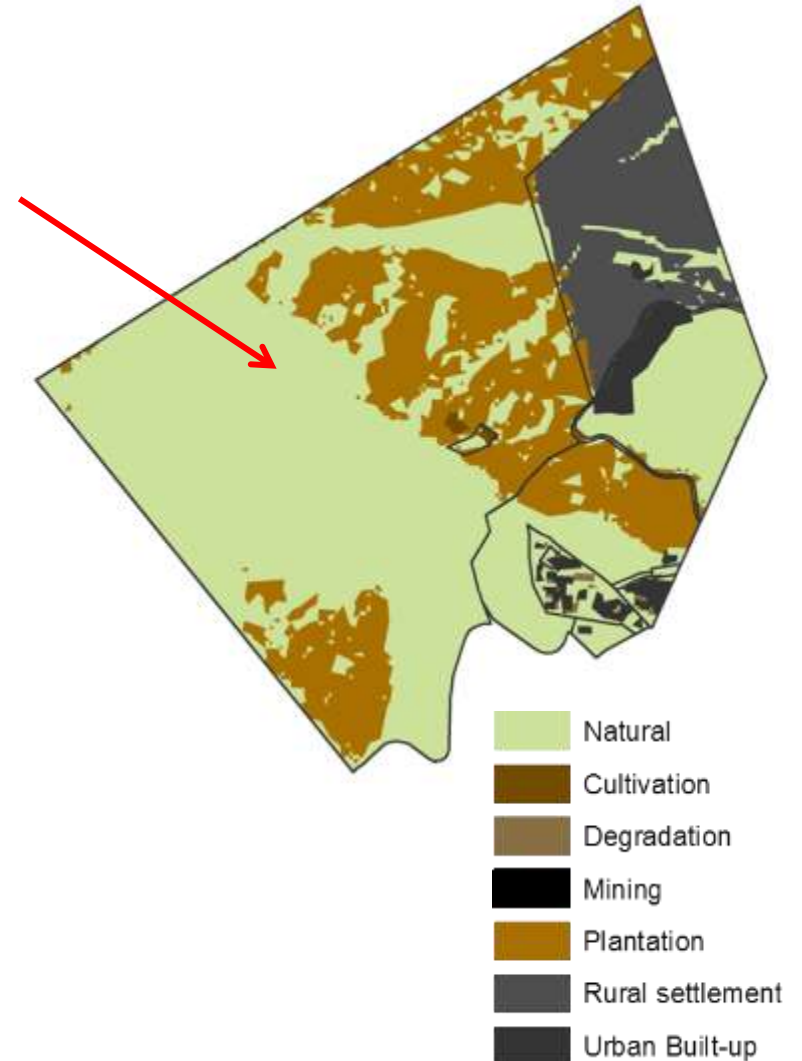


Uniq_ID	FARMNAME	SG_CODE	PORTION	Farm Area(ha)	BIOME	NBA_NAME	VEGTYPEID	PROTEC_LEV	Veg_Area	Eco_status	Natural	Irreversably modified
MPMP08	DINGWELL	T0JT00000000	2	245	Savanna Biome	Legogote Sour Bushveld	900	Poorly protected	245	VU	223	21

Development site (2016)



Expected offset receiving area (2016)





Status	No of records	Authorised loss for development	Offset Gains (Potential)	Actual loss	Actual gains (on SAPAD)
Offsets captured spatially	27	35 070 ha	23 257 ha	?	0 ha
offsets with no spatial information	18				
Register entries till to be verified	25				
Total	70				

Way Forward

- Source outstanding offsets authorisations (NC, KZN, LP)
- Capture outstanding records
- Source archived farm data
- Do additional verification of developments
- Analysis per province (losses vs gains)

Additional Statistics

