



# Overview of provincial biodiversity planning

# Overview

- Where things are at
- A quick tour of the provinces
- Community of practice



# Where we are at

- Nine provinces with spatial biodiversity plans or in the process of developing spatial biodiversity plans
  - Protected Areas
  - Critical Biodiversity Areas (CBAs)
  - Ecological Support Areas (ESAs)
  - Other Natural Areas



# Where things are at

- Plans completed:
  - North West Biodiversity Sector Plan 2016
  - Mpumalanga Biodiversity Sector Plan 2014
  - Western Cape Biodiversity Framework Layer 2010 updated 2014 (currently being updated)
  - Limpopo Biodiversity Assessment 2013
  - Gauteng Conservation Plan 3.3 (C-Plan 3.3) 2011
  - KwaZulu-Natal Biodiversity Assessment 2010 (currently being updated)
  - Eastern Cape Biodiversity Conservation Plan 2008 (currently being updated)
- Plans underway:
  - Free State
  - Northern Cape

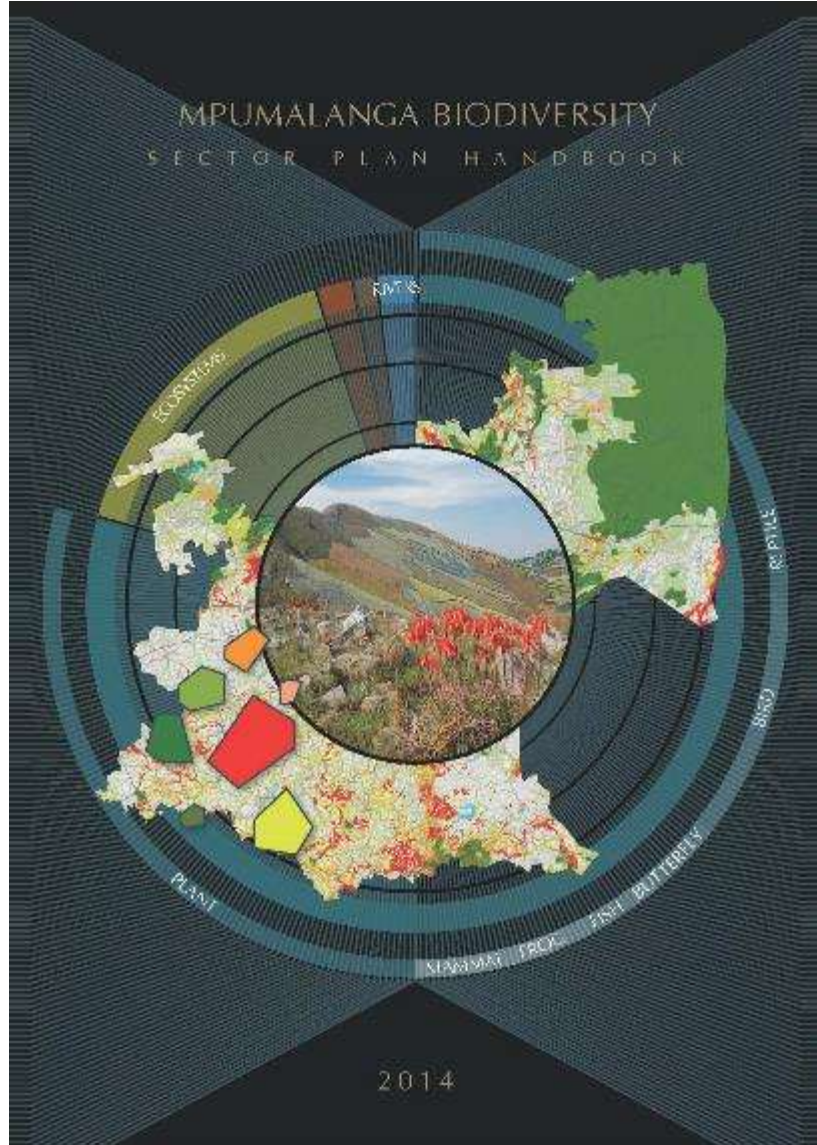
# A quick tour of the provinces



# North West

## North West Biodiversity Sector Plan 2016

# Mpumalanga



# Western Cape

## Western Cape 2016 Biodiversity Plan

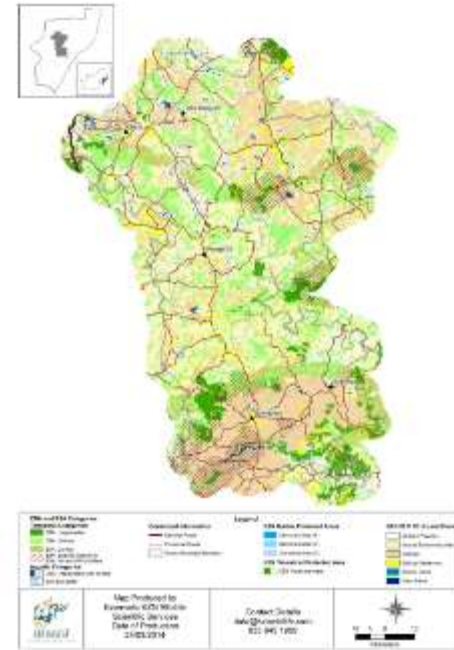
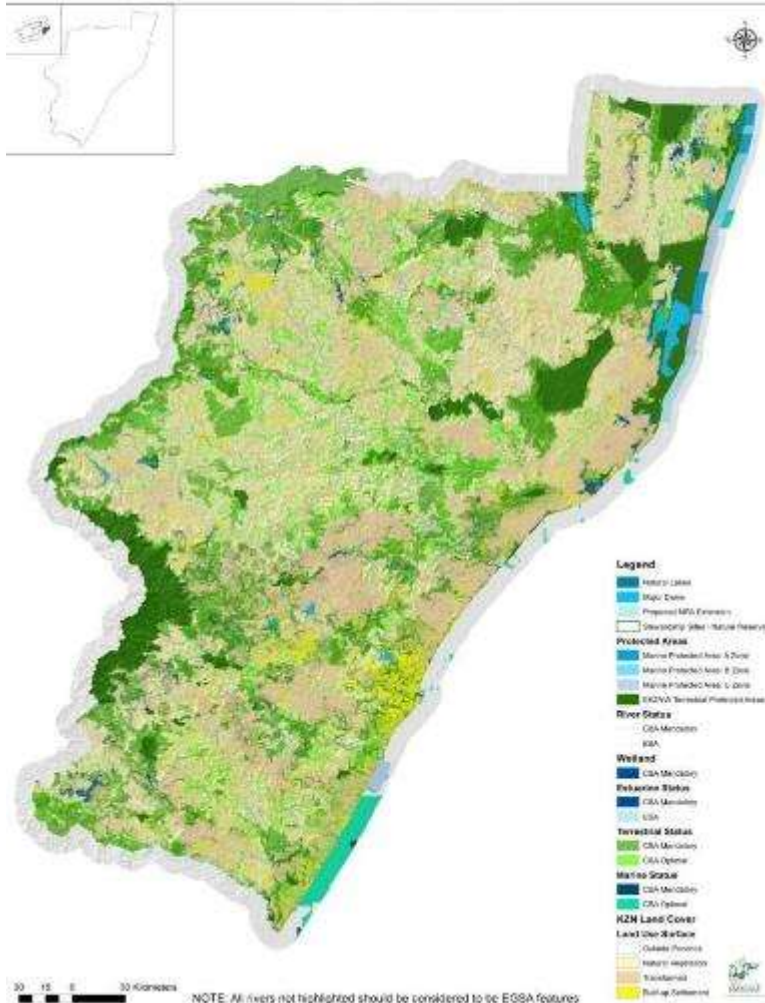




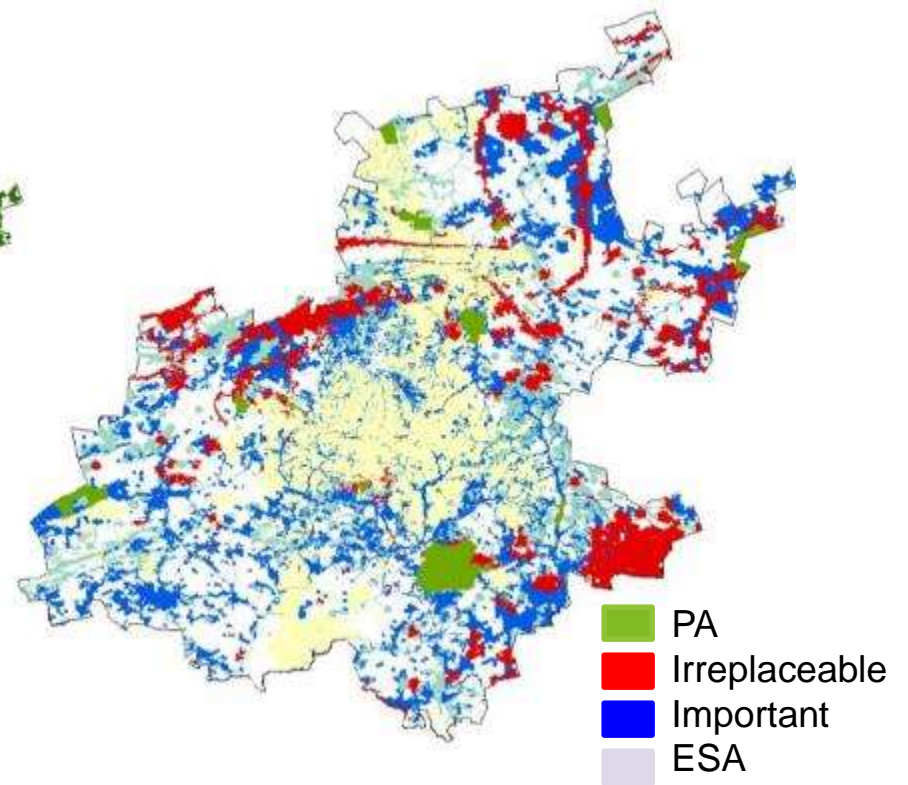
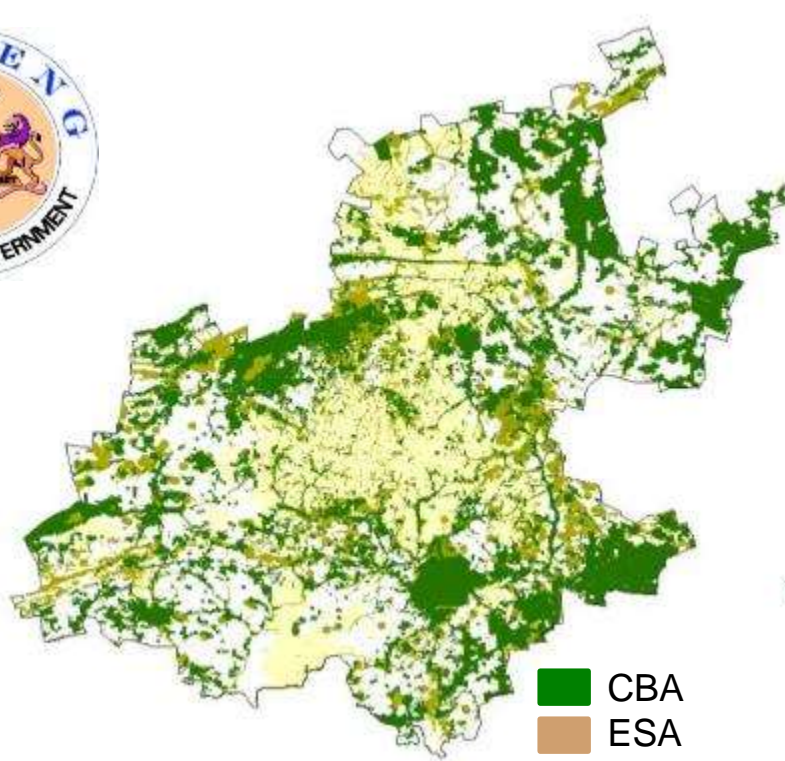
# KwaZulu-Natal

## CRITICAL BIODIVERSITY AND ECOLOGICAL SUPPORT AREAS MAP FOR KWAZULU-NATAL

Based on the KZN 2005 Land Cover V2.0



# Gauteng C-Plan vs 3



C-Plan Area	Hectares
Protected	43 513 (2.4%)
Irreplaceable and important	534 164 (29.4%)
Ecological Support Areas	251 473 (19.8%)
Not included	988 681 (54.4%)

# Eastern Cape

## Eastern Cape Biodiversity Sector Plan

# Free State

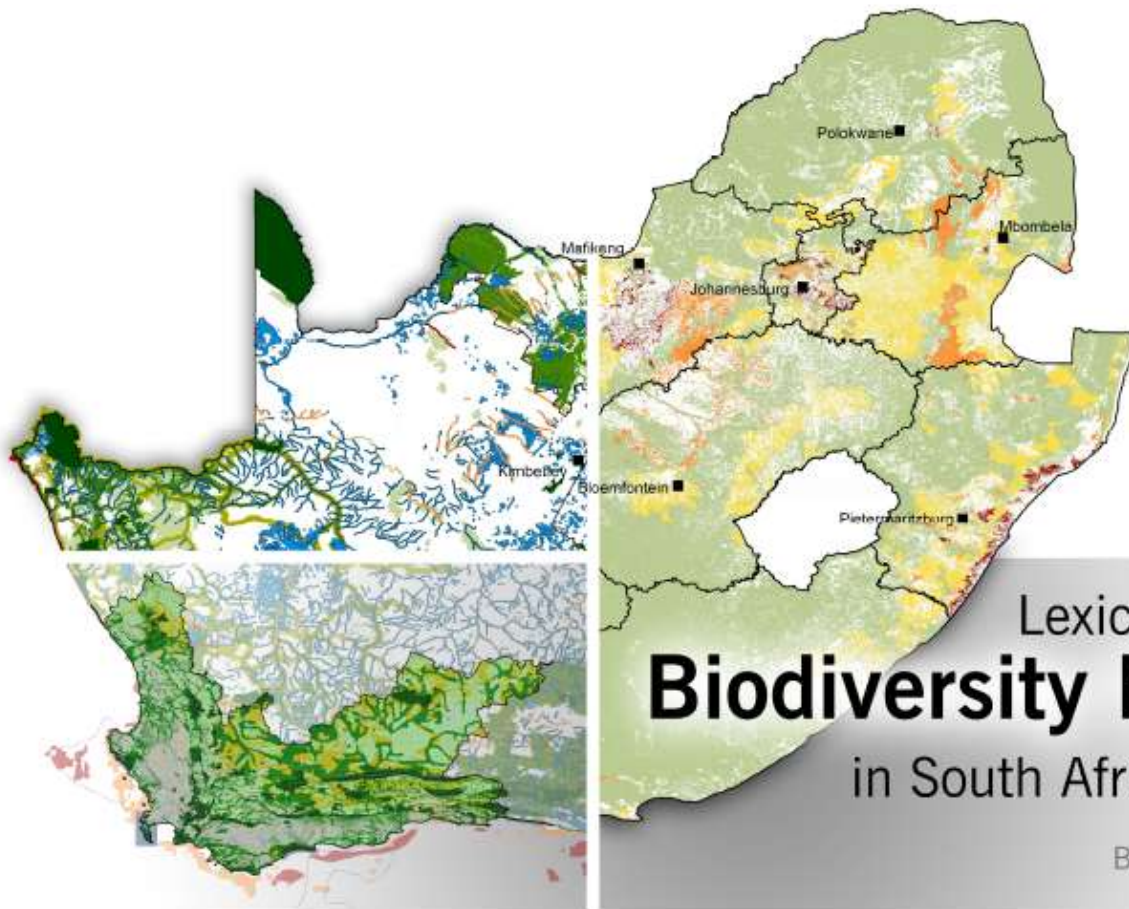
## Free State Biodiversity Plan

# Northern Cape

Northern Cape Critical  
Biodiversity Area Map

# Community of practice





Lexicon of  
**Biodiversity Planning**  
in South Africa

First Edition  
Beta Version (June 2016)

**SANBI**   
Biodiversity for Life  
South African National Biodiversity Institute

Available at <http://biodiversityadvisor.sanbi.org/planning-and-assessment/lexicon-of-biodiversity-planning-in-south-africa/>