



**Western Cape  
Government**

Environmental Affairs and  
Development Planning



**BETTER TOGETHER.**

# **WHEN ROLE-PLAYERS PLAY (NICELY) TOGETHER: CAN WE FACILITATE DEVELOPMENT AND MEET CONSERVATION TARGETS AT THE SAME TIME?**

**Biodiversity Planning Forum**

**Wilderness**

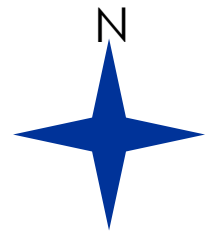
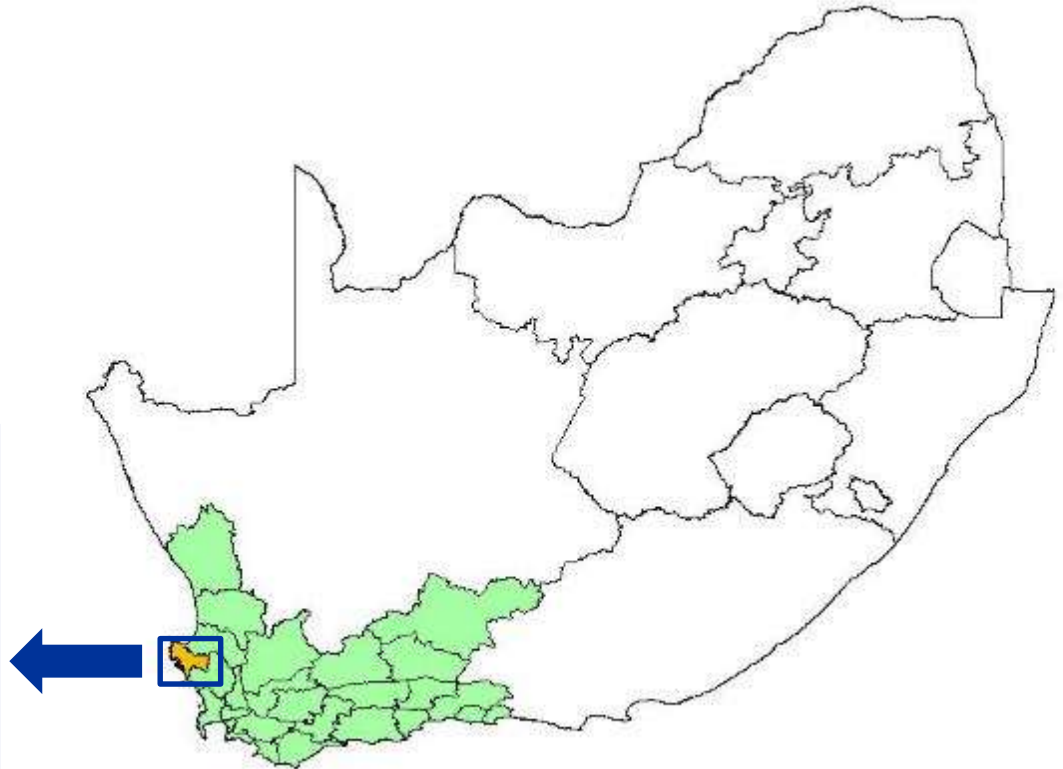
**May 2016**

**Alana Duffell-Canham, CapeNature**

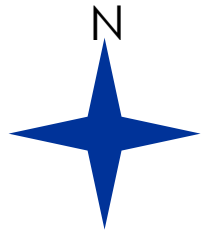
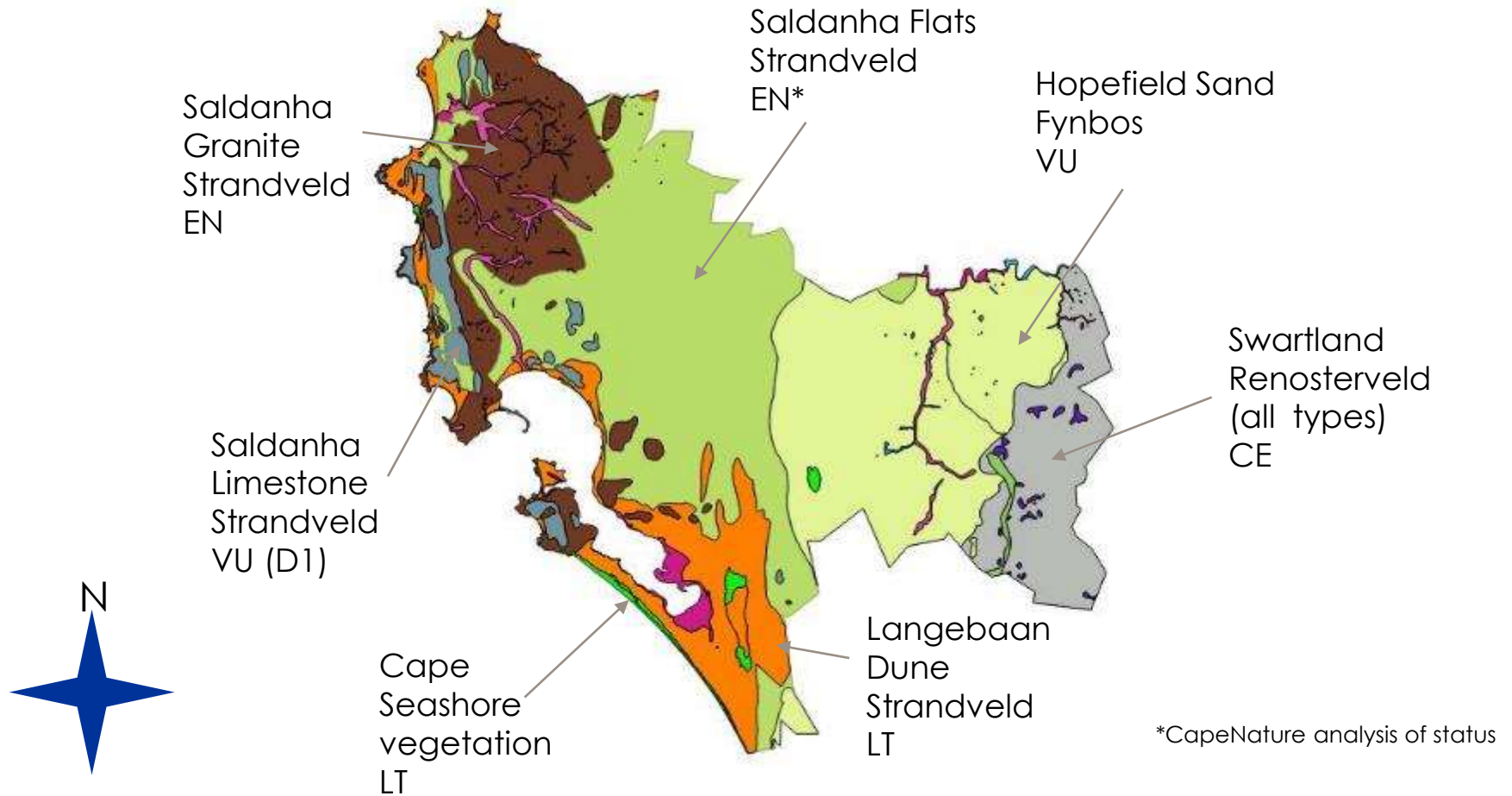
**Mellisa Naiker, Department of Environmental Affairs and  
Development Planning**

# The focus area

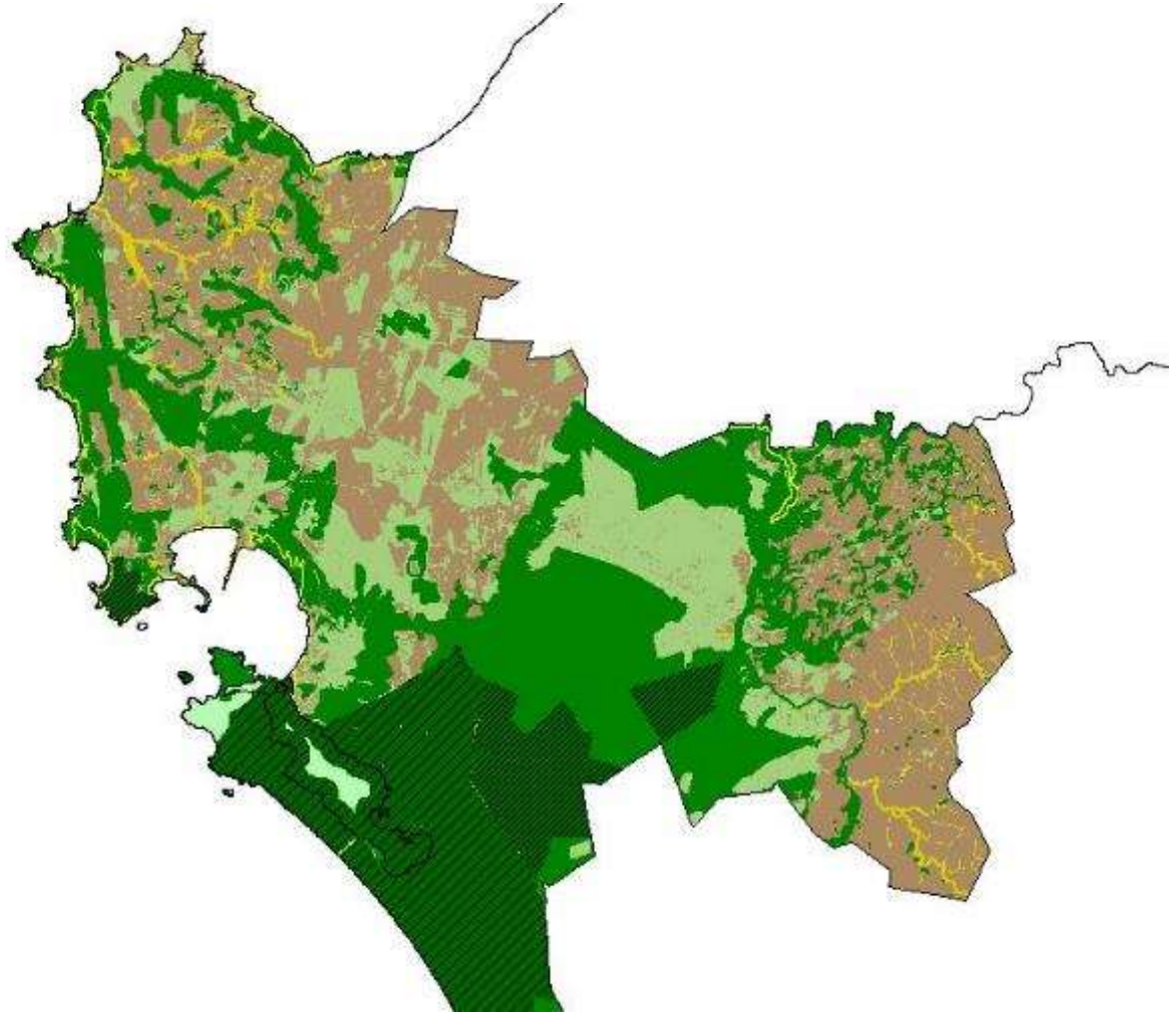
## Saldanha Municipality



## Main Vegetation types within Saldanha Municipality



## Critical Biodiversity Areas mapped for Saldanha Municipality 2010

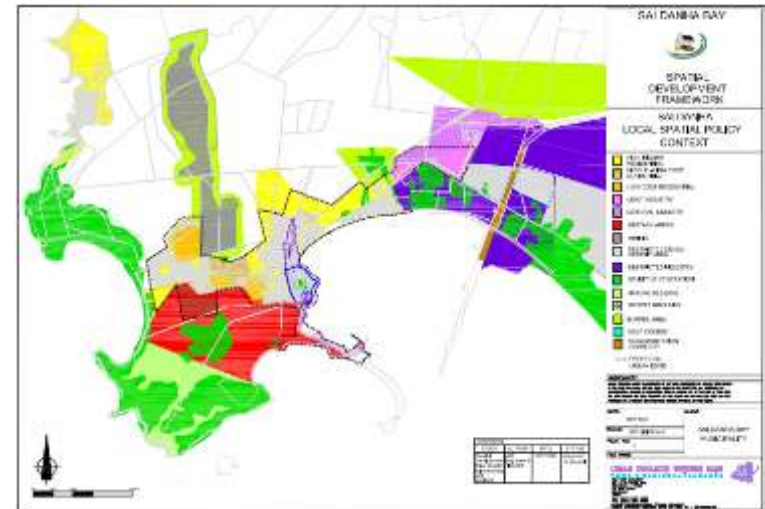
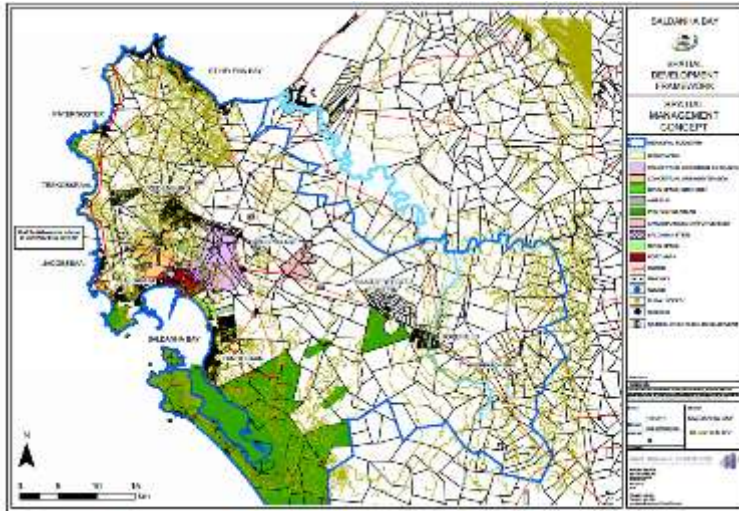


# Mainstreaming in Saldanha Municipality

## Input into:

### Saldanha Bay Strategic Development Framework 2011

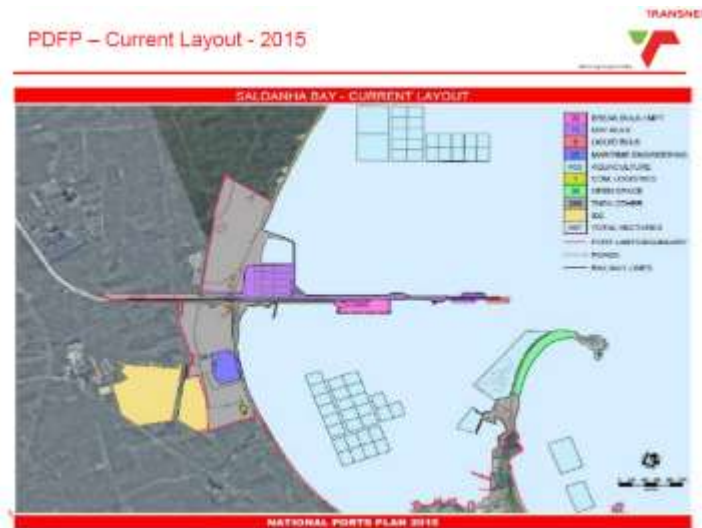
- Makes reference to CAPE fine-scale project
- CBAs strongly informed Conservation II areas and strategies for management



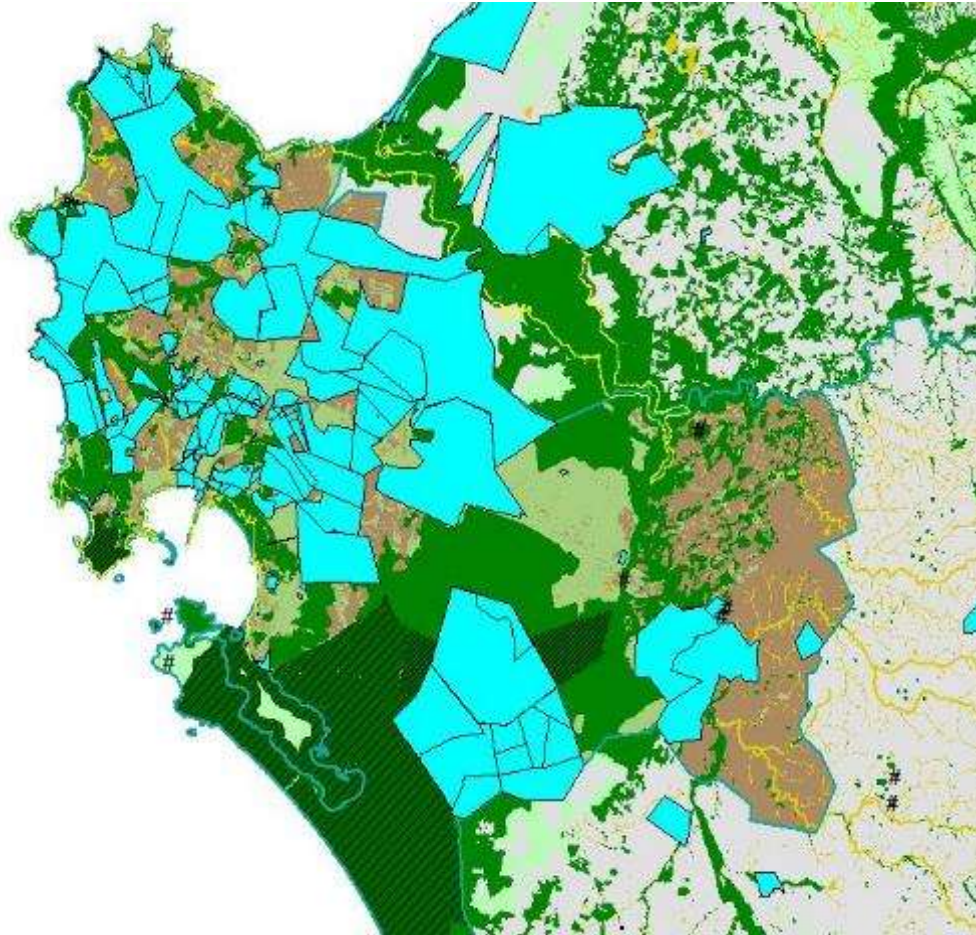
Input also into EMF and other policies and strategies

## *Saldanha is focus area for regional development*

- National, Provincial and Regional focal point for economic development initiatives
  - Operation Phakisa (oil and gas, mining, aquaculture, tourism)
  - Industrial Development Zone
  - Emerging regional industrial complex
  - SIPs (mainly 5 but also 8, 9 & 10)

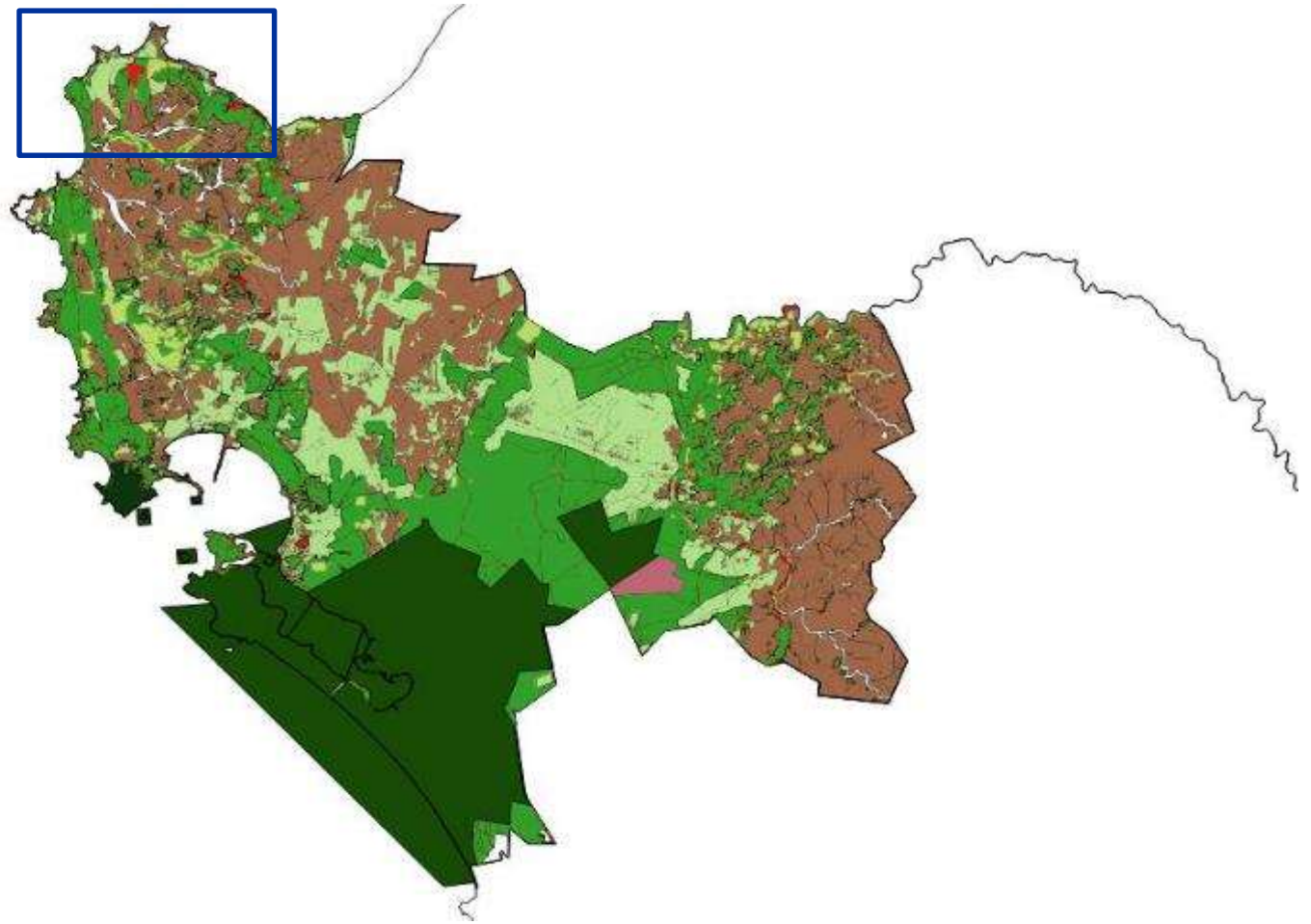


# Development Applications



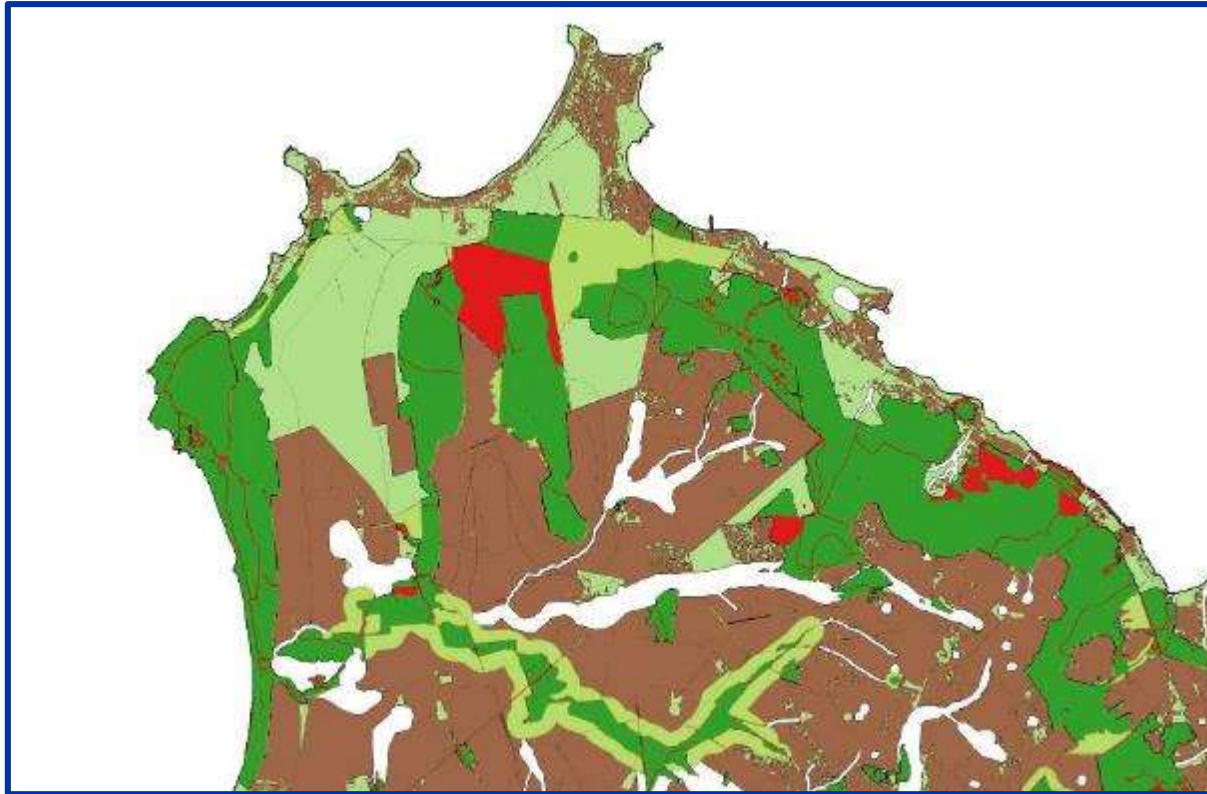
Light blue = farm portions with development applications (linear activities excluded)

## Critical Biodiversity Areas 2016





## Critical Biodiversity Areas 2016



Red areas = CBA lost

# Problem statement

---



- Individual government mandates
- Land use change not only issue
- Also need to consider impacts on other natural resources
- Overall deterioration of water quality
- Air quality also a huge issue

# Problem statement cont.

---



- **Growth expectations do not adequately consider the sustainable use of strategic natural resources within the limits of acceptable change**
- **Existing strategic planning frameworks for the area do not adequately assess and consider the limitations on natural resources**
- **This led to the establishment of the Saldanha Bay Intergovernmental Task Team**

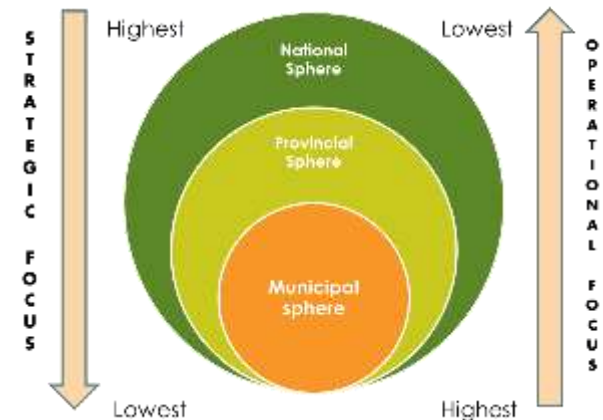
to be used

# The Saldanha Bay Intergovernmental Task Team (SBIGTT)

## Main Participants

- West Coast District Municipality and Saldanha Bay Municipality (including councillor rep)
- Dept. of Environmental Affairs & Development Planning components (Air Quality, Pollution, Biodiversity & Coastal, Spatial Planning, Climate Change, Policy)
- CapeNature
- Dept. Environmental Affairs (Strategic Infrastructure Development, Integrated Environmental Management, Oceans and Coasts)
- Dept. of Agriculture
- Dept. Agriculture Forestry & Fisheries
- Dept. Water and Sanitation
- Dept. Public Works
- Dept. of Rural Development & Land Reform
- Transnet
- Eskom

→ Aimed at high level management/director level



# The Saldanha Bay Intergovernmental Task Team (SBIGTT)

## *Main goals of SBIGTT:*

- To determine the spatial extent of all natural resources required for its continued existence and sustainable use
- To provide scientific information to inform limits

→ Ultimately need to provide clear recommendations on the policy or regulatory tools



# Moving forward...



## Options

### Land banking

Already being implemented in City of Cape Town for Atlantis Industrial Area

- Offset areas proactively secured outside urban edge
- Offset 1:1
- No botanical report required for development site Ledger kept to record all biodiversity offsets

### Challenges in Saldanha

- Most of land privately owned
- Budget - where will this come from?
- Need support at all levels of government
- Only applicable to terrestrial biodiversity
  - land only one aspect – air and water quality also needs to be considered

### Other Options??

---

Thank you