

National Biodiversity Information System

Biodiversity Planning Forum, Wilderness, June 2016

SANBI Mandate

*‘must collect, generate, process, **coordinate and disseminate information** about biodiversity and the sustainable use of indigenous biological resources, and **establish and maintain databases** in this regard’*

Free & open access to information

to enable research, assessment and monitoring;

to support policy development;

to foster collaboration and advance governance.

Biodiversity Data

[Access and Guidelines](#)

[Access to information](#)

[BRAHMS resources](#)

[How To Search on POSA](#)

[SABIF](#)

[Project funding](#)

[Standards & Protocols](#)

[SANBI's position](#)

[SeaKeys Project](#)

Biodiversity Data

Below is a list of SANBI's online information resources with a short description of each site.



Biodiversity GIS (BGIS)

BGIS makes spatial biodiversity information available for planning and decision making. The spatial information can be used online in an interactive map or downloaded from the website to be used locally.

[Visit BGIS](#)



South African Biodiversity Information Facility (SABIF)

SABIF is the South African node of the Global Biodiversity Information Facility (GBIF). SABIF promotes data sharing and builds capacity towards ensuring that biodiversity data makes a positive contribution to research.

[Visit SIBIS-SABIF](#)



iSpot southern Africa

Citizen scientists can capture images and share identifications, comments and knowledge through this unique portal.

[Visit iSpot](#)



Red List of South African plants

This is an online version of SANBI's Red List of South African plants.

[Visit the Red List](#)



Plants of southern Africa (POSA)

The Plants of southern Africa website provides plant nomenclature and floristic information for southern African taxa.

[Visit POSA](#)



Species Status Database

The Species Status Database provides a centralised storage location for information on the status of South African species.

[Visit the Species Status Database](#)

What you can access through SANBI

Information from

27+

Partners

14,000,000+

Plant and animal occurrence records (localities)

205,000+

citizen science observations (geotagged photos)

25,000+

Plant species records (detailed descriptions)

1150+

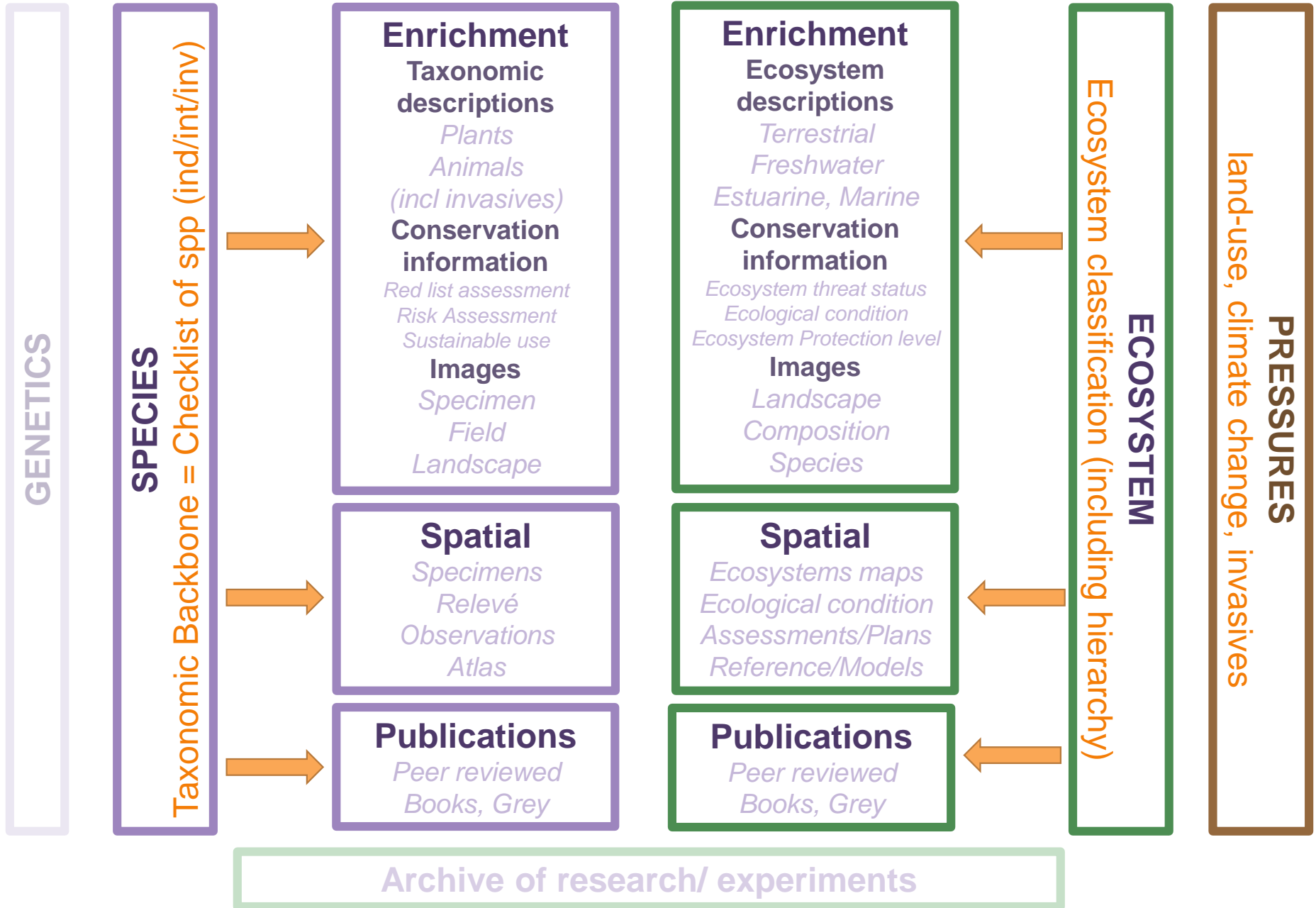
Animal species records (detailed descriptions)

400+

Biodiversity planning and ecosystem assessment
spatial layers



Conceptual information structure



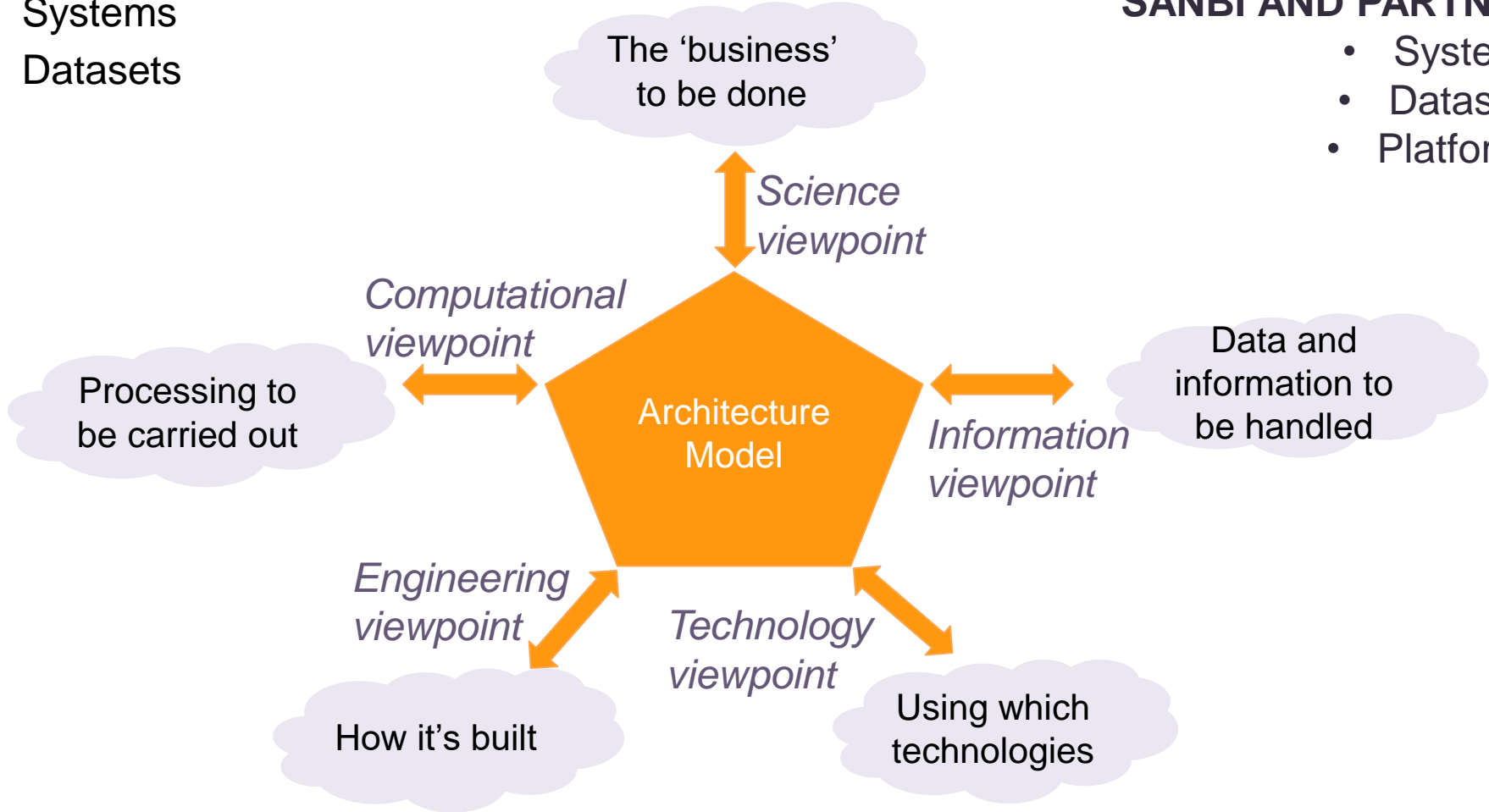
Leveraging the power of biodiversity information

INTEGRATION OF SANBI

- Systems
- Datasets

INTEROPERABILITY BETWEEN SANBI AND PARTNER

- Systems
- Datasets
- Platforms



Adapted from a picture by Z. Zhao, UvA

What do we mean by interoperability?

Search for spatial biodiversity information for South Africa

What threatened species are present in CBAs in Cape Winelands?

Select
Boundary

Select CBA

Intersect
with spp
distribution

Extract Thr
spp

Generate
list

Select
descriptive
fields

Package
report and
data

SANBI + 27 Data Partners + project contributors

Thank you

