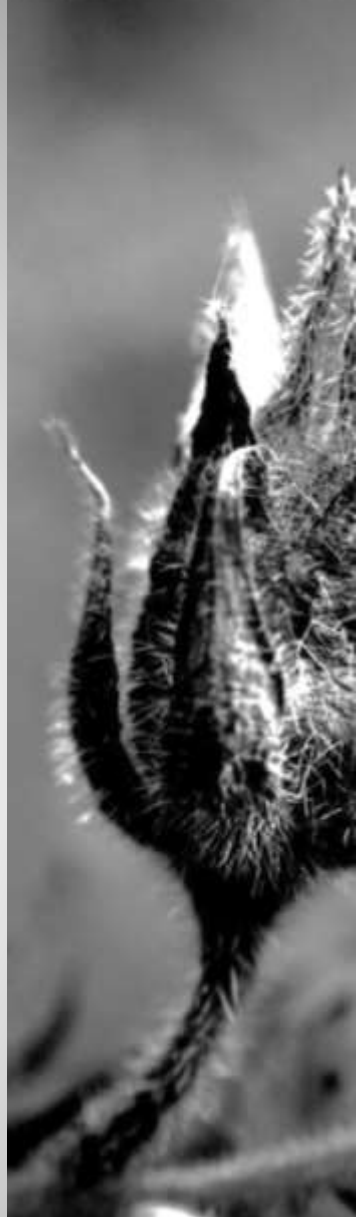


Towards the strategic management of invasive and alien plants within and adjacent to South Africa's National Parks



The key objectives

- 1) Base management on sound scientific and ecological principles
- 2) Transparency and Collaborative.
- 3) Be compliant to National and International regulation
- 4) Effective [strategic] adaptive management
- 5) Identify risks

Outcomes

- 1) Transparent and collaborative planning, implementation and reporting with effective feedback loops and learning
- 2) Impacts on biodiversity from IAP identified and mitigated
- 3) Legal compliance
- 4) Corporate integrity maintained
- 5) Integration between IAP management and Park Management Plans

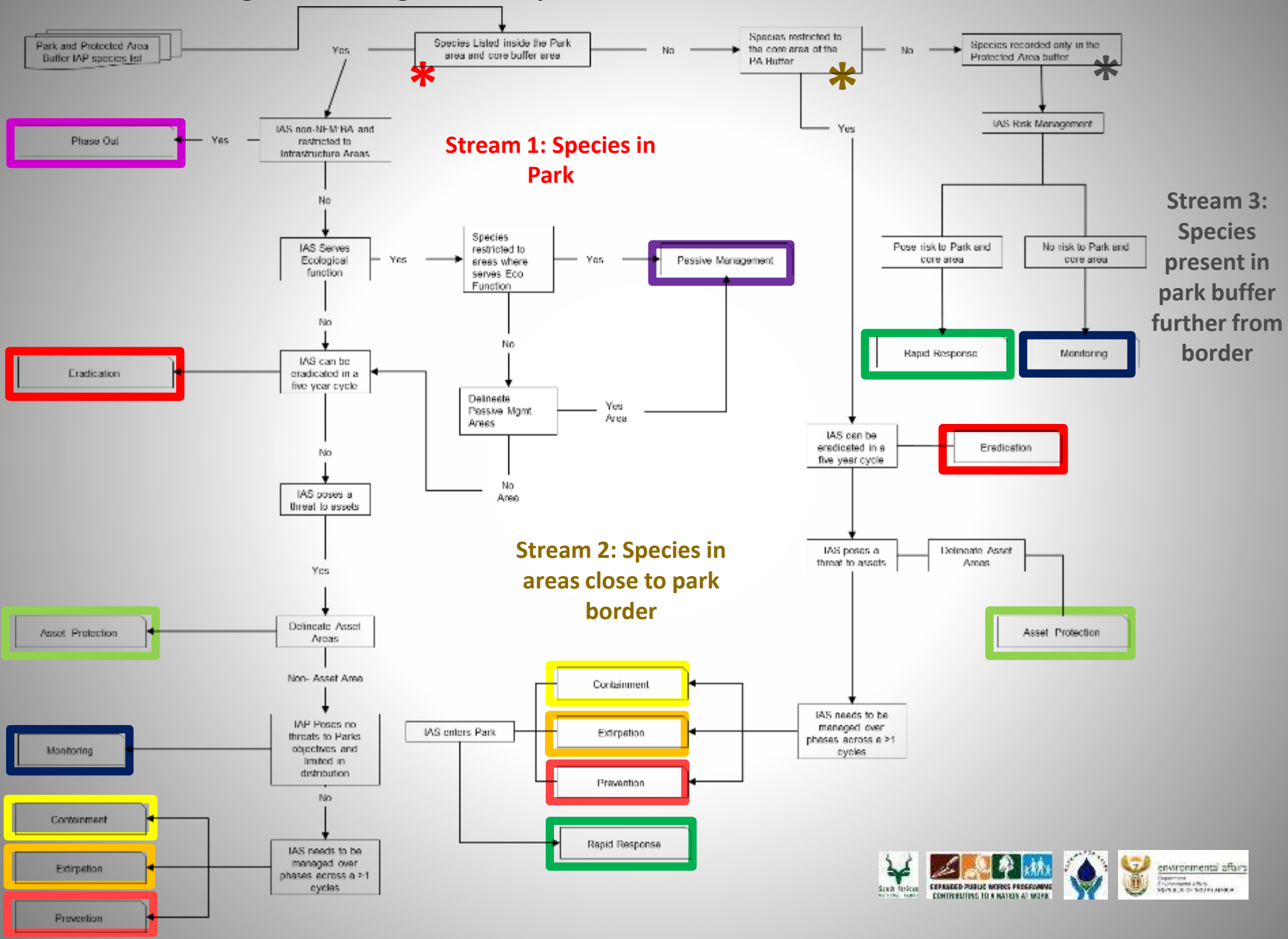
Regulatory environment

1. National Environmental Management Act (Act No. 107 of 1998) [NEMA].
 2. National Environmental Management: Protected Areas Act (Act No. 57 of 2003).
 3. National Environment Management: Biodiversity Act (Act No. 10 of 2004)
 4. Alien and Invasive Species Regulations, 2014 (Government Gazette No. 37885).
-
- Park Management Plans reviewed every ten years
 - Control Plans setting objectives for a five year period
 - Interim report and a final report for each cycle

Pros and cons of NEM:BA Regulations

1. Focus management on key issues
2. Regulation [polluter vs. polluted]
3. Standardization across organizations
4. Integrates into national assessment

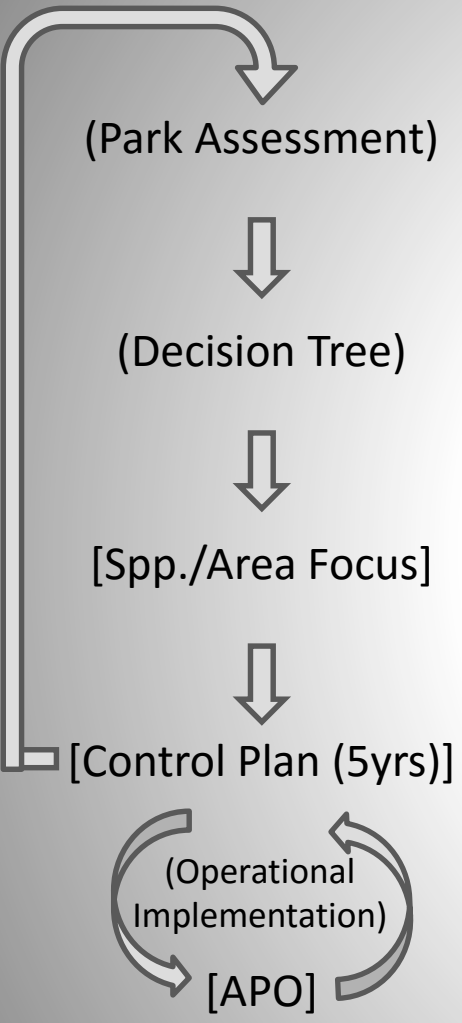
Decision tree to guide management objectives [NEM:BA]



Process being followed

SANParks Strategy for the Management of A&IP

Species specific strategy



STRATEGY
South African National Parks Strategy for the Management of Threats to Rare Flora

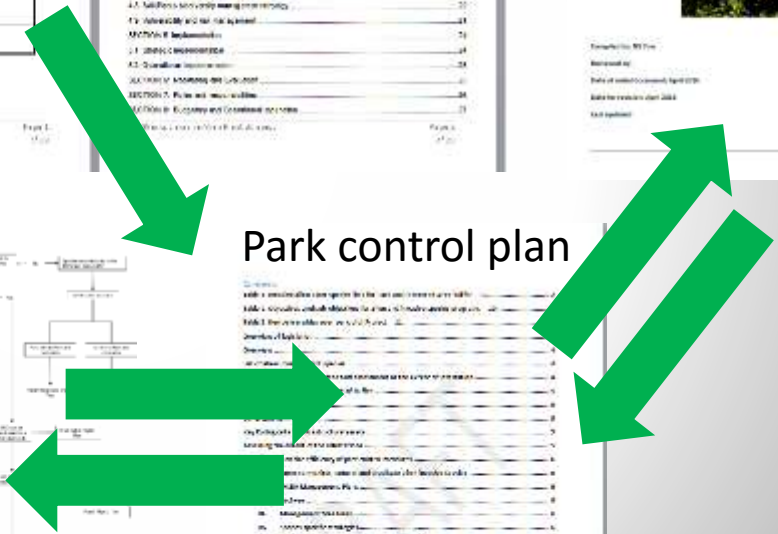
Section 1: Introduction
Section 2: Purpose and Objectives
Section 3: Policy and Procedures
Section 4: Strategic Objectives and Key Deliverables
Section 5: Policy and Procedures
Section 6: Species and Habitat Management
Section 7: Policy and Procedures
Section 8: Species and Habitat Management
Section 9: Policy and Procedures
Section 10: Species and Habitat Management

Species Management Plan for
Protea nana subsp. *nana*

Species: Protea nana
Date: 2010

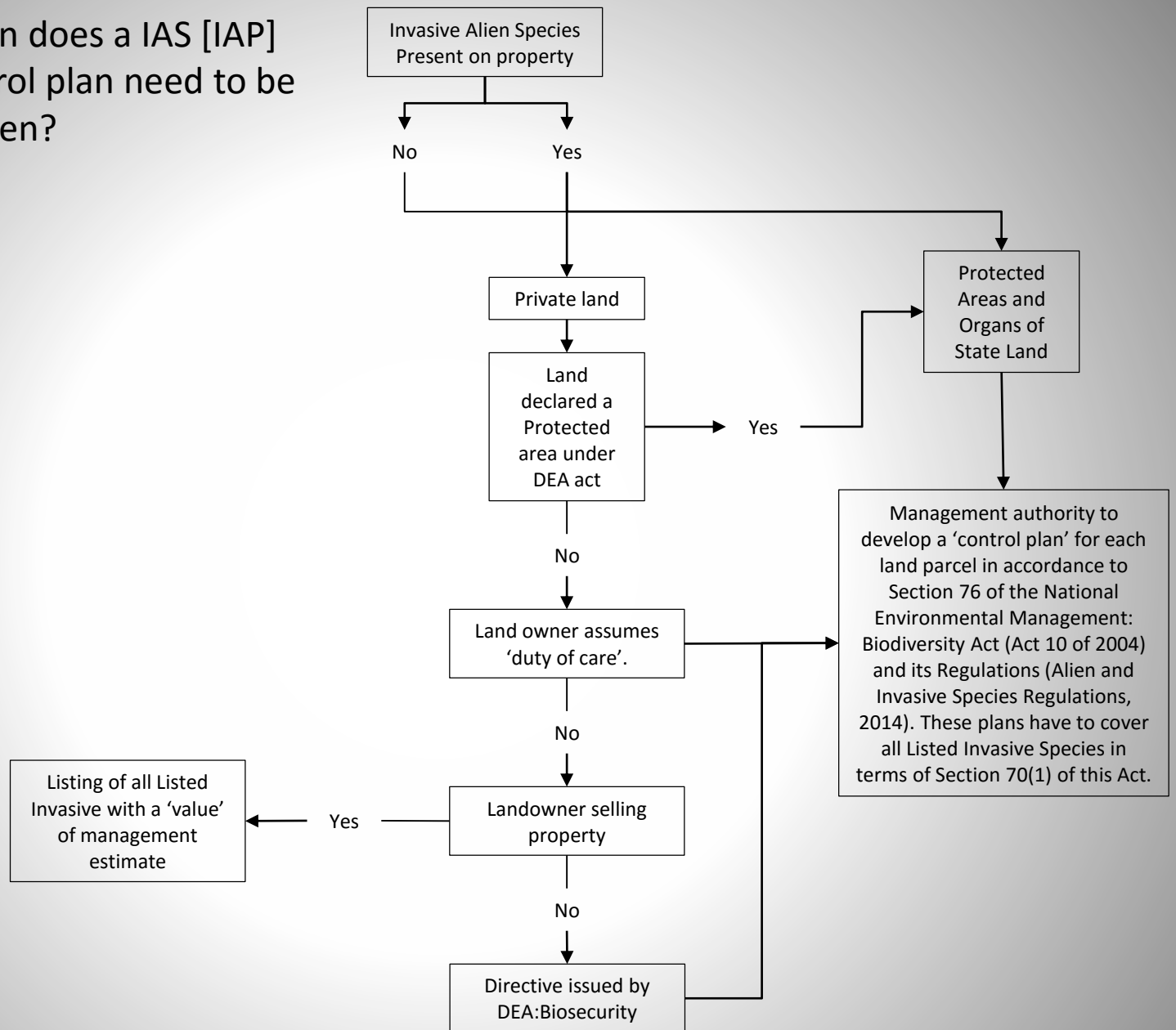
Park control plan

Protea nana
Management actions:
1. Monitor population levels
2. Control invasive species
3. Implement fire management
4. Conduct research
5. Engage stakeholders





When does a IAS [IAP]
control plan need to be
written?



Unpacking the 'Control' plan format – section and chapter heading

Introduction to the alien and invasive species management program

Overview -This section complies to 3.1 of the NEM:BA guidelines document

List of alien invasive plant species

This section complies with 3.2 of the NEM:BA guideline document

Description of the land infested and assessment of the extent of infestation

(NEM:BA compliance 76 (4)b) & (NEM:BA compliance 76 (4)c)

Description of the land infested and assessment of the extent of infestation

Protected Area buffer and core zone

Ecological priority areas

Other Zoning

Key Ecological and Infrastructural assets

The above sections complies to what the NEM:BA guideline document requires in section 3.3

Assessing the extent of the infestations This section complies with 3.4 of the NEM:BA guideline document

Status report on the efficiency of past control measures

(NEM:BA compliance 76 (4)d)

This section complies with 3.5 of the NEM:BA guideline document



Unpacking the 'Control' plan format

Assessing the extent of the infestations *This section complies with 3.4 of the NEM:BA guideline document*

Current measures to monitor, control and eradicate alien invasive species
(NEM:BA compliance 76 (4)e)

Species Management Plan

Objectives

Management Measures

Species specific strategies

Monitoring strategy per species_ management plan

This section complies with 3.6 of the NEM:BA guideline document

Target and timelines for the control plan

This section complies with 3.7 of the NEM:BA guideline document

Methods to be employed in the control of IAP species

This section complies with the NEM:BA guideline document

Indicators of progress and success

This section complies with 3.7 of the NEM:BA guideline document

Risk modelling and dependency on funding

This section is a requirement of SANParks LLP:IAP and not a direct NEM:BA requirement



**Thank
you**



environmental affairs
Department
Environmental Affairs
REPUBLIC OF SOUTH AFRICA

